

WAAS
CH **82519**
W05A

APP CRS
054°

Rwy Idg
TDZE **31**
Apt Elev **31**

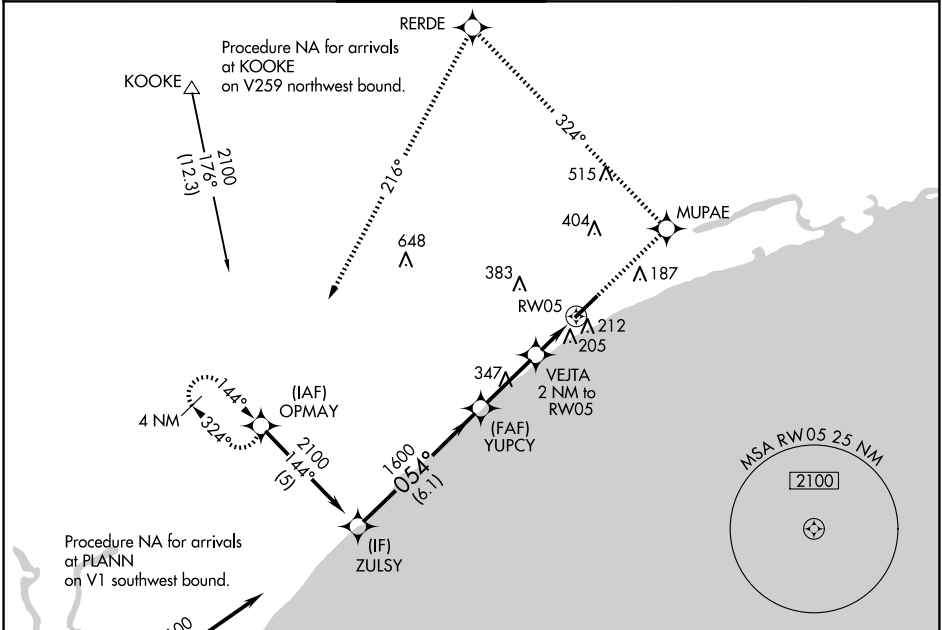
RNAV (GPS) RWY 5

GRAND STRAND (CRE)

▼ For uncompensated Baro-VNAV systems, LNAV/VNAV NA below -15°C (5°F) or above 48°C (118°F). DME/DME RNP-0.3 NA. Visibility reduction by helicopters NA. When local altimeter setting not received use Myrtle Beach Intl altimeter setting and increase all DA 31 feet and all MDA 40 feet. VDP and Baro-VNAV NA with Myrtle Beach Intl altimeter setting.

MISSED APPROACH: Climb to 2100 direct MUPAE and left turn on track 324° to RERDE and left turn on track 216° to OPMAY and hold.

ATIS 119.625	MYRTLE BEACH APP CON★ 119.2 350.3	STRAND TOWER★ 124.6 (CTAF) 0 257.6	GND CON 121.8 257.6	CLNC DEL 121.8	UNICOM 122.95
------------------------	---	--	-------------------------------	--------------------------	-------------------------



ZULSY

2100

Procedure Turn NA

GP 3.00° TCH 40

YUPCY

2100

1600

*700

VEJTA

2100

2 NM to RW05

*.2 NM to RW05

RERDE

2100

324°

*LNAV only.

OPMAY

2100

324°

6.1 NM

2.7 NM

0.8

1.2

CATEGORY	A	B	C	D
LPV DA	281-1 250 (300-1)			
LNAV/VNAV DA	496-1¾ 465 (500-1¾)			
LNAV MDA	460-1 429 (500-1)	460-1½ 429 (500-1½)	460-1½ 429 (500-1½)	460-1½ 429 (500-1½)
CIRCLING	520-1 489 (500-1)	720-2 689 (700-2)	720-2 689 (700-2)	720-2 689 (700-2)

REIL Rwy 5 0

HIRL Rwy 5-23 0

ELEV 31

TDZE 31

054° to RW05

597 X 100

TWR 107

110

NORTH MYRTLE BEACH, SOUTH CAROLINA

Orig-A 20MAY21

33°49'N-78°43'W

GRAND STRAND (CRE)

RNAV (GPS) RWY 5