

WAAS
CH 42819
W23A

APP CRS
234°

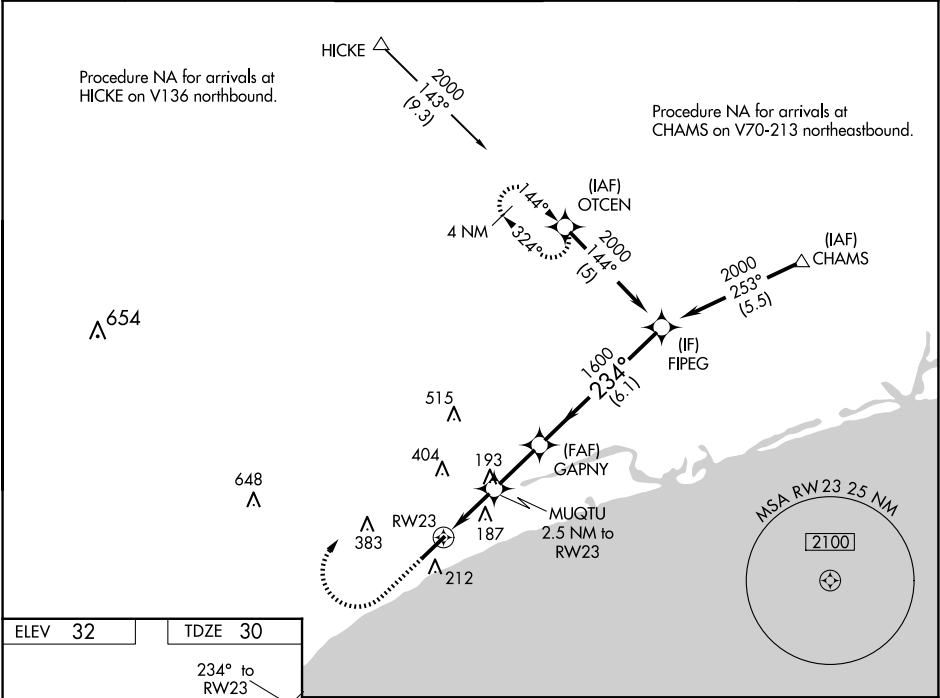
Rwy Idg
TDZE
Apt Elev

5997
30
32

RNAV (GPS) RWY 23

GRAND STRAND (CRE)

RNP APCH-GPS.			MALSR		MISSED APPROACH: Climb to 1000 then climbing right turn to 2000 direct OTCEN and hold.
<div><div>▼</div><div>▲</div></div> Rwy 23 helicopter visibility reduction below ¾ SM NA. For uncompensated Baro-VNAV systems, LNAV/VNAV NA below -7°C or above 54°C. For inop ALS, increase LNAV/VNAV all Cats visibility to 1½ SM; increase LNAV Cats A/B visibility to 1 SM.					
ATIS 119.625	MYRTLE BEACH APP CON* 119.2 350.3	STRAND TOWER* 124.6 (CTAF) 0 257.6	GND CON 121.8 257.6	CLNC DEL 121.8	UNICOM 122.95



ELEV 32

TDZE 30

234° to RW23

5997 X 100

TWR 107

110

1000	2000	OTCEN	FIPEG	
RW23		MUQTU 2.5 NM to RW23	GAPNY 1600	2000
1.3 NM		1.2 NM	2.3 NM	6.1 NM
CATEGORY	A	B	C	D
LPV DA	230-½		200 (200-½)	
LNAV/VNAV DA	412-¾		382 (400-¾)	
LNAV MDA	480-¾	450 (500-¾)	480-⅞	450 (500-⅞)
CIRCLING	520-1	488 (500-1)	720-2 688 (700-2)	720-2¼ 688 (700-2¼)

REIL Rwy 5 0

HIRL Rwy 5-23 0