

VOR FXU 108.4	APCH CRS 158°	Rwy ldg TDZE Arpt Elev 3913 328 330
-------------------------	-------------------------	---

[USA]

VOR RWY 16

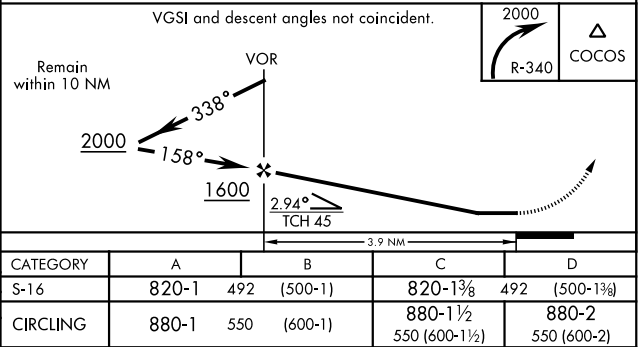
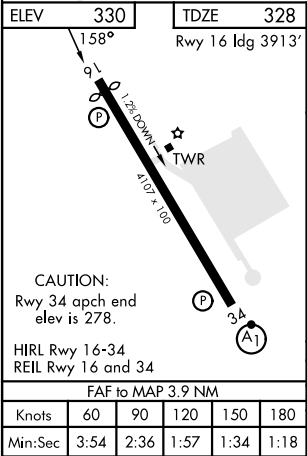
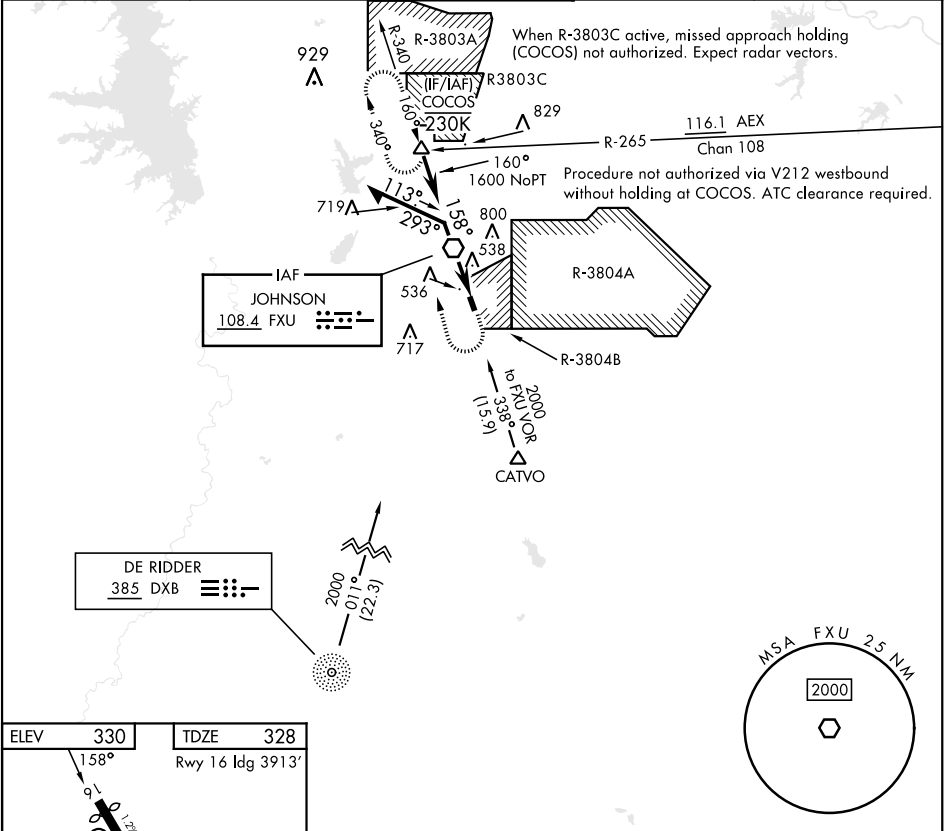
MAKS AAF (KPOE)

RADAR required for arrivals at DXB NDB and CATVO.

Helicopter visibility reduction below ¾ miles NA.

MISSED APPROACH: Climbing right turn to 2000 on FXU
VOR R-340 to COCOS int and hold.

ATIS 134.85 282.2	APP CON 123.7 261.3	TOWER★ 119.0(CTAF) 257.75	GND CON 121.8 239.25	ASR/PAR
-----------------------------	-------------------------------	-------------------------------------	--------------------------------	---------



VOR RWY 16

SC-4, 07 AUG 2025 to 04 SEP 2025

SC-4, 07 AUG 2025 to 04 SEP 2025