

RNAV (GPS) RWY 34

WAAS CH 88848 W34A	APCH CRS 338°	Rwy Idg 4107 TDZE 321 Arpt Elev 330
--	-------------------------	--

[USA]

MAKS AAF (KPOE)

RNP APCH - GPS

RADAR required for arrivals at CATVO.

T * When ALS inop, increase vis to 1 mile.

▼ ** When ALS inop, increase vis to 7/8 mile.

*** When ALS inop, increase CAT AB vis to 1 mile, CAT CD vis to 1 1/4 miles

When control tower is closed, increase vis to 1 mile.

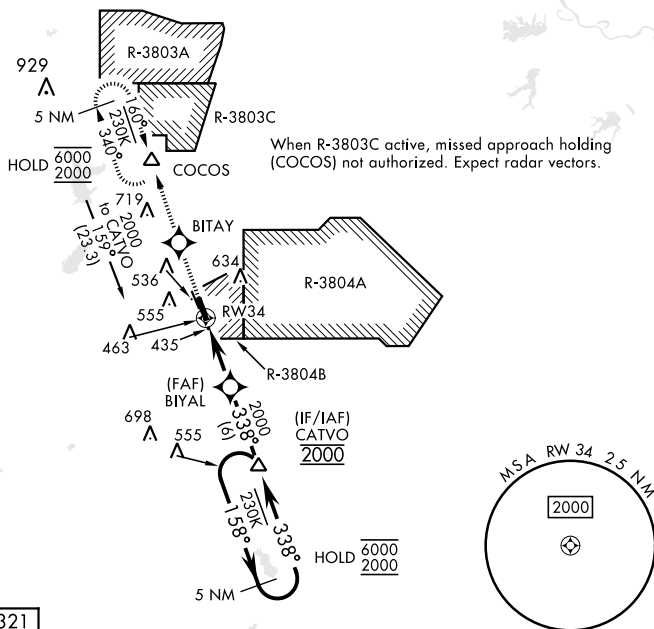


MISSED APPROACH: Climb to 2000 direct BITAY and on track 340° to COCOS and hold.

ATIS 134.85 282.2	APP CON 123.7 261.3	TOWER ★ 119.0 (CTAF) 257.75	GND CON 121.8 239.25	ASR/PAR
-----------------------------	-------------------------------	---------------------------------------	--------------------------------	---------

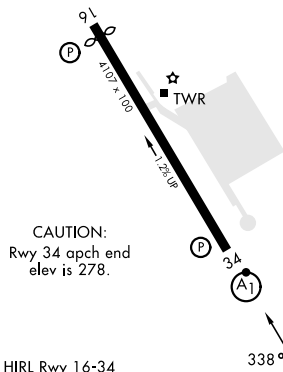
Rwy 34 helicopter visibility reduction below $\frac{3}{4}$ mile not authorized.

For uncompensated Baro-VNAV systems, LNAV/VNAV not authorized below -15°C or above 54°C.



ELEV	330		TDZE	321
------	-----	--	------	-----

Rwy 16 Idg 3913'



HIRL Rwy 16-34
REIL Rwy 16 and 34

CATEGORY	A	B	C	D
LPV DA *	668- $\frac{3}{4}$ 347 (400- $\frac{3}{4}$)			
LNNAV/VNAV DA**	594- $\frac{3}{4}$ 273 (300- $\frac{3}{4}$)	605- $\frac{3}{4}$ 284 (300- $\frac{3}{4}$)	613- $\frac{3}{4}$ 292 (300- $\frac{3}{4}$)	624- $\frac{3}{4}$ 303 (300- $\frac{3}{4}$)
LNNAV MDA ***	760- $\frac{3}{4}$ 439 (500- $\frac{3}{4}$)			
C CIRCLING	880-1 550 (600-1)	880-1 $\frac{1}{2}$ 550 (600-1 $\frac{1}{2}$)	940-2 610 (700-2)	

FORT JOHNSON, LOUISIANA

31° 03' N-93° 11' W

MAKS AAF (KPOE)

Amdt 3 15MAY25

RNAV (GPS) RWY 34

SC-4, 07 AUG 2025 to 04 SEP 2025