

APP CRS
213°

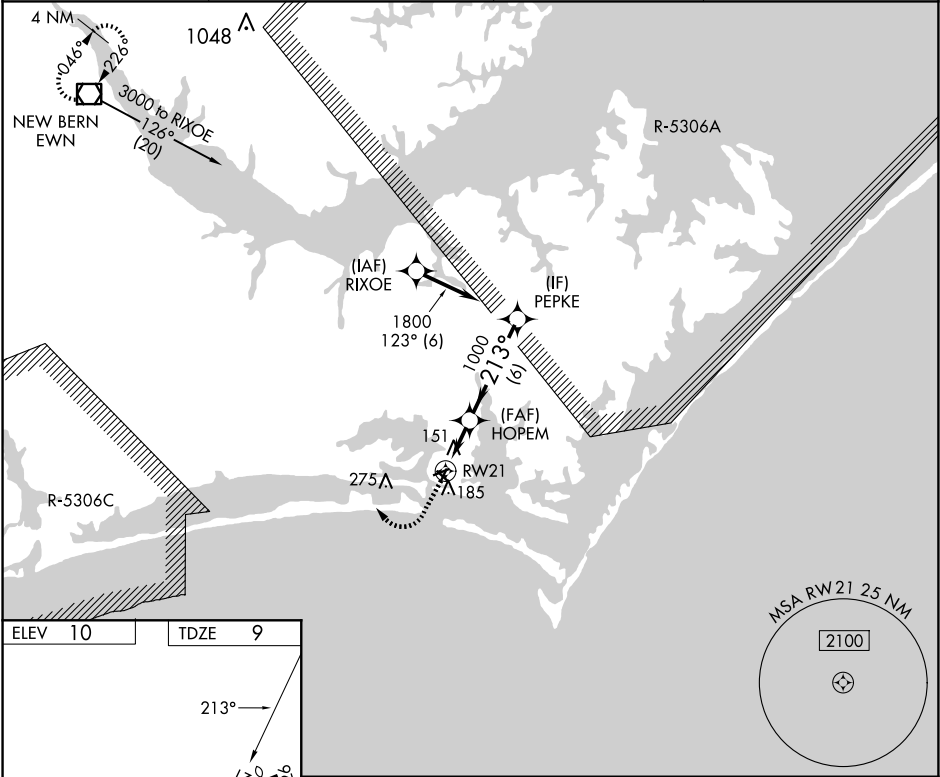
Rwy Idg
TDZE
Apt Elev

3676
9
10

RNAV (GPS) RWY 21

MICHAEL J SMITH FLD (MRH)

RNP APCH - GPS.			MISSED APPROACH: Climb to 500 then climbing right turn to 3000 direct EWN VOR/DME and hold.
<div><div><div></div><div></div></div><div>Circling Rwy 8, 14, 32 NA at night. Rwy 21 helicopter visibility reduction below ¾ SM NA. ATC clearance required to penetrate R-5306A and R-5306C.</div></div>			
ASOS 135.375	CHERRY POINT APP CON 132.575 299.6	CLNC DEL 125.65	UNICOM 122.8 (CTAF) 0



ELEV 10

TDZE 9

213°

5004 X 100

4001 X 100

4192 X 130

3

8

26

32

500

3000

EWN

VGSI and descent angles not coincident
(VGSI Angle 4.00/TCH 54).

PEPKE

HOPEM

0.8 NM to RW21

3.00°

TCH 40

1000

1800

213°

0.8

2.2 NM

6 NM

CATEGORY	A	B	C	D
LNAV MDA	420-1	411 (500-1)	NA	
CIRCLING	540-1	530 (600-1)	NA	

REIL Rwy 8 and 26

MIRL Rwy 3-21 and 8-26