

## DEPARTURE ROUTE DESCRIPTION

**TAKEOFF ALL RUNWAYS:** Fly assigned heading and altitude for RADAR vectors to MSP VOR/DME then on MSP R-138 to cross JEDET INT/MSP 34 DME, at or above 4000; then on ODI R-301 to ZMBRO INT/ODI 50 DME, thence . . .

...on assigned transition or route. Expect clearance to  
filed altitude/flight level 10 (ten) minutes after departure.

NODINE TRANSITION (ZMBRO7.ODI): From over ZMBRO  
on ODI R-301 to ODI VORTAC.

NOTE: Chart not to scale.

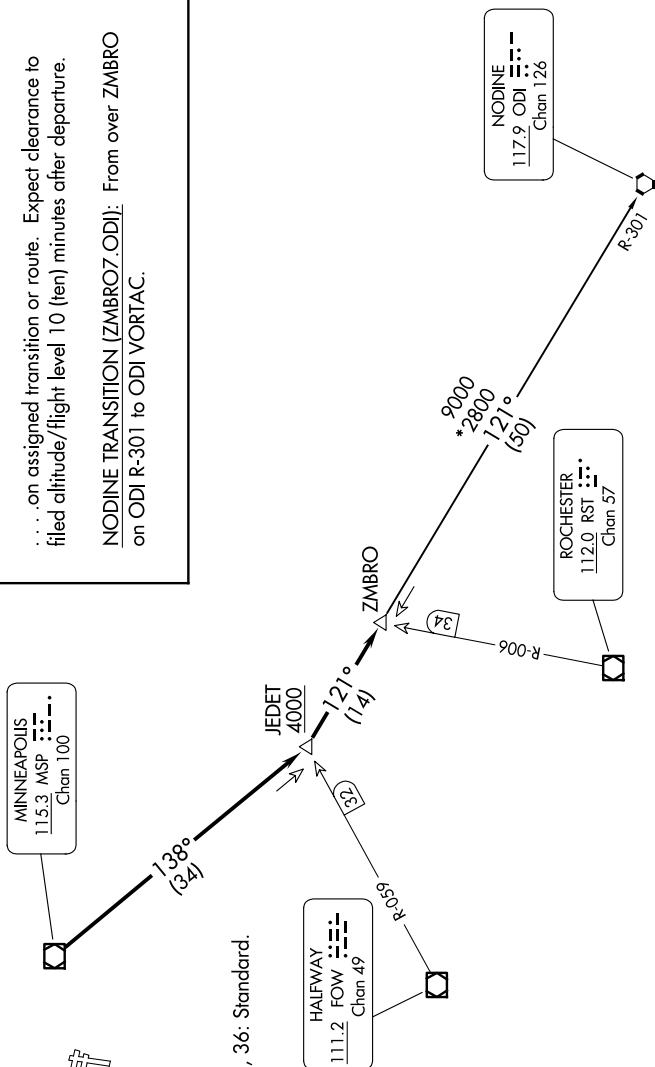
NOTE: Chart not to scale.

**TOP ALTITUDE:**  
(JETS) 7000/  
(PROPS) 5000

MINNEAPOLIS DEP CON  
134.7 284.7  
ATIS  
124.9  
MINNEAPOLIS CLNC DEL  
121.7 (when tower closed)  
FLYING CLOUD TOWER★  
119.15

## TAKEOFF MINIMUMS

Rwys 10L/R, 18, 28L/R, 36: Standard.



7 

ZMBRO SEVEN DEPARTURE  
(ZMBRO7.ZMBRO) 17AUG17

MINNEAPOLIS, MINNESOTA  
FLYING CLOUD (FCM)