

TOP ALTITUDE:
(JETS) 7000/
(PROPS) 5000

TAKEOFF MINIMUMS

Rwys 10L/R, 18, 28L/R, 36: Standard.

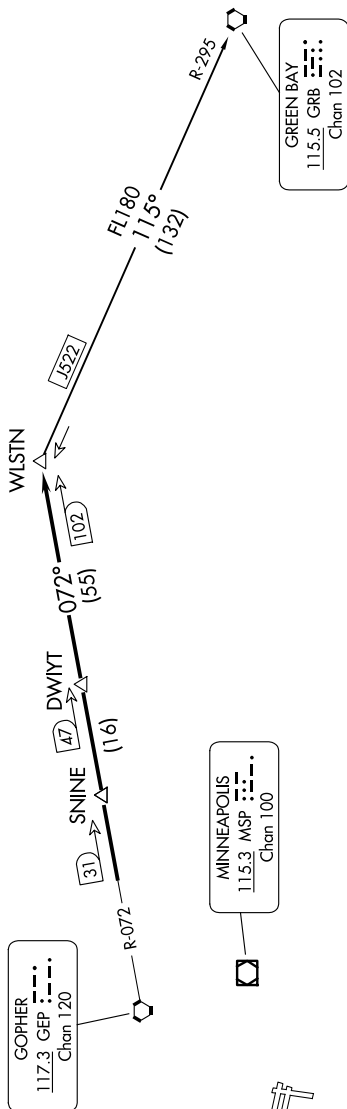
MINNEAPOLIS DEP CON
134.7 335.65

124.9

MINNEAPOLIS CLNC DEL
121.7 (when tower closed)

FLYING CLOUD TOWER ★

1119.15



NOTE: RADAR required.

DEPARTURE ROUTE DESCRIPTION

TAKEOFF ALL RUNWAYS: Fly assigned heading and altitude for RADAR vectors to GEP R-072 to WLSTN/GEP 102 DME. Thence

...on assigned transition or assigned route. Expect clearance to filed altitude/flight level 10 (ten) minutes after departure.

GREEN BAY TRANSITION (WLSTN7.GRB): From over WLSTN on GRB R-295 to GRB VORTAC.

WLSTN SEVEN DEPARTURE

(WLSTN7.WLSTN) 17AUG17

MINNEAPOLIS, MINNESOTA

FLYING CLOUD (FCM)