

| | | | |
|--|------------------------|-----------------------------|---|
| VOR/DME FCM 117.7 Chan 124 | APP CRS 100° | Rwy Idg TDZE Apt Elev | 5001 906 906 |
|--|------------------------|-----------------------------|---|

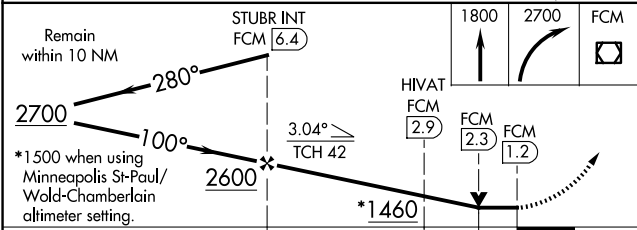
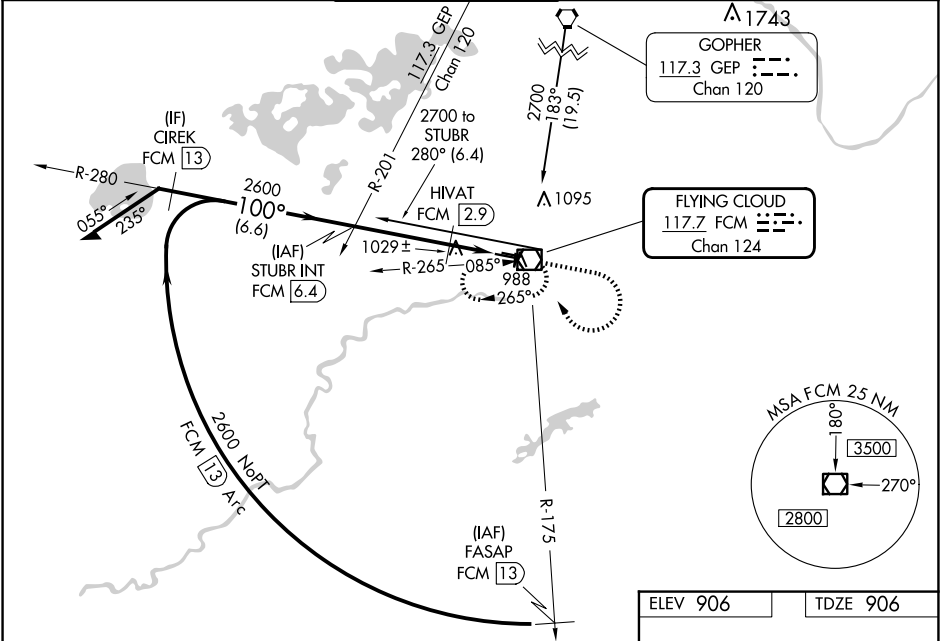
VOR RWY 10R
FLYING CLOUD (FCM)

⚠ When local altimeter setting not received, use Minneapolis St-Paul/Wold-Chamberlain altimeter setting and increase all MDA 40 feet, HIVAT fix minimums: Increase S-10R Cat C visibility ¼ mile. For inoperative MALSR, HIVAT fix minimums: Increase S-10R Cat D visibility to 1¼ mile. VDP NA when using Minneapolis St-Paul/Wold-Chamberlain altimeter setting. When Circling to Rwy 18, 36 at night, operational VGSI required, remain on or above VGSI glidepath until threshold.

MALSR

MISSED APPROACH: Climb to 1800 then climbing right turn to 2700 direct FCM VOR/DME and hold, continue climb-in-hold to 2700.

| | | | | | |
|----------------------|---|--|-------------------------|---|-------------------------|
| ATIS 124.9 | MINNEAPOLIS APP CON 134.7 284.7 | FLYING CLOUD TOWER ★ 119.15 (CTAF) | GND CON 121.7 | CLNC DEL 121.7 (When twr closed) | UNICOM 122.95 |
|----------------------|---|--|-------------------------|---|-------------------------|



| CATEGORY | A | B | C | D |
|-----------------------------------|--------------------|--------------------|----------------------|----------------------|
| S-10R | 1460-½ 554 (600-½) | | 1460-1 554 (600-1) | 1460-1¼ 554 (600-1¼) |
| CIRCLING | 1460-1 554 (600-1) | | 1460-1½ 554 (600-1½) | 1540-2 634 (700-2) |
| HIVAT FIX MINIMUMS (DME REQUIRED) | | | | |
| S-10R | 1280-½ 374 (400-½) | | | 1280-1 374 (400-1) |
| CIRCLING | 1320-1 414 (500-1) | 1440-1 534 (600-1) | 1440-1½ 534 (600-1½) | 1540-2 634 (700-2) |

ELEV 906 TDZE 906

HIRL Rwy 10R-28L
REIL Rwys 10L and 28R
REIL Rwys 18, 28L, and 36
MIRL Rwy 10L-28R
MIRL Rwy 18-36

FAF to MAP 5.2 NM

| | | | | | |
|---------|------|------|------|------|------|
| Knots | 60 | 90 | 120 | 150 | 180 |
| Min:Sec | 5:12 | 3:28 | 2:36 | 2:05 | 1:44 |