

MINNEAPOLIS, MINNESOTA

AL-5094 (FAA)

24081

WAAS CH 90218 W28B	APP CRS 278°	Rwy Idg 5001 TDZE 906 Apt Elev 906
--	------------------------	---

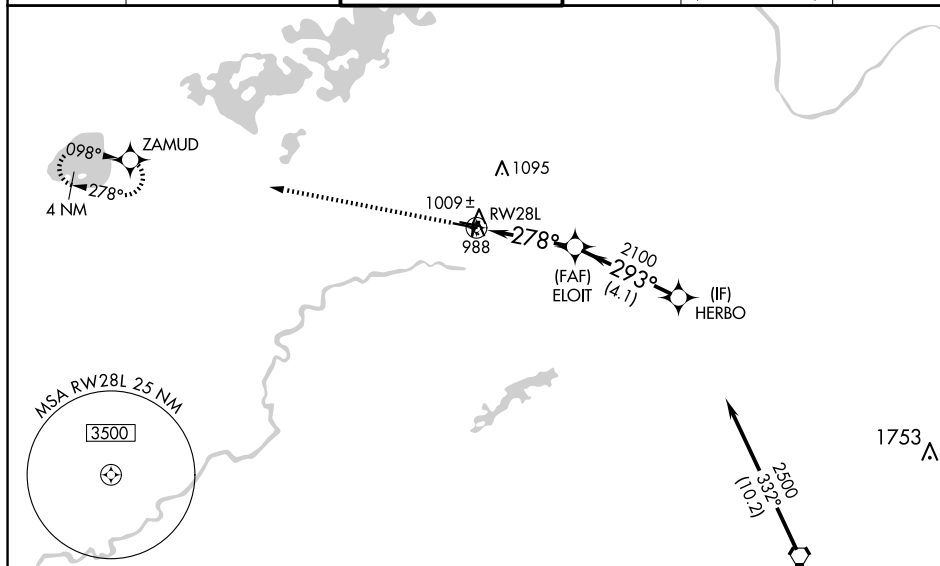
RNAV (GPS) RWY 28L

RNP APCH.

T For uncompensated Baro-VNAV systems, LNAV/VNAV NA below -16°C (2°F) or above 54°C (130°F). When local altimeter setting not received, use Minneapolis-St Paul Intl/Wald-Chamberlain altimeter setting and increase all DA 34 feet and all MDA 40 feet, increase LNAV Cats C and D visibility 1/8 mile. Helicopters visibility reduction below 3/8 SM NA. When Circling to Rwy 18, 36 at night, operational VGSI required, remain on or above VGSI glidepath until threshold.

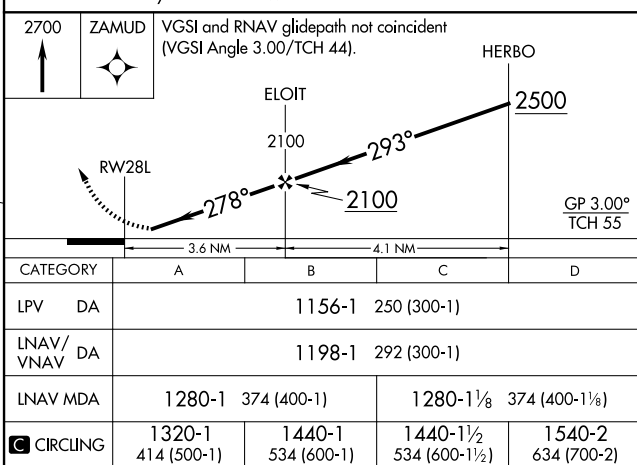
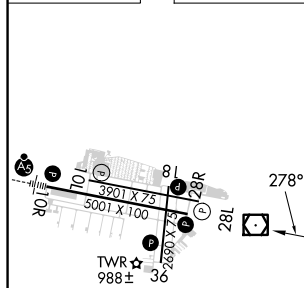
MISSED APPROACH: Climb to 2700
direct ZAMUD and hold.

ATIS 124.9	MINNEAPOLIS APP CON 134.7 284.7	FLYING CLOUD TOWER ★ 119.15 (CTAF) 0	GND CON 121.7	CLNC DEL 121.7 (When twr closed)	UNICOM 122.95
----------------------	---	--	-------------------------	---	-------------------------



ELEV 906	TDZE 906
----------	----------

Procedure NA for arrivals on FGT VORTAC
airway radials 258 CW 011.



HIRL Rwy 10R-28L **L**
REIL Rwy 10L and 28R
REIL Rwy 18, 28L, and 36 **L**
MIRL Rwy 10L-28R
MIRL Rwy 18-36 **L**

MINNEAPOLIS, MINNESOTA

Amdt 2C 07OCT21

44°50'N-93°28'W

FLYING CLOUD (FCM)

RNAV (GPS) RWY 28L

NC-1, 07 AUG 2025 to 04 SEP 2025

NC-1, 07 AUG 2025 to 04 SEP 2025