
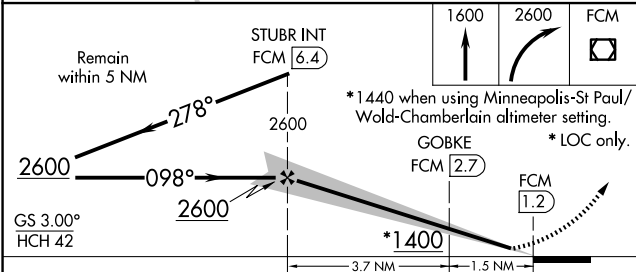
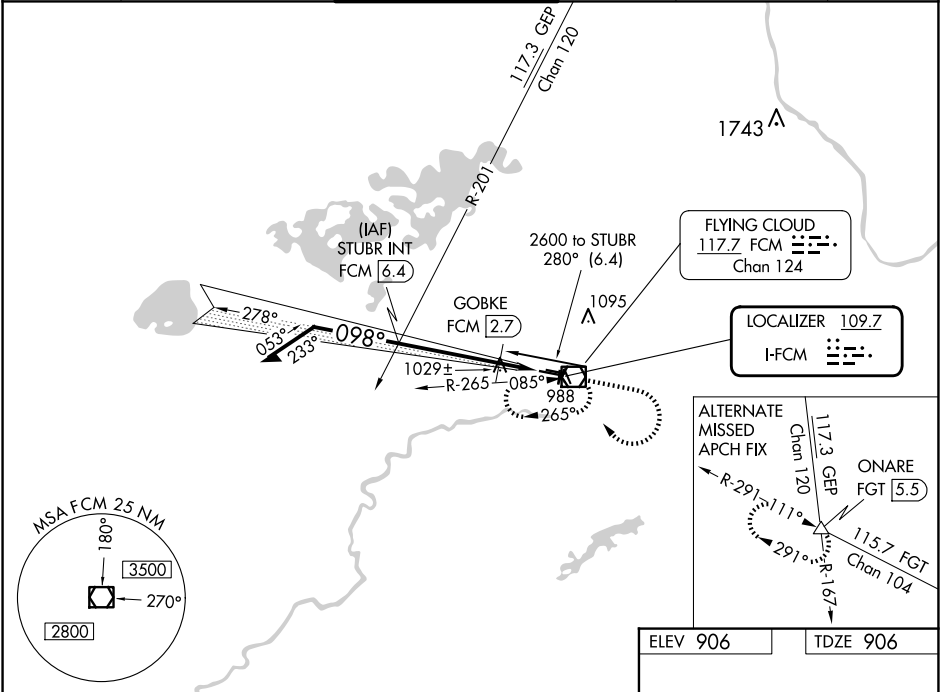


LOC F-FCM 109.7	APP CRS 098°	Rwy Idg TDZE Apt Elev	5001 906 906
---------------------------	------------------------	-----------------------------	---

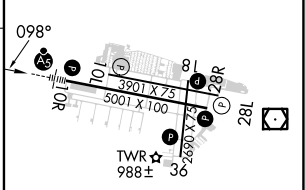
COPTER ILS or LOC RWY 10R
FLYING CLOUD (FCM)

<p>▼ For inoperative MALSR, increase visibility to ½ mile. When local altimeter setting not received, use Minneapolis-St Paul Intl-Wold Chamberlain altimeter setting and increase DA 34 feet and all MDA 40 feet.</p>	<p>MALSR</p> 	<p>MISSED APPROACH: Climb to 1600 then climbing right turn to 2600 direct FCM VOR/DME and hold, continue climb-in-hold to 2600.</p>
--	--	---

ATIS 124.9	MINNEAPOLIS APP CON 134.7 284.7	FLYING CLOUD TOWER ★ 119.15 (CTAF)	GND CON 121.7	CLNC DEL 121.7 (When twr closed)	UNICOM 122.95
----------------------	---	--	-------------------------	---	-------------------------



CATEGORY	COPTER
H-ILS 10R	1106-¼ 200 (200-¼)
H-LOC 10R	1400-¼ 494 (500-¼)
GOBKE FIX MINIMUMS (DME REQUIRED)	
H-LOC 10R	1280-¼ 374 (400-¼)

ELEV 906	TDZE 906
	
HIRL Rwy 10R-28L	
REIL Rwys 10L and 28R	
REIL Rwys 18, 28L, and 36	
MIRL Rwy 10L-28R	
MIRL Rwy 18-36	
FAF to MAP 5.2 NM	
Knots	45 60 75 90 105
Min:Sec	6:56 5:12 4:10 3:28 2:58