


VOR TBN	APP CRS	Rwy Idg	5535
110.0	138°	TDZE	1158
		Apt Elev	1160

VOR RWY 15

WAYNESVILLE-ST ROBERT RGNL FORNEY FLD (TBN)

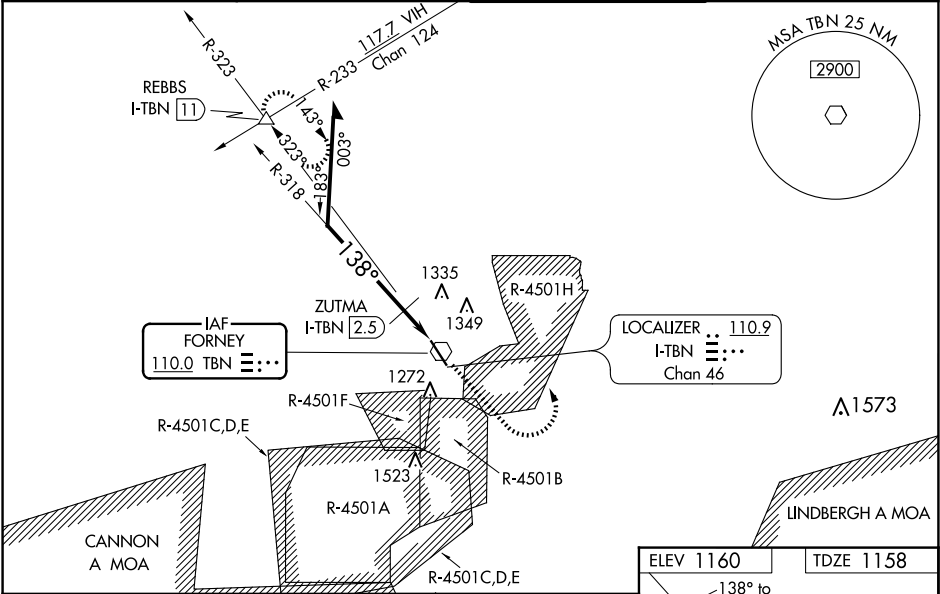
Procedure NA when R-4501B or R-4501H in use. Inop table does not apply to S-15 Cat A and B or to ZUTMA fix minimums. Circling NA west of Rwy 15-33. When local altimeter setting not received, use Rolla Ntl altimeter setting and increase all MDAs 80 feet and increase S-15 visibility Cats C/D ¼ SM and Circling Cat C visibility ½ SM. Inop table does not apply to Cats A/B when using Rolla Ntl altimeter setting. For inop ALS when using Rolla Ntl altimeter setting increase S-15 Cats C/D visibility to 1¾ SM. For inop ALS when using Rolla Ntl altimeter setting increase S-15 ZUTMA fix minimums Cats C/D visibility to 1¾ SM. #DME from I-TBN LOC/DME.

MALSR



MISSED APPROACH: Climb to 2000 then climbing left turn to 3000 on TBN VOR R-323 to REBBS INT/I-TBN LOC/DME 11 DME and hold.

D-ATIS	KANSAS CITY CENTER	FORNEY TOWER ★	GND CON
118.7 229.4	128.35 284.675	125.4 (CTAF) 268.7	123.75 256.8



Remain within 10 NM

2800

318°

138°

*1700

3.00°

TCH 50

0.6 NM

1 NM

TBN VOR

2000

3000

TBN R-323

REBBS

*1780 when using Rolla Ntl altimeter setting.

ELEV 1160

TDZE 1158

138° to VOR

1271

TWR 1250

CATEGORY	A	B	C	D
S-15	1700-1	542 (600-1)	1700-1½	542 (600-1½)
CIRCLING	1700-1	540 (600-1)	1700-1½	1720-2
		540 (600-1½)	560 (600-2)	
ZUTMA FIX MINIMUMS #				
S-15	1520-1	362 (400-1)		
CIRCLING	1580-1	1660-1	1660-1½	1720-2
	420 (500-1)	500 (500-1)	500 (500-1½)	560 (600-2)