

WAAS CH 99499 W33A	APP CRS 327°	Rwy Idg 5510 TDZE 1153 Apt Elev 1160
--	------------------------	---

RNAV (GPS) RWY 33

WAYNESVILLE-ST ROBERT RGNL FORNEY FLD (TBN)

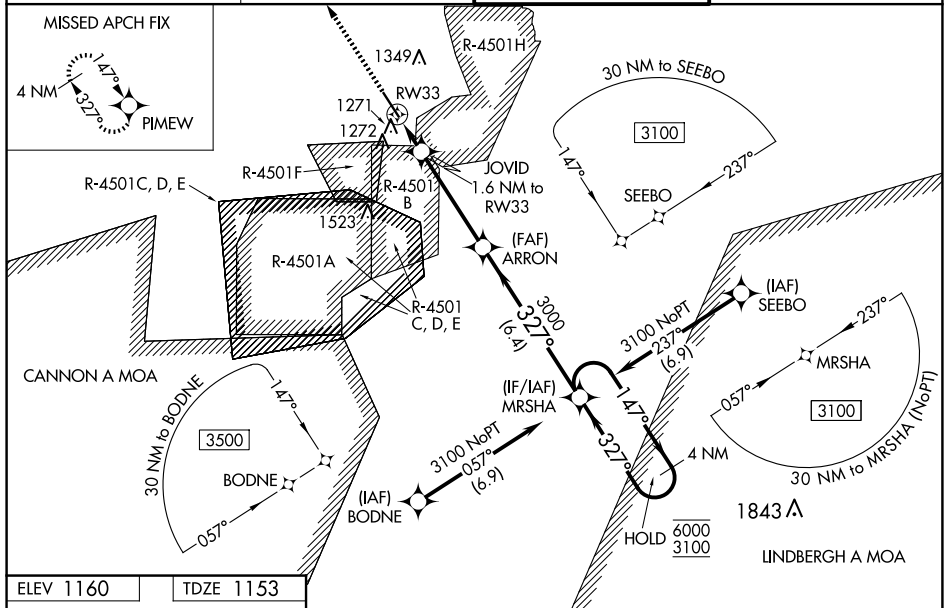
RNP APCH - GPS.

- V** For uncompensated Baro-VNAV systems, LNAV/VNAV NA below -15°C or above 54°C. When local altimeter setting not received, use Rolla Ntl altimeter setting and increase LPV DA to 1472 feet, increase LNAV/VNAV DA to 1521 feet and all MDAs 80 feet. Increase LNAV Cat C/D visibility to RVR 6000. Inop table does not apply to LPV all Cats, LNAV/VNAV all Cats, and LNAV Cats A/B. For inop ALS increase LNAV Cats C/D visibility to RVR 6000. VDP and Baro-VNAV NA when using Rolla Ntl altimeter setting. Circling NA west of Rwy 15-33. Rwy 33 helicopter visibility reduction below ¾ SM NA. Inop table does not apply to LPV all Cats, LNAV/VNAV all Cats, and LNAV Cats A/B when using Rolla Ntl altimeter setting.

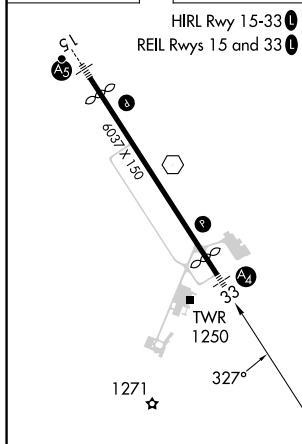
MALS

MISSED APPROACH.
Climb to 3100 direct
PIMEW and hold.

D-ATIS 118.7 229.4	KANSAS CITY CENTER 128.35 284.675	FORNEY TOWER ★ 125.4 (CTAF) 0 268.7	GND CON 123.75 256.8
------------------------------	---	---	--------------------------------



ELEV 1160		TDZE 1153
-----------	--	-----------



<div><div>3100 ↑</div><div>PIMEW </div></div>		<div><div><div>JOVID 1.6 NM to RW33</div><div>1.1 NM to RW33</div><div></div></div><div>ARRON 3000</div><div>MRSWA 4 NM Holding Pattern</div><div><div>147° → 6000</div><div>← 327° 3100</div></div><div>GP 3.00° TCH 36</div></div>			
CATEGORY		A	B	C	D
LPV DA	1403/50 250 (300-1)				
LNAV/ VNAV	1452/50 299 (300-1)				
LNAV MDA	1540/50 387 (400-1)				
CIRCLING	1580-1 420 (500-1)	1660-1 500 (500-1)	1660-1½ 500 (500-1½)	1720-2 560 (600-2)	

RNAV (GPS) RWY 33