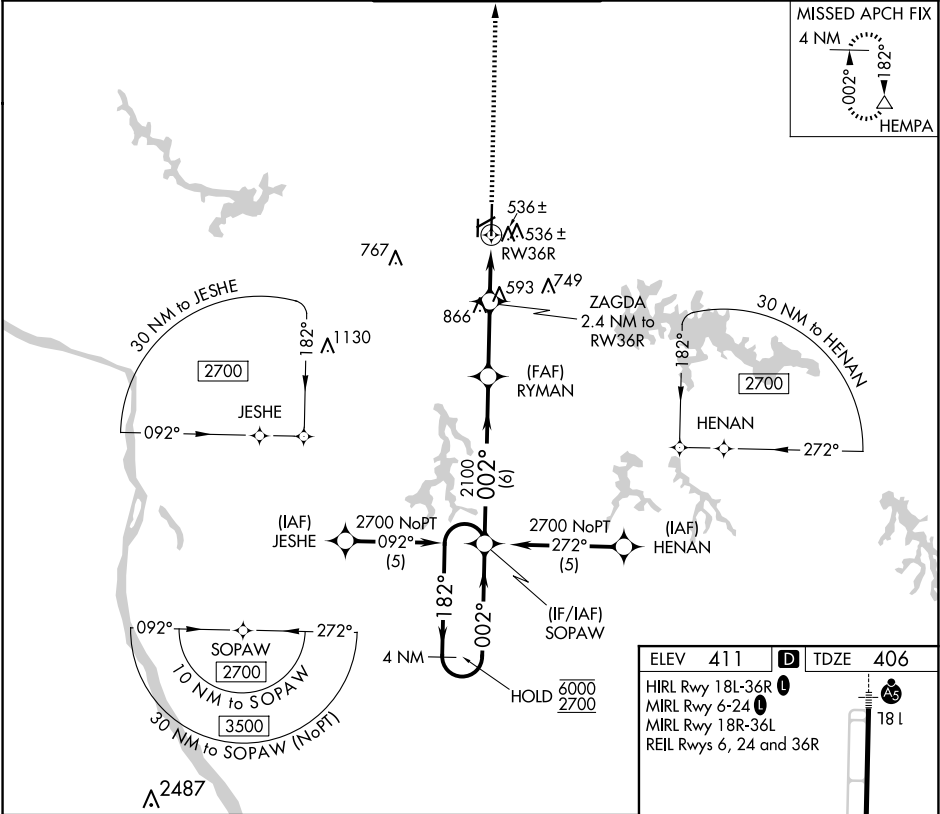


APP CRS	Rwy Idg	6506
002°	TDZE	406
	Apt Elev	411

RNAV (GPS) RWY 36R  
SOUTHERN ILLINOIS (MDH)

RNP APCH.			MISSED APPROACH: Climb to 2700 direct HEMPA and hold.	
Circling Rwy 6, 36L NA at night. Rwy 36R helicopter visibility reduction below ¾ SM NA.				
ATIS 119.725	KANSAS CITY CENTER 127.475 346.275	SOUTHERN TOWER ★ 125.35 (CTAF) 0 322.4	GND CON 121.8	UNICOM 122.95



4 NM Holding Pattern		VGSI and descent angles not coincident (VGSI Angle 3.00/TCH 45).		2700	HEMPA
SOPAW		RYMAN		ZAGDA	
6000 2700		182°		002°	
002°		002°		002°	
2100		1200		1200	
6 NM		2.7 NM		1.1 NM	
1.3 NM		1.3 NM		1.3 NM	
CATEGORY	A	B	C	D	
LNNAV MDA	860-1	454 (500-1)	860-1 3/8	454 (500-1 3/8)	
CIRCLING	900-1 489 (500-1)	920-1 509 (600-1)	1180-2 1/4 769 (800-2 1/4)	1180-2 1/2 769 (800-2 1/2)	

