

APP CRS	Rwy Idg	6506
182°	TDZE	407
	Apt Elev	411

RNAV (GPS) RWY 18L

SOUTHERN ILLINOIS (MDH)

RNP APCH.

▼

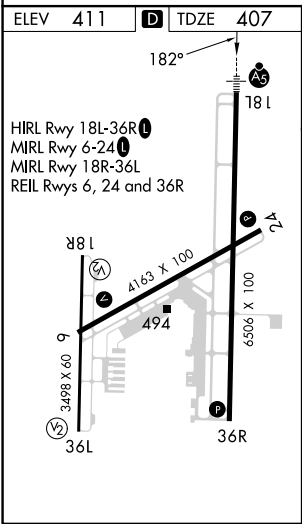
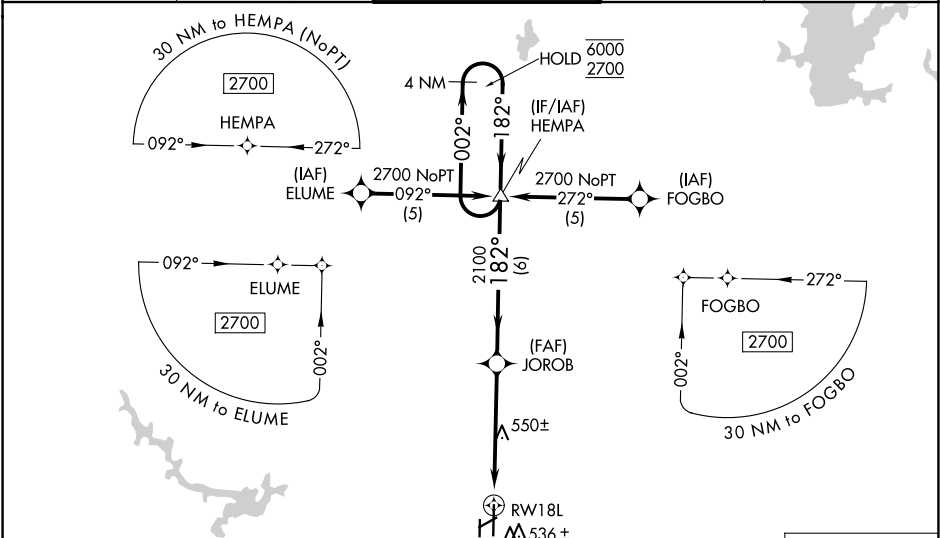
▲

Circling Rwy 6, 36L NA at night.
For uncompensated Baro-VNAV systems,
LNAV/VNAV NA below -15°C or above 54°C.

MALSR

MISSED APPROACH:
Climb to 2700 direct
SOPAW and hold.

ATIS 119.725	KANSAS CITY CENTER 127.475 346.275	SOUTHERN TOWER ★ 125.35 (CTAF) 0 322.4	GND CON 121.8	UNICOM 122.95
-----------------	---------------------------------------	---	------------------	------------------



2700 SOPAW

HEMPA Holding Pattern

*LNAV only

*1.1 NM to RWY18L

RW18L

JOROB

2100

182°

002°

6000

2700

GP 3.00°

TCH 55

CATEGORY	A	B	C	D
LNAV/VNAV DA	804- ⁵ / ₈		397 (400- ⁵ / ₈)	
LNAV MDA	800- ¹ / ₂	393 (400- ¹ / ₂)	800- ⁵ / ₈	393 (400- ⁵ / ₈)
CIRCLING	900-1 489 (500-1)	920-1 509 (600-1)	1180-2 ¹ / ₄ 769 (800-2 ¹ / ₄)	1180-2 ¹ / ₂ 769 (800-2 ¹ / ₂)