

LOM MD <b>388</b>	APP CRS <b>182°</b>	Rwy Idg TDZE Apt Elev <b>6506</b> <b>407</b> <b>411</b>	<b>NDB RWY 18L</b> SOUTHERN ILLINOIS (MDH)	
----------------------	------------------------	--	---	--

▼

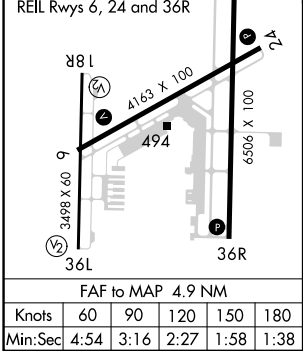
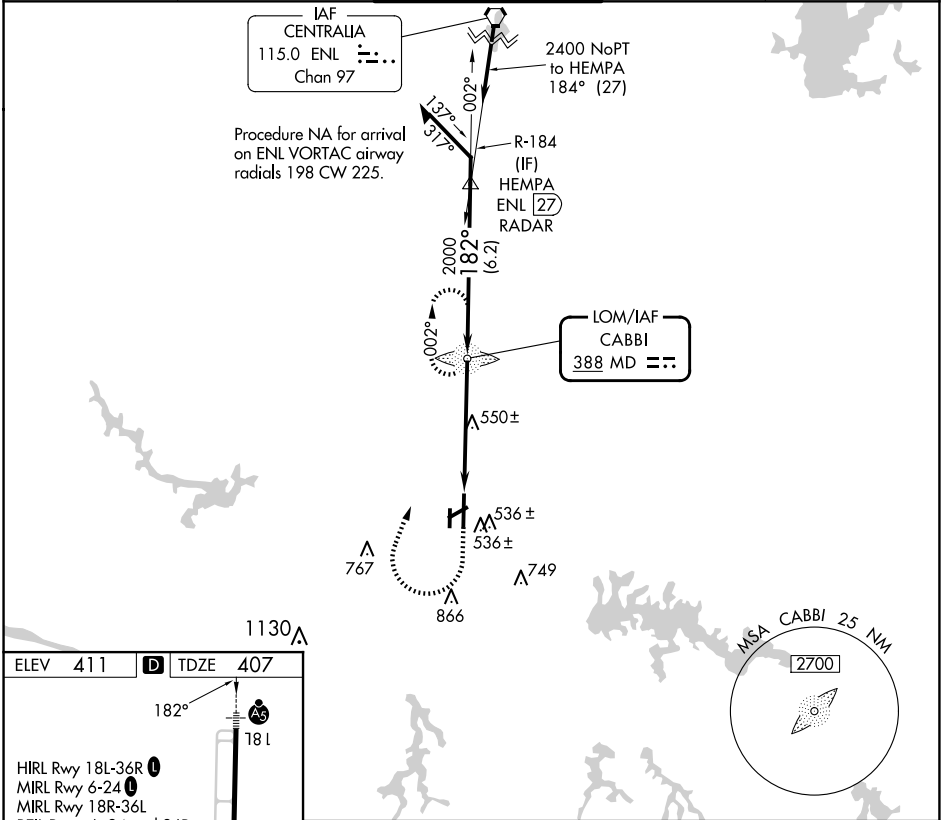
▲

Circling Rwy 6, 36L NA at night.  
For inop ALS, increase S-18L Cat A/B visibility to 1 SM.

MALS

MISSED APPROACH: Climb to 2100 then climbing right turn to 2400 direct CABBI LOM and hold.

ATIS <b>119.725</b>	KANSAS CITY CENTER <b>127.475 346.275</b>	SOUTHERN TOWER ★ <b>125.35 (CTAF) 322.4</b>	GND CON <b>121.8</b>	UNICOM <b>122.95</b>
------------------------	--	--	-------------------------	-------------------------



2100	2400	MD	MD LOM	Remain within 10 NM
4.9 NM				
CATEGORY	A	B	C	D
S-18L	860-3/4	453 (500-3/4)	860-7/8	453 (500-7/8)
CIRCLING	900-1 489 (500-1)	920-1 509 (600-1)	1180-2 1/4 769 (800-2 1/4)	1180-2 1/2 769 (800-2 1/2)

EC-3, 07 AUG 2025 to 04 SEP 2025

EC-3, 07 AUG 2025 to 04 SEP 2025