

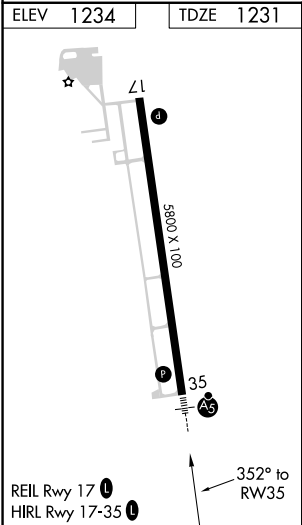
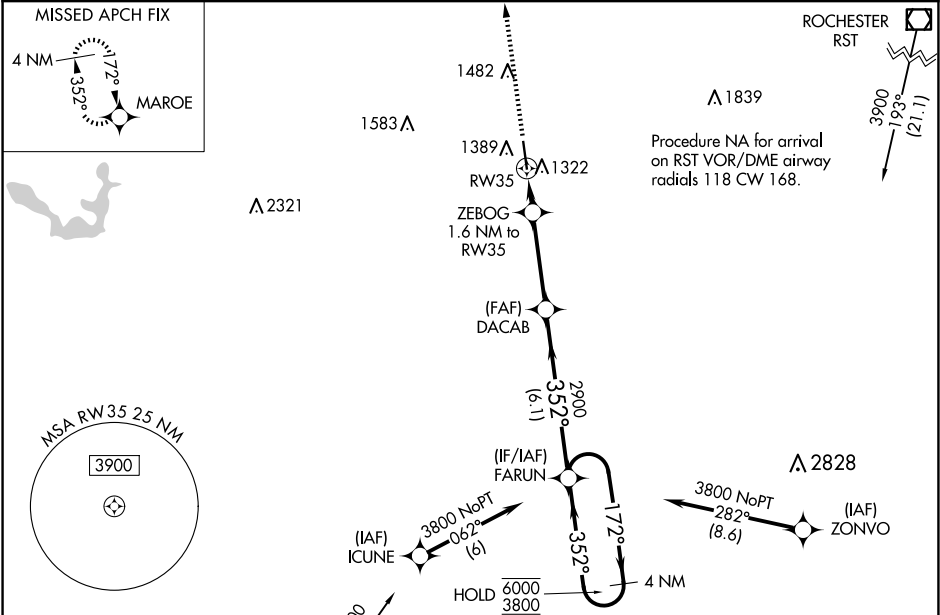
WAAS CH 99506 W35A	APP CRS 352°	Rwy Idg TDZE Apt Elev	5800 1231 1234
--	------------------------	-----------------------------	---

RNAV (GPS) RWY 35

AUSTIN MUNI (AUM)

RNP APCH. <div><div>▼</div><div>▲</div></div> For uncompensated Baro-VNAV systems, LNAV/VNAV NA below -17°C or above 54°C. For inop ALS increase LNAV/VNAV all Cats visibility to ¾ SM and LNAV Cats C/D visibility to 1 SM.	MALSR 	MISSED APPROACH: Climb to 2900 direct MAROE and hold.
---	-----------	---

AWOS-3 119.025	ROCHESTER APP CON ★ 119.8 251.125	UNICOM 122.7 (CTAF) 0
--------------------------	---	---------------------------------



 MASON CITY MCW		Procedure NA for arrival on MCW VOR/DME airway radials 343 CW 100.			
2900 	MAROE 	VGSi and RNAV glidepath not coincident (VGSi Angle 3.00/TCH 42).		4 NM Holding Pattern	
*LNAV only					
		GP 3.00° TCH 47			
CATEGORY		A	B	C	D
LPV DA		1431-1/2 200 (200-1/2)			
LNAV/VNAV DA		1483-1/2 252 (300-1/2)			
LNAV MDA		1580-1/2 349 (400-1/2)		1580-5/8 349 (400-5/8)	
CIRCLING		1700-1 466 (500-1)		1800-1 1/2 566 (600-1 1/2)	1880-2 646 (700-2)

NC-1, 07 AUG 2025 to 04 SEP 2025

NC-1, 07 AUG 2025 to 04 SEP 2025