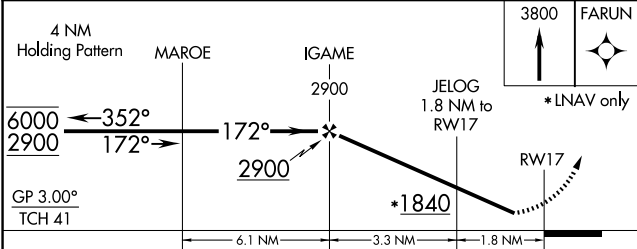
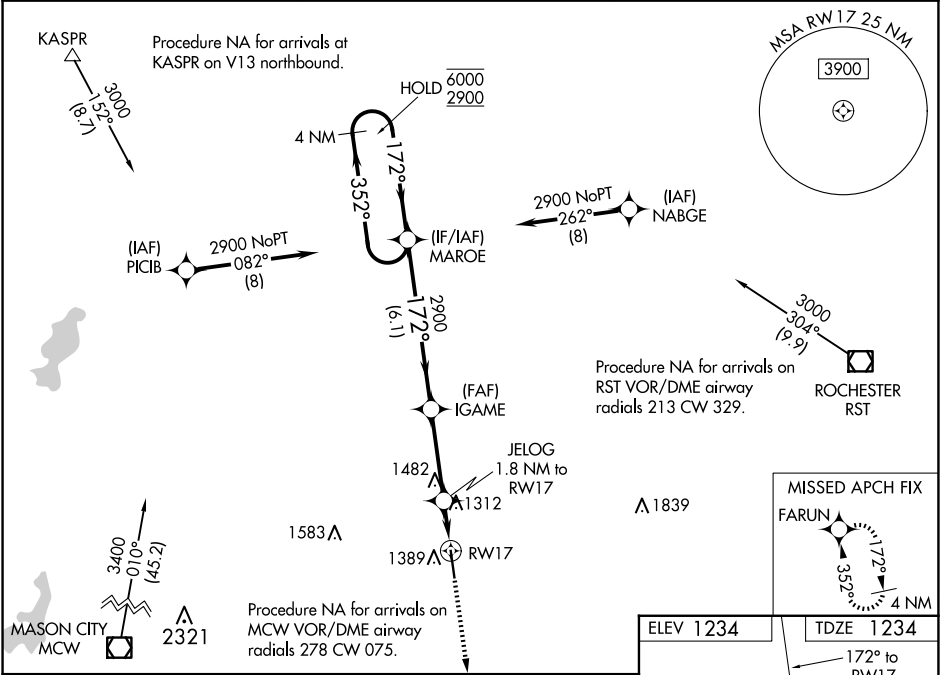


WAAS CH <b>82132</b> <b>W17A</b>	APP CRS <b>172°</b>	Rwy Idg TDZE Apt Elev	<b>5800</b> <b>1234</b> <b>1234</b>
--	------------------------	-----------------------------	---

RNAV (GPS) RWY 17  
AUSTIN MUNI (AUM)

RNP APCH. ▼ ▲ Rwy 17 helicopter visibility reduction below ¾ SM NA. For uncompensated Baro-VNAV systems, LNAV/VNAV NA below -17°C or above 54°C.	MISSED APPROACH: Climb to 3800 direct FARUN and hold.
--	--

AWOS-3 <b>119.025</b>	ROCHESTER APP CON* <b>119.8 251.125</b>	UNICOM <b>122.7</b> (CTAF) <b>0</b>
--------------------------	--	--



CATEGORY	A	B	C	D
LPV DA		1484-1	250 (300-1)	
LNAV/VNAV DA		1505-1	271 (300-1)	
LNAV MDA		1580-1	346 (400-1)	
CIRCLING	1700-1 466 (500-1)		1800-1½ 566 (600-1½)	1880-2 646 (700-2)