

APP CRS	Rwy Ldg	5819
229°	TDZE	296
	Apt Elev	306

RNAV (GPS) Y RWY 23  
FREDERICK MUNI (FDK)

RNP APCH.

**T** Inop table does not apply to Cat C. Rwy 23 helicopter visibility reduction  
**A** below  $\frac{3}{4}$  SM NA. Circling Rwy 30 NA at night.

ODALS

**MISSED APPROACH:** Climbing left turn to 3000 direct EMI VORTAC and hold.

ATIS  
124.875

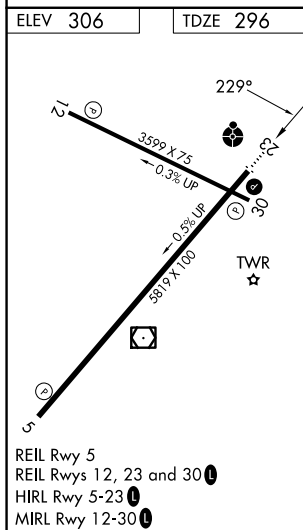
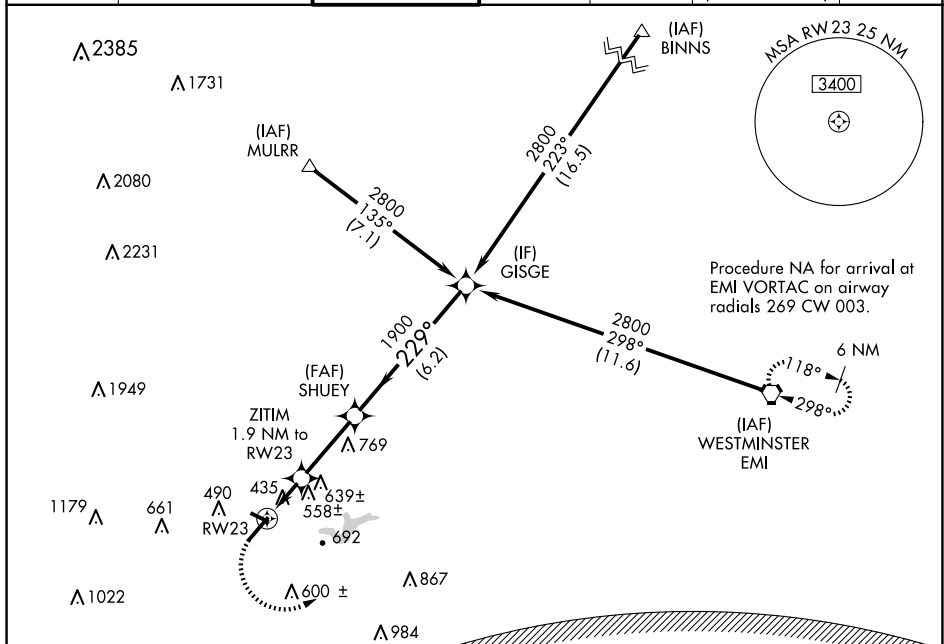
POTOMAC APP CON  
126.1 338.25

FREDERICK TOWER  
**132.4** (CTAF) **L**

GND CON  
127.425

CLNC DEL  
127.425

CLNC DEL  
**126.9**  
(When twr closed)

UNICOM  
122.95

WASHINGTON DC  
METROPOLITAN SFRA

WARNING -- WASHINGTON DC SFRA.  
CTC POTOMAC APP CON

3000 EMI VGS and descent angles not coincident  
(VGS Angle 3.00/TCH 54).

RW23

1.9 NM

3.41°  
TCH 50

1020

3 NM

SHUEY

1900

229°

6.2 NM

GISGE

2800

Procedure  
Turn  
NA

CATEGORY	A	B	C	D
LNAV MDA	820-3/4 524 (600-3/4)		820-1 1/2 524 (600-1 1/2)	820-1 3/4 524 (600-1 3/4)
<b>C</b> CIRCLING	920-1 614 (700-1)		1100-2 1/4 794 (800-2 1/4)	1200-2 3/4 894 (900-2 3/4)