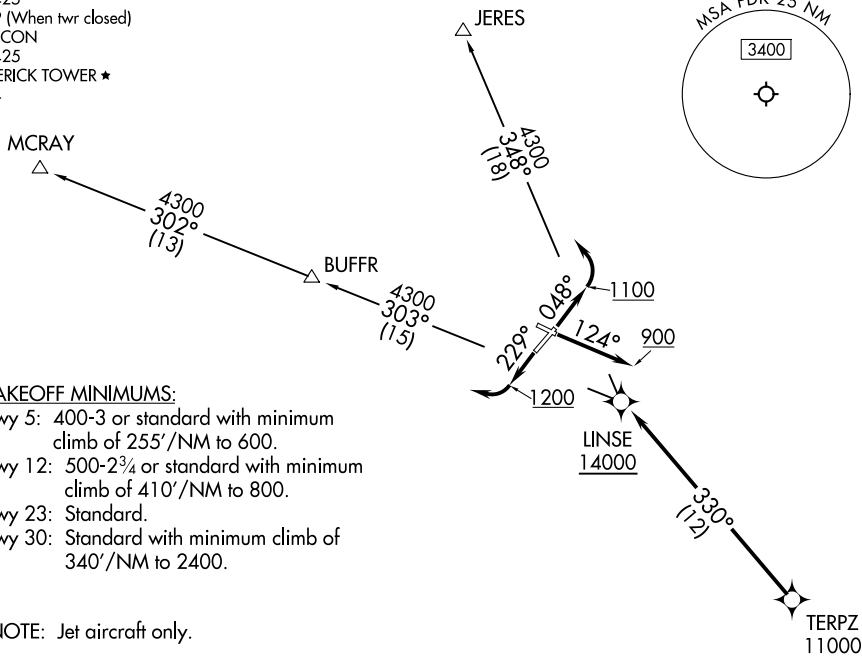
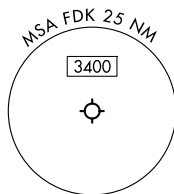


POTOMAC DEP CON
126.1 338.25
ATIS
124.875
CLNC DEL
127.425
126.9 (When twr closed)
GND CON
127.425
FREDERICK TOWER ★
132.4

RNAV 1 - DME/DME/IRU or GPS.

RADAR required.

TOP ALTITUDE:
16000



TAKEOFF MINIMUMS:

Rwy 5: 400-3 or standard with minimum climb of 255'/NM to 600.

Rwy 12: 500-2¾ or standard with minimum climb of 410'/NM to 800.

Rwy 23: Standard.

Rwy 30: Standard with minimum climb of 340'/NM to 2400.

NOTE: Jet aircraft only.

NOTE: Chart not to scale.

DEPARTURE ROUTE DESCRIPTION

TAKEOFF RUNWAY 5: Climb on heading 048° to 1100 before turning left.
TAKEOFF RUNWAY 12: Climb on heading 124° to 900 before proceeding westbound.
TAKEOFF RUNWAY 23: Climb on heading 229° to 1200 before turning right.

Climb on assigned heading for RADAR vectors to cross TERPZ at or above 11 000, thence....

...then on track 330° to cross LINSE at or above 14000. Then on assigned transition. Maintain 16000, expect filed altitude 10 minutes after departure.

JERES TRANSITION (LINSE2.JERES)
 MCRA Y TRANSITION (LINSE2.MCRA Y)