

LOC/DME I-ONA	APP CRS	Rwy Idg	5199
109.35	300°	TDZE	656
Chan 30(Y)		Apt Elev	656

ILS Z or LOC Z RWY 30

WINONA MUNI/MAX CONRAD FLD (ONA)

RNAV 1-GPS or radar required for procedure entry. DME required.
RNAV-1 GPS required from MAP to ALEYU.

V

NA

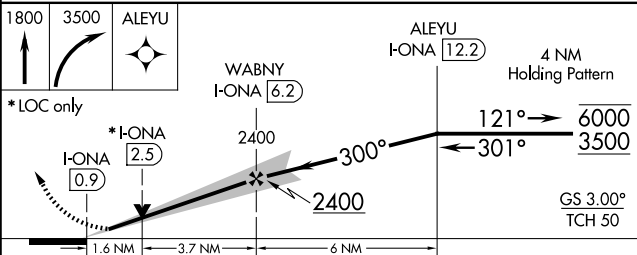
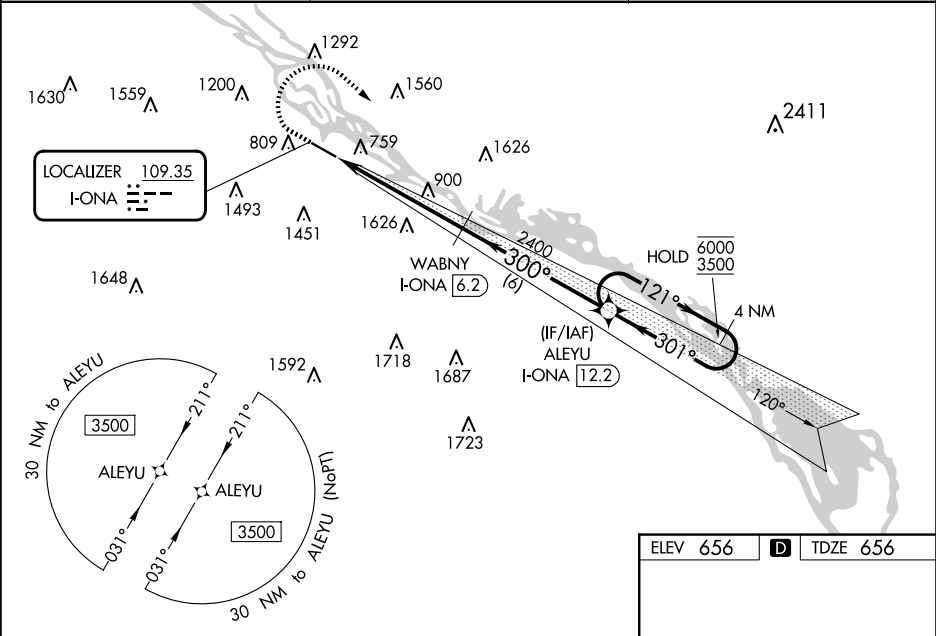
-29°C

VDP NA with La Crosse altimeter setting. When local altimeter setting not received, use La Crosse altimeter setting and increase S-ILS 30 DA to 1064 and all visibilities ½ SM, increase all MDA 60 feet, and visibility S-LOC 30 Cat C/D ½ SM and Circling Cat B visibility ½ SM. For inop ALS, increase S-ILS 30 all Cats visibility to 1 ½ SM, and S-LOC 30 Cats C/D visibility to 1 ½ SM. For inop ALS when using La Crosse altimeter setting, increase S-ILS 30 all Cats visibility to 1 ½ SM, and increase S-LOC 30 Cats C/D visibility to 1 ¾ SM.

MALSR

MISSED APPROACH:
Climb to 1800 then climbing right turn to 3500 direct ALEYU and hold.

AWOS-3 118.075	MINNEAPOLIS CENTER 128.6 363.0	UNICOM 122.8 (CTAF) 0
--------------------------	--	---------------------------------



CATEGORY	A	B	C	D
S-ILS 30	1053-¾ 397 (400-¾)			
S-LOC 30	1220-½ 564 (600-½)	1220-1¼ 564 (600-1¼)		
CIRCLING	1560-1¼ 904 (1000-1¼)	1600-1¼ 944 (1000-1¼)	1780-3 1124 (1200-3)	1980-3 1324 (1400-3)

