




LOC/DME FONA 109.35 Chan 30 (Y)	APP CRS 300°	Rwy Idg 5199 TDZE 656 Apt Elev 656
---	------------------------	---

ILS Y or LOC Y RWY 30
WINONA MUNI/MAX CONRAD FLD (ONA)

DME required.

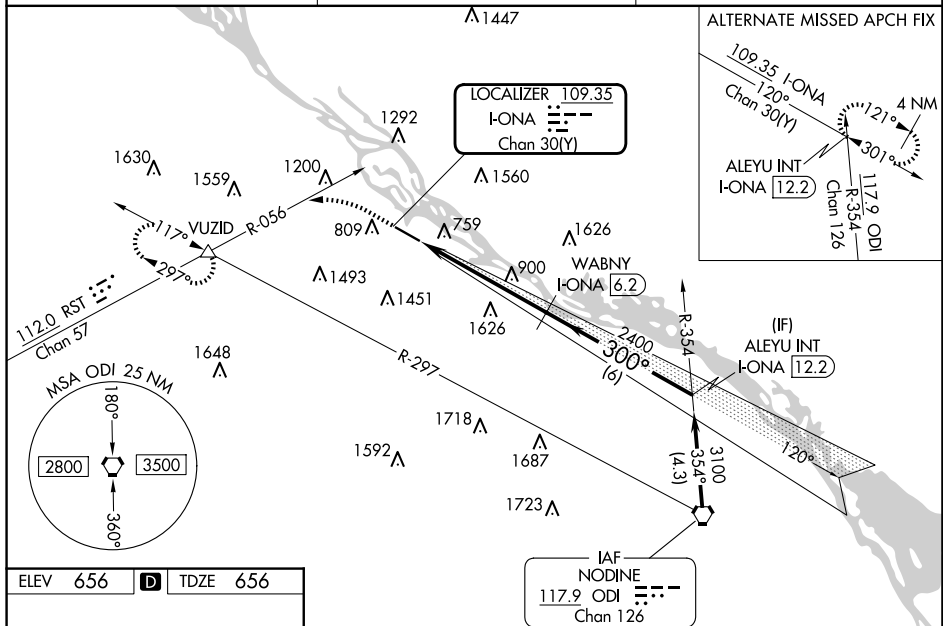
 VDP  NA  -29°C	VDP NA with La Crosse alimeter setting. When local alimeter setting not received, use VDP Crosse alimeter setting and increase S-HLS 30 DA to 1127 and all visibilities ½ mile, increase all MDA 60 feet, and visibility S-LOC 30 Cat C/D ½ mile, and Circling Cat B ¾ mile. For inop ALS, increase S-HLS 30 all Cats visibility to 1½ mile, increase S-LOC 30 Cats C/D visibility to 1 ½ mile. For inop ALS when using La Crosse alimeter setting, increase S-HLS 30 all Cats visibility to 1½ mile, increase S-LOC 30 Cats C/D visibility to 1 ½ mile.
--	--

MALSR

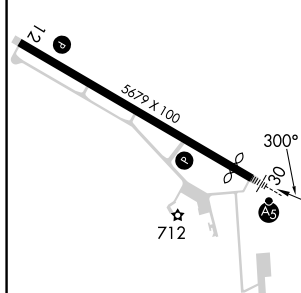


MISSED APPROACH:
Climb to 1800 then
climbing left turn to
3000 on RST VOR/
DME R-056 to VUZID
INT and hold.

AWOS-3 118.075	MINNEAPOLIS CENTER 128.6 363.0	UNICOM 122.8 (CTAF) 0
--------------------------	--	---------------------------------



Page 10 of 10

REIL Rwy 12 **L**MIRL Rwy 12-30 **L**

1800 ↑	3000 RST R-056	VUZID △				
CATEGORY	A	B	C	D		
S-ILS 30	1074-1½ 418 (500-1½)					
S-LOC 30	1220-½	564 (600-½)	1220-¼	564 (600-¼)		
C CIRCLING	1560-1¼ 904 (1000-1¼)	1600-1¼ 944 (1000-1¼)	1780-3 1124 (1200-3)	1980-3 1324 (1400-3)		