

WAAS CH 50217 W27A	APP CRS 271°	Rwy Ldg TDZE 1605 Apt Elev 1623
--	------------------------	---

RNAV (GPS) RWY 27

RHINELANDER/ONEIDA COUNTY (RHI)

RNP APCH - GPS.

▼

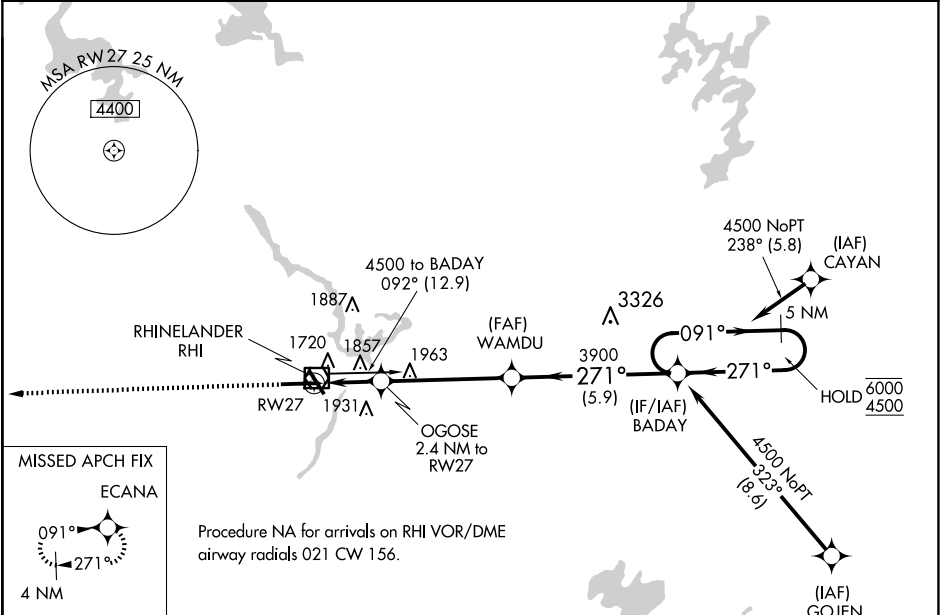
For uncompensated Baro-VNAV systems, LNAV/VNAV

▲

NA below -22°C or above 54°C.

MISSED APPROACH: Climb to 4000 direct ECANA and hold.

ASOS 126.825	MINNEAPOLIS CENTER 133.65 281.5	UNICOM 123.0 (CTAF) 0
------------------------	---	--



ELEV 1623	D	TDZE 1605
-----------	----------	-----------

	4000 ECANA	WAMDU	BADAY	5 NM Holding Pattern
	OGOSE 2.4 NM to RWY 27	3900	3900	091° → 6000 ← 271° 4500
	1.5 NM to RWY 27	2420		GP 3.00° TCH 50
	1.5	0.9	4.7 NM	5.9 NM
CATEGORY	A	B	C	D
LPV DA	1805-¾ 200 (200-¾)			
LNAV/VNAV DA	1920-⅞ 315 (300-⅞)			
LNAV MDA	2120-1	515 (500-1)	2120-1⅓	515 (500-1⅓)
CIRCLING	2120-1 497 (500-1)	2260-1 637 (700-1)	2260-1¾ 637 (700-1¾)	2280-2 657 (700-2)

HIRL Rwy 9-27 and 15-33 **0**

REIL Rwy 15, 27 and 33 **0**