

APP CRS
150°

Rwy Ldg
TDZE
Apt Elev

5201
1600
1623

RNAV (GPS) RWY 15

RHINELANDER/ONEIDA COUNTY(RHI)

RNP APCH - GPS.

▽

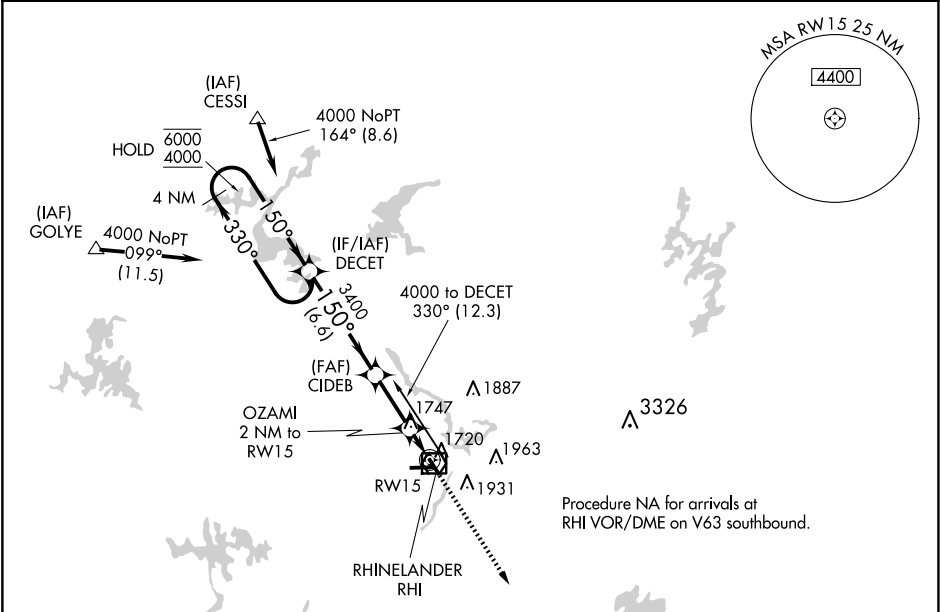
▲

Rwy 15 helicopter visibility reduction below ¾ SM NA.

MISSED APPROACH:

Climb to 3500 direct CIREN and hold.

ASOS 126.825	MINNEAPOLIS CENTER 133.65 281.5	UNICOM 123.0 (CTAF) 0
-----------------	------------------------------------	--------------------------



4 NM Holding Pattern

DECT

6000
4000

330°
150°

150°

3400

3.05° ≥ TCH 53

2280

0.9 NM to RW15

6.6 NM

3.4 NM

1.1

0.9

3500 CIREN

150°

6800 X 150

0.4% UP

330

33

CATEGORY	A	B	C	D
LNVA MDA	2000-1	400 (400-1)	2000-1½	400 (400-1½)
CIRCLING	2100-1 477 (500-1)	2260-1 637 (700-1)	2260-1¾ 637 (700-1¾)	2280-2 657 (700-2)

RHINELANDER, WISCONSIN

Amdt 1F 03NOV22

RHINELANDER/ONEIDA COUNTY (RHI)

RNAV (GPS) RWY 15

EC-3, 07 AUG 2025 to 04 SEP 2025

EC-3, 07 AUG 2025 to 04 SEP 2025