

EC-3, 07 AUG 2025 to 04 SEP 2025





RHINELANDER, WISCONSIN

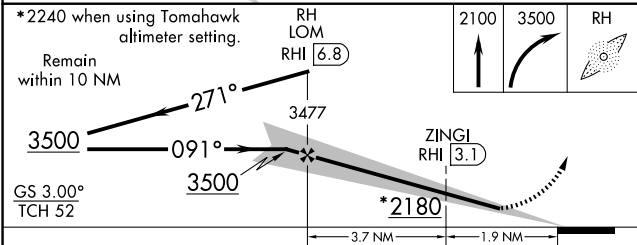
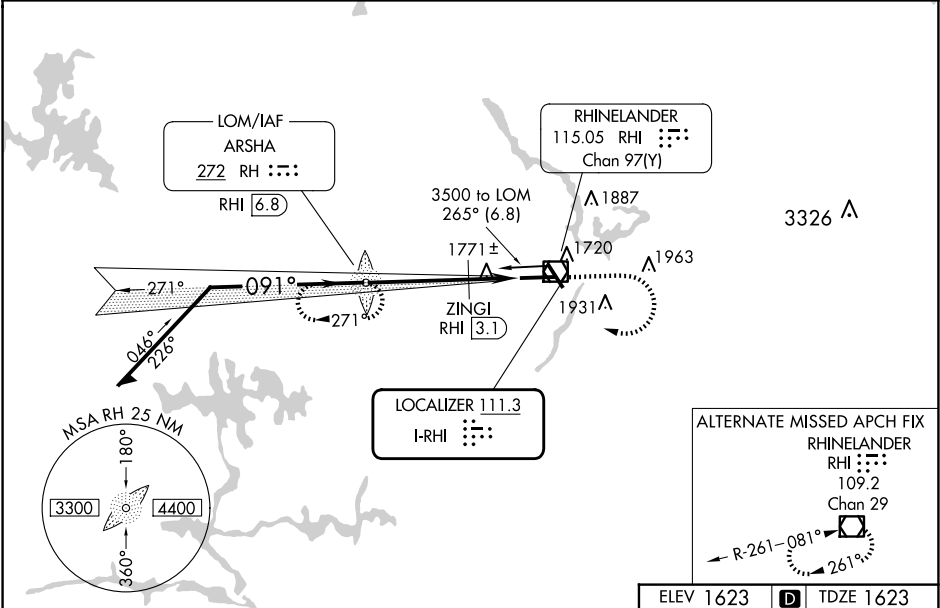
AL-5085 (FAA)

25163

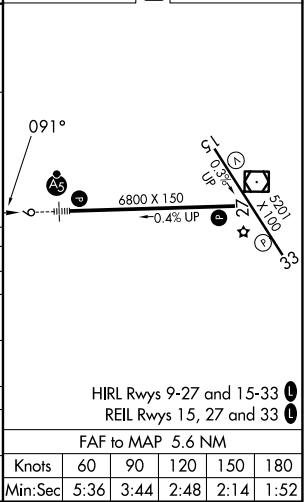
LOC I-RHI 111.3	APP CRS 091°	Rwy Ldg TDZE Apt Elev 6799 1623 1623
---------------------------	------------------------	--

ILS or LOC RWY 9
RHINELANDER/ONEIDA COUNTY (RHI)

ADF or DME required.		<div>MALSR</div> <div></div>	<div>MISSED APPROACH:</div> <div>Climb to 2100 then climbing right turn to 3500 direct ARSHA LOM/RHI VOR/DME 6.8 DME and hold, continue climb-in-hold to 3500.</div>
<div><div><div><div></div><div></div></div><div>NA</div></div></div> <div>** DME from RHI VOR/DME.</div>			
<div>ASOS</div> <div>126.825</div>	<div>MINNEAPOLIS CENTER</div> <div>133.65 281.5</div>	<div>UNICOM</div> <div>123.0 (CTAF) </div>	



CATEGORY	A	B	C	D
S-ILS 9		1823-1/2	200 (200-1/2)	
S-LOC 9	2180-1/2 557 (600-1/2)		2180-1 1/8 557 (600-1 1/8)	
CIRCLING	2180-1 557 (600-1)	2260-1 637 (700-1)	2260-1 3/4 637 (700-1 3/4)	2280-2 657 (700-2)
ZINGI FIX MINIMUMS**				
S-LOC 9	2040-1/2 417 (500-1/2)		2040-3/4 417 (500-3/4)	
CIRCLING	2100-1 477 (500-1)	2260-1 637 (700-1)	2260-1 3/4 637 (700-1 3/4)	2280-2 657 (700-2)



RHINELANDER, WISCONSIN
Amdt 8F 03NOV22

45°38'N-89°28'W

RHINELANDER/ONEIDA COUNTY (RHI)
ILS or LOC RWY 9

EC-3, 07 AUG 2025 to 04 SEP 2025