

LOC I-PSK
110.9

APP CRS
058°

Rwy Ldg
TDZE
Apt Elev
6201
2105
2105

DME required.

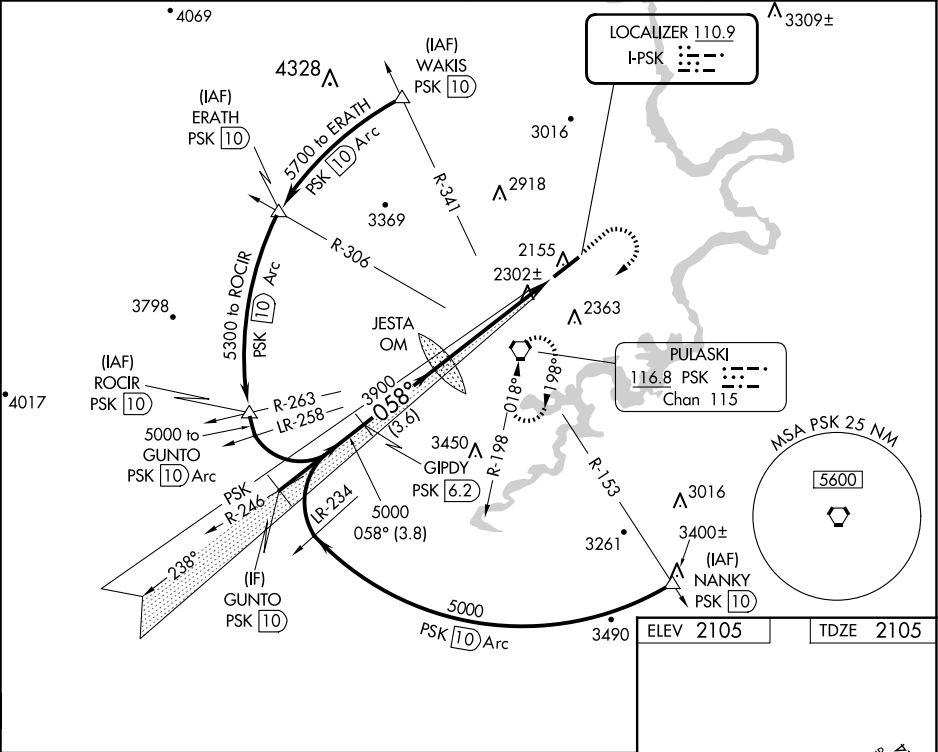
NA

Circling NA for Cat D northwest of Rwy 6-24. Inop table does not apply to S-ILS 6 all Cats and S-LOC 6 Cats A and B. For inop ALS, increase S-LOC 6 Cat C/D visibility to 1 3/4 SM.

MALSR

MISSED APPROACH: Climb to 3000 then climbing right turn to 5000 direct PSK VORTAC and hold, continue climb-in-hold to 5000.

AWOS-3 127.375	ROANOKE APP CON 126.0 339.8	ROANOKE CLNC DEL 121.7	UNICOM 122.7 (CTAF)
--------------------------	---------------------------------------	----------------------------------	-------------------------------



<div><div>GUNTO PSK 10</div><div>GIPDY PSK 6.2</div><div>JESTA OM</div><div>3823</div><div>3900</div><div>5000</div><div>058°</div><div>GS 3.00° TCH 58</div></div>					<div><div>3000</div><div>5000</div><div>PSK</div></div>				
<div><div>5000</div><div>3.8 NM</div><div>3.6 NM</div><div>5.1 NM</div></div>					<div><div>058°</div><div>0.5% UP</div><div>6201 X 150</div><div>A5</div><div>058°</div><div>HIRL Rwy 6-24</div><div>REIL Rwy 24</div></div>				
CATEGORY	A	B	C	D	FAF to MAP 5.1 NM				
S-ILS 6	2305-1 200 (200-1)				Knots 60 90 120 150 180				
S-LOC 6	2560-1 455 (500-1)				Min:Sec 5:06 3:24 2:33 2:02 1:42				
CIRCLING	2620-1 515 (600-1)	2680-1 575 (600-1)	2780-2 675 (700-2)	2780-2 1/4 675 (700-2 1/4)					