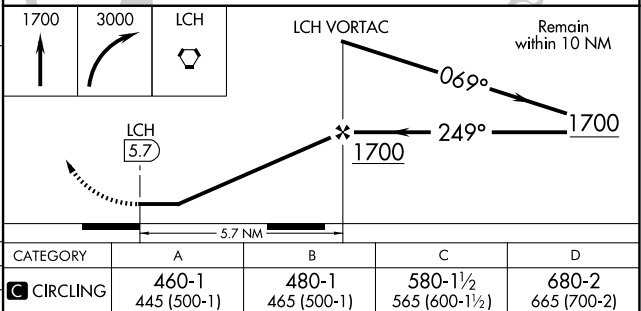
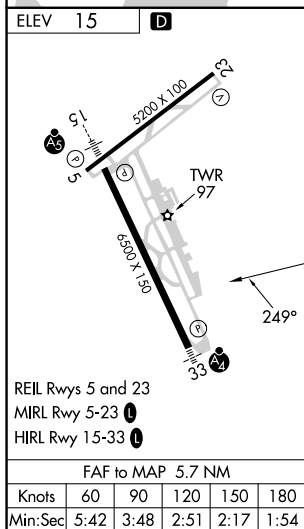
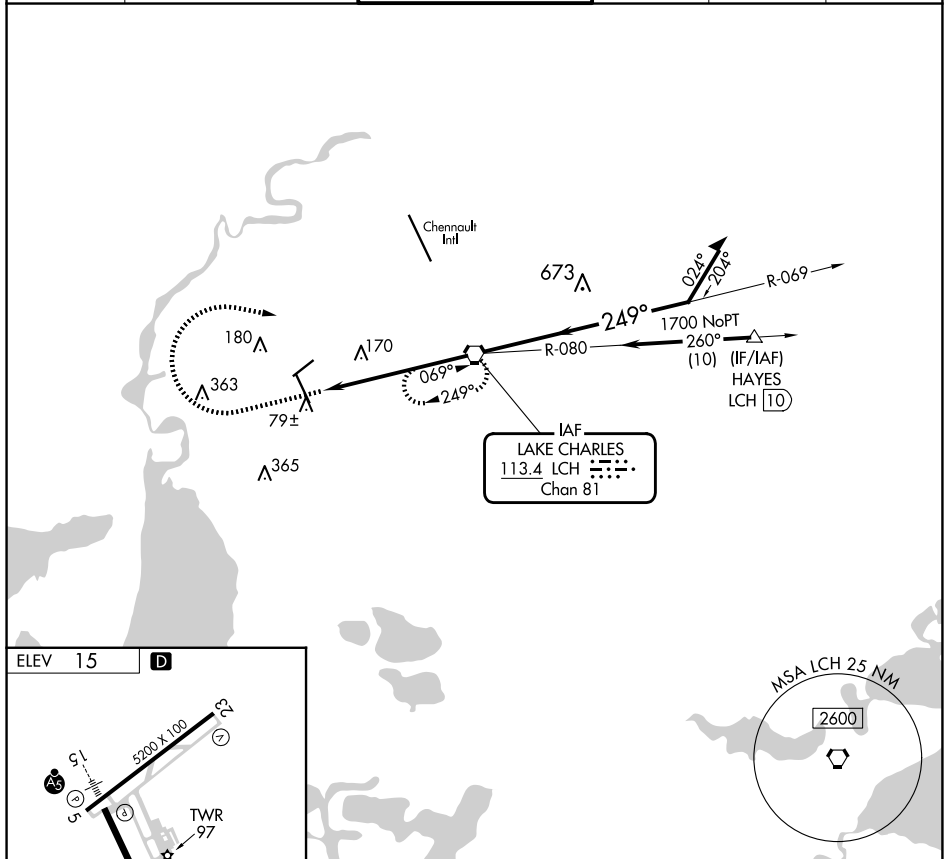


25051

VOR-A
LAKE CHARLES RGNL (LCH)

MISSED APPROACH: Climb to 1700 then climbing right turn to 3000 direct LCH VORTAC and hold, continue climb-in-hold 3000.

ATIS 118.75	LAKE CHARLES APP CON★ 119.35 353.75	LAKE CHARLES TOWER★ 120.7 (CTAF) 0 257.8	GND CON 121.8	CLNC DEL 126.25	UNICOM 122.95
-----------------------	---	--	-------------------------	---------------------------	-------------------------



LAKE CHARLES RGNL (LCH)
VOR-A

SC-4, 07 AUG 2025 to 04 SEP 2025