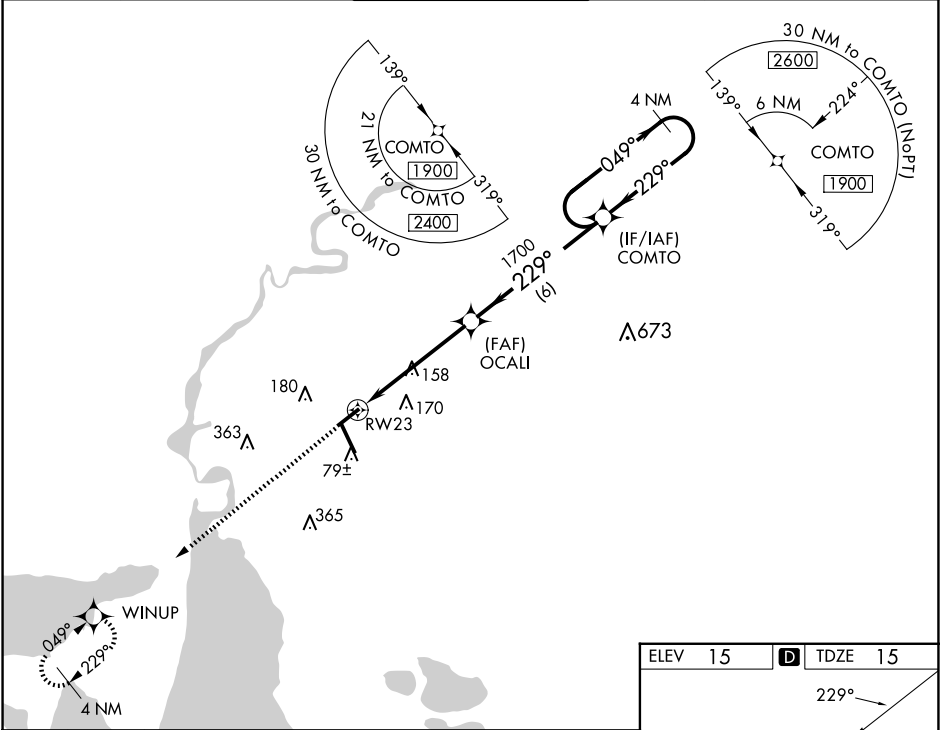


WAAS CH <b>61041</b> <b>W23A</b>	APP CRS <b>229°</b>	Rwy Idg <b>5200</b> TDZE <b>15</b> Apt Elev <b>15</b>
--	------------------------	---

RNAV (GPS) RWY 23

LAKE CHARLES RGNL (LCH)

RNP APCH - GPS.		MISSED APPROACH: Climb to 1700 direct WINUP and hold.	
For uncompensated Baro-VNAV systems, LNAV/VNAV NA below -2°C or above 54°C. Rwy 23 helicopter visibility reduction below ¾ SM NA.			
ATIS <b>118.75</b>	LAKE CHARLES APP CON * <b>119.35 353.75</b>	LAKE CHARLES TOWER * <b>120.7 (CTAF) 0 257.8</b>	GND CON <b>121.8</b>
		CLNC DEL <b>126.25</b>	UNICOM <b>122.95</b>



1700		WINUP	
1.1 NM to RWY 23		1700	
RWY 23		COMTO	
1.1		4 NM	
1700		1900	
1700		GP 3.00°	
1700		TCH 47	
CATEGORY	A	B	C
LPV DA	265-¾	250 (300-¾)	
LNAV/VNAV DA	301-⅞	286 (300-⅞)	
LNAV MDA	420-1	405 (500-1)	420-1½
CIRCLING	440-1	480-1	580-1½
	425 (500-1)	465 (500-1)	565 (600-1½)

