

LOC/DME I-LCH	APP CRS	Rwy Idg
109.1	152°	6500
Chan 28	TDZE	12
	Apt Elev	15

ILS or LOC RWY 15
LAKE CHARLES RGNL (LCH)

ASR

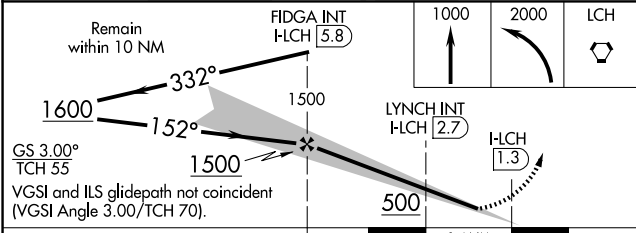
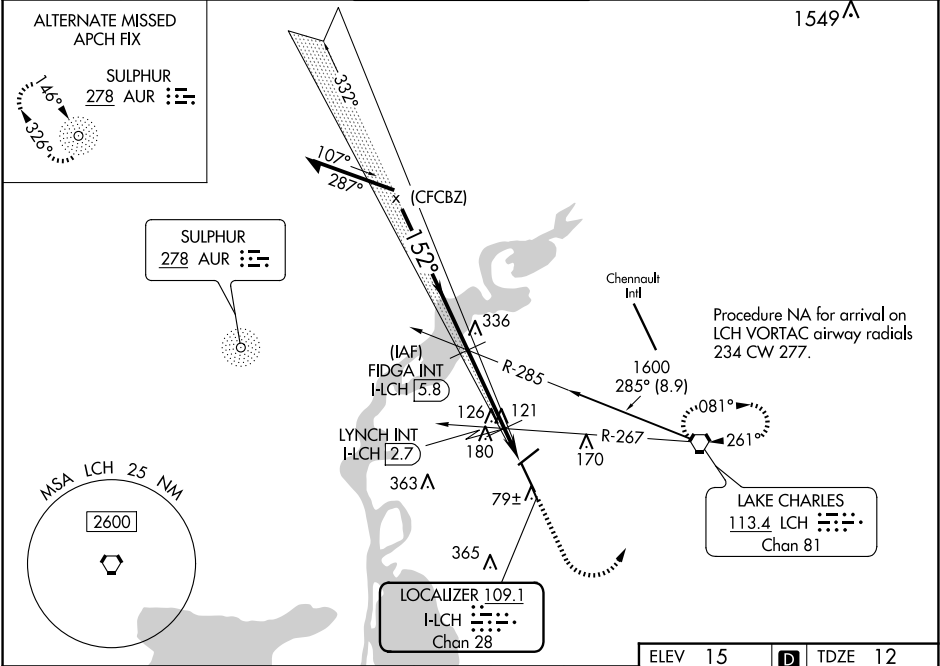
For inop ALS, increase S-LOC 15 Cats C and D visibility to 1½ mile.
* RVR 1800 authorized with use of FD or AP or HUD to DA.

MALSR

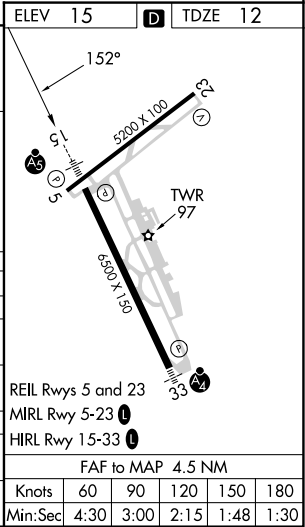
AS

MISSED APPROACH: Climb to 1000 then climbing left turn to 2000 direct LCH VORTAC and hold, continue climb-in-hold to 2000.

ATIS 118.75	LAKE CHARLES APP CON ★ 119.35 353.75	LAKE CHARLES TOWER ★ 120.7 (CTAF) 0 257.8	GND CON 121.8	CLNC DEL 126.25	UNICOM 122.95
----------------	---	--	------------------	--------------------	------------------



CATEGORY	A	B	C	D
S-ILS 15*	212/24 200 (200-½)			
S-LOC 15	500/24	488 (500-½)	500/50	488 (500-1)
CIRCLING	500-1	485 (500-1)	580-1½ 565 (600-1½)	680-2 665 (700-2)
LYNCH FIX MINIMUMS (DUAL VOR RECEIVERS OR DME REQUIRED)				
S-LOC 15	440/24	428 (500-½)	440/40	428 (500-¾)
CIRCLING	440-1 425 (500-1)	480-1 465 (500-1)	580-1½ 565 (600-1½)	680-2 665 (700-2)



SC-4, 07 AUG 2025 to 04 SEP 2025

SC-4, 07 AUG 2025 to 04 SEP 2025