

WAAS CH 53512 W10A	APP CRS 104°	Rwy Ldg TDZE Apt Elev 4001 1057 1074	RNAV (GPS) Z RWY 10 MOUNT WASHINGTON RGNL (HIE')
--	------------------------	--	--

▼

⚠

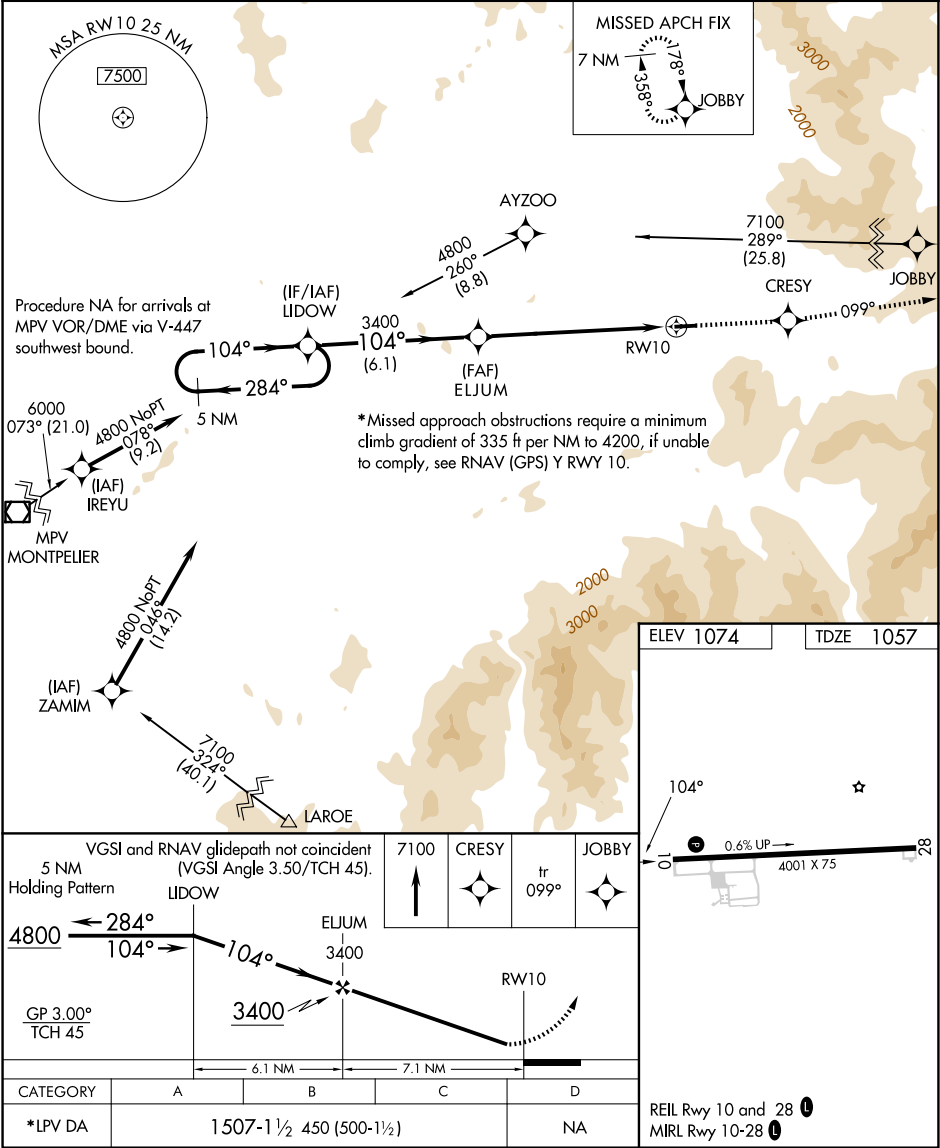
❄

DME/DME RNP-0.3 NA. Visibility reduction by helicopters NA.
When local altimeter setting not received, use Lyndonville altimeter setting and increase DA 71 feet and LPV all Cats visibility ½ mile.

-28°C

MISSED APPROACH: Climb to 7100 direct CRESY and via track 099° to JOBBY and hold, continue track-in-hold to 7100.

ASOS 118.525	BOSTON CENTER 135.7 282.2	UNICOM 122.8 (CTAF) 0
------------------------	-------------------------------------	---------------------------------



NE-1, 07 AUG 2025 to 04 SEP 2025

NE-1, 07 AUG 2025 to 04 SEP 2025