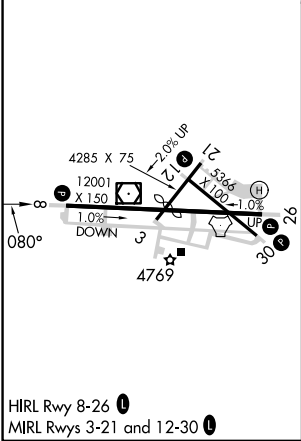
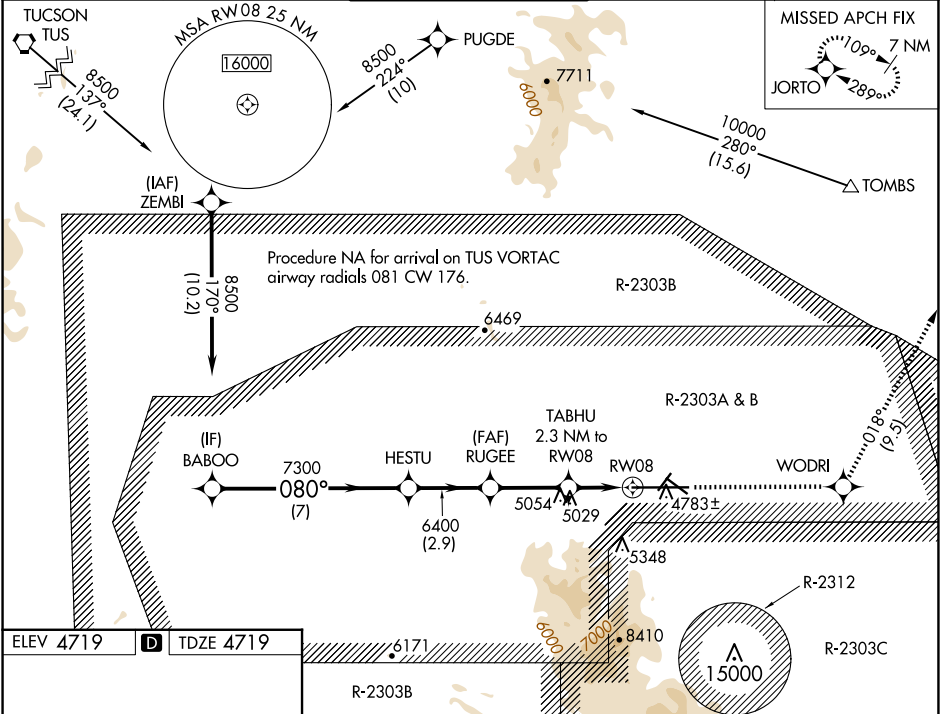


WAAS CH <b>82123</b> <b>W08A</b>	APP CRS <b>080°</b>	Rwy Idg <b>12001</b> TDZE <b>4719</b> Apt Elev <b>4719</b>
--	------------------------	--

RNAV (GPS) RWY 8  
SIERRA VISTA MUNI-LIBBY AAF (FHU)

RNP APCH. Circling NA south of Rwy 8-30. For uncompensated Baro-VNAV systems, LNAV/VNAV NA below -24°C or above 47°C.	MISSED APPROACH: Climb to 9500 direct WODRI and on track 018° to JORTO and hold, continue climb-in-hold to 9500.
--	--

ATIS <b>134.75 263.025</b>	LIBBY AAF GCA★ <b>127.05 254.25</b>	LIBBY TOWER★ <b>124.95 (CTAF) 284.75</b>	GND CON <b>121.7 268.7</b>	UNICOM <b>122.95</b>
-------------------------------	--	---	-------------------------------	-------------------------



VGSI and RNAV glidepath not coincident (VGSI Angle 3.00/TCH 50).				
BABOO	HESTU	RUGEE	TABHU 2.3 NM to RW08	WODRI fr JORTO 018°
*LNAV only				
GP 3.00° TCH 59				
7 NM 2.9 NM 2.8 NM 0.7 NM 1.6 NM				
CATEGORY	A	B	C	D
LPV DA	4919-¾ 200 (200-¾)			
LNAV/VNAV DA	5059-1½ 340 (400-1½)			
LNAV MDA	5280-1 561 (600-1)		5280-1½ 561 (600-1½)	
CIRCLING	5280-1 561 (600-1)		5280-1½ 561 (600-1½)	5280-2 561 (600-2)