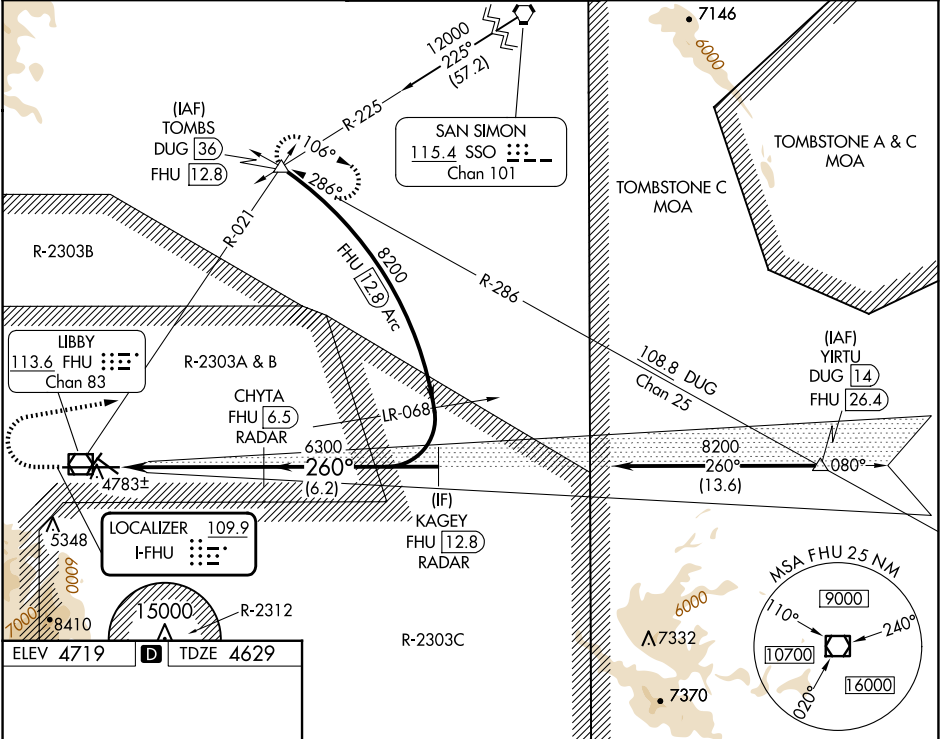


LOC I-FHU	APP CRS	Rwy Idg	12001
109.9	260°	TDZE	4629
		Apt Elev	4719

ILS or LOC RWY 26  
SIERRA VISTA MUNI-LIBBY AAF (FHU)

DME or RADAR required.	MISSED APPROACH: Climb to 5300 then climbing right turn to 9500 on heading 067° and FHU VOR/DME R-021 to TOMBS INT/DUG 36 DME and hold, continue climb-in-hold to 9500.
<div><div>▼</div><div>▲</div></div> <div>Circling NA south of Rwy 8 and 30.</div>	

ATIS	LIBBY AAF GCA*	LIBBY TOWER*	GND CON	UNICOM
134.75 263.025	127.05 254.25	124.95 (CTAF) 0 284.75	121.7 268.7	122.95



5300

9500

FHU R-021

TOMBS

VGSI and ILS glidepath not coincident (VGSI Angle 3.00/TCH 80).

CHYTA FHU 6.5 RADAR

KAGEY FHU 12.8 RADAR

4285 X 75

12001

X 150

3368

100

100

1.0° DOWN

3

4769

260°

26°

30°

FAF to MAP 5.2 NM

Knots

60 90 120 150 180

Min:Sec

5:12 3:28 2:36 2:05 1:44

5300

9500

FHU R-021

TOMBS

VGSI and ILS glidepath not coincident (VGSI Angle 3.00/TCH 80).

CHYTA FHU 6.5 RADAR

KAGEY FHU 12.8 RADAR

5300

9500

FHU R-021

TOMBS

VGSI and ILS glidepath not coincident (VGSI Angle 3.00/TCH 80).

CHYTA FHU 6.5 RADAR

KAGEY FHU 12.8 RADAR

5300

9500

FHU R-021

TOMBS

VGSI and ILS glidepath not coincident (VGSI Angle 3.00/TCH 80).

CHYTA FHU 6.5 RADAR

KAGEY FHU 12.8 RADAR

5300

9500

FHU R-021

TOMBS

VGSI and ILS glidepath not coincident (VGSI Angle 3.00/TCH 80).

CHYTA FHU 6.5 RADAR

KAGEY FHU 12.8 RADAR

5300

9500

FHU R-021

TOMBS

VGSI and ILS glidepath not coincident (VGSI Angle 3.00/TCH 80).

CHYTA FHU 6.5 RADAR

KAGEY FHU 12.8 RADAR

5300

9500

FHU R-021

TOMBS

VGSI and ILS glidepath not coincident (VGSI Angle 3.00/TCH 80).

CHYTA FHU 6.5 RADAR

KAGEY FHU 12.8 RADAR

5300

9500

FHU R-021

TOMBS

VGSI and ILS glidepath not coincident (VGSI Angle 3.00/TCH 80).

CHYTA FHU 6.5 RADAR

KAGEY FHU 12.8 RADAR

5300

9500

FHU R-021

TOMBS

VGSI and ILS glidepath not coincident (VGSI Angle 3.00/TCH 80).

CHYTA FHU 6.5 RADAR

KAGEY FHU 12.8 RADAR

5300

9500

FHU R-021

TOMBS

VGSI and ILS glidepath not coincident (VGSI Angle 3.00/TCH 80).

CHYTA FHU 6.5 RADAR

KAGEY FHU 12.8 RADAR

5300

9500

FHU R-021

TOMBS

VGSI and ILS glidepath not coincident (VGSI Angle 3.00/TCH 80).

CHYTA FHU 6.5 RADAR

KAGEY FHU 12.8 RADAR

5300

9500

FHU R-021

TOMBS

VGSI and ILS glidepath not coincident (VGSI Angle 3.00/TCH 80).

CHYTA FHU 6.5 RADAR

KAGEY FHU 12.8 RADAR

5300

9500

FHU R-021

TOMBS

VGSI and ILS glidepath not coincident (VGSI Angle 3.00/TCH 80).

CHYTA FHU 6.5 RADAR

KAGEY FHU 12.8 RADAR

5300

9500

FHU R-021

TOMBS

VGSI and ILS glidepath not coincident (VGSI Angle 3.00/TCH 80).

CHYTA FHU 6.5 RADAR

KAGEY FHU 12.8 RADAR

5300

9500

FHU R-021

TOMBS

VGSI and ILS glidepath not coincident (VGSI Angle 3.00/TCH 80).

CHYTA FHU 6.5 RADAR

KAGEY FHU 12.8 RADAR

5300

9500

FHU R-021

TOMBS

VGSI and ILS glidepath not coincident (VGSI Angle 3.00/TCH 80).

CHYTA FHU 6.5 RADAR

KAGEY FHU 12.8 RADAR

5300

9500

FHU R-021

TOMBS

VGSI and ILS glidepath not coincident (VGSI Angle 3.00/TCH 80).

CHYTA FHU 6.5 RADAR

KAGEY FHU 12.8 RADAR

5300

9500

FHU R-021

TOMBS

VGSI and ILS glidepath not coincident (VGSI Angle 3.00/TCH 80).

CHYTA FHU 6.5 RADAR

KAGEY FHU 12.8 RADAR

5300

9500

FHU R-021

TOMBS

VGSI and ILS glidepath not coincident (VGSI Angle 3.00/TCH 80).

CHYTA FHU 6.5 RADAR

KAGEY FHU 12.8 RADAR

5300

9500

FHU R-021

TOMBS

VGSI and ILS glidepath not coincident (VGSI Angle 3.00/TCH 80).

CHYTA FHU 6.5 RADAR

KAGEY FHU 12.8 RADAR

5300

9500

FHU R-021

TOMBS

VGSI and ILS glidepath not coincident (VGSI Angle 3.00/TCH 80).

CHYTA FHU 6.5 RADAR

KAGEY FHU 12.8 RADAR

5300

9500

FHU R-021

TOMBS

VGSI and ILS glidepath not coincident (VGSI Angle 3.00/TCH 80).

CHYTA FHU 6.5 RADAR

KAGEY FHU 12.8 RADAR

5300

9500

FHU R-021

TOMBS

VGSI and ILS glidepath not coincident (VGSI Angle 3.00/TCH 80).

CHYTA FHU 6.5 RADAR

KAGEY FHU 12.8 RADAR

5300

9500

FHU R-021

TOMBS

VGSI and ILS glidepath not coincident (VGSI Angle 3.00/TCH 80).

CHYTA FHU 6.5 RADAR

KAGEY FHU 12.8 RADAR

5300

9500

FHU R-021

TOMBS

VGSI and ILS glidepath not coincident (VGSI Angle 3.00/TCH 80).

CHYTA FHU 6.5 RADAR

KAGEY FHU 12.8 RADAR

5300

9500

FHU R-021

TOMBS

VGSI and ILS glidepath not coincident (VGSI Angle 3.00/TCH 80).

CHYTA FHU 6.5 RADAR

KAGEY FHU 12.8 RADAR

5300

9500

FHU R-021

TOMBS

VGSI and ILS glidepath not coincident (VGSI Angle 3.00/TCH 80).

CHYTA FHU 6.5 RADAR

KAGEY FHU 12.8 RADAR

5300

9500

FHU R-021

TOMBS

VGSI and ILS glidepath not coincident (VGSI Angle 3.00/TCH 80).

CHYTA FHU 6.5 RADAR

KAGEY FHU 12.8 RADAR

5300

9500

FHU R-021

TOMBS

VGSI and ILS glidepath not coincident (VGSI Angle 3.00/TCH 80).

CHYTA FHU 6.5 RADAR

KAGEY FHU 12.8 RADAR

5300

9500

FHU R-021

TOMBS

VGSI and ILS glidepath not coincident (VGSI Angle 3.00/TCH 80).

CHYTA FHU 6.5 RADAR

KAGEY FHU 12.8 RADAR

5300

9500

FHU R-021

TOMBS

VGSI and ILS glidepath not coincident (VGSI Angle 3.00/TCH 80).

CHYTA FHU 6.5 RADAR

KAGEY FHU 12.8 RADAR

5300

9500

FHU R-021

TOMBS

VGSI and ILS glidepath not coincident (VGSI Angle 3.00/TCH 80).

CHYTA FHU 6.5 RADAR

KAGEY FHU 12.8 RADAR

5300

9500

FHU R-021

TOMBS

VGSI and ILS glidepath not coincident (VGSI Angle 3.00/TCH 80).

CHYTA FHU 6.5 RADAR

KAGEY FHU 12.8 RADAR

5300

9500

FHU R-021

TOMBS

VGSI and ILS glidepath not coincident (VGSI Angle 3.00/TCH 80).

CHYTA FHU 6.5 RADAR

KAGEY FHU 12.8 RADAR

5300

9500

FHU R-021

TOMBS

VGSI and ILS glidepath not coincident (VGSI Angle 3.00/TCH 80).

CHYTA FHU 6.5 RADAR

KAGEY FHU 12.8 RADAR

5300

9500

FHU R-021

TOMBS

VGSI and ILS glidepath not coincident (VGSI Angle 3.00/TCH 80).

CHYTA FHU 6.5 RADAR

KAGEY FHU 12.8 RADAR

5300

9500

FHU R-021

TOMBS

VGSI and ILS glidepath not coincident (VGSI Angle 3.00/TCH 80).

CHYTA FHU 6.5 RADAR

KAGEY FHU 12.8 RADAR

5300

9500

FHU R-021

TOMBS

VGSI and ILS glidepath not coincident (VGSI Angle 3.00/TCH 80).

CHYTA FHU 6.5 RADAR

KAGEY FHU 12.8 RADAR

5300

9500

FHU R-021

TOMBS

VGSI and ILS glidepath not coincident (VGSI Angle 3.00/TCH 80).

CHYTA FHU 6.5 RADAR

KAGEY FHU 12.8 RADAR

5300

9500

FHU R-021

TOMBS

VGSI and ILS glidepath not coincident (VGSI Angle 3.00/TCH 80).

CHYTA FHU 6.5 RADAR

KAGEY FHU 12.8 RADAR

5300

9500

FHU R-021

TOMBS

VGSI and ILS glidepath not coincident (VGSI Angle 3.00/TCH 80).

CHYTA FHU 6.5 RADAR

KAGEY FHU 12.8 RADAR

5300

9500

FHU R-021

TOMBS

VGSI and ILS glidepath not coincident (VGSI Angle 3.00/TCH 80).

CHYTA FHU 6.5 RADAR

KAGEY FHU 12.8 RADAR

5300

9500

FHU R-021

TOMBS

VGSI and ILS glidepath not coincident (VGSI Angle 3.00/TCH 80).

CHYTA FHU 6.5 RADAR

KAGEY FHU 12.8 RADAR

5300

9500

FHU R-021

TOMBS

VGSI and ILS glidepath not coincident (VGSI Angle 3.00/TCH 80).

CHYTA FHU 6.5 RADAR

KAGEY FHU 12.8 RADAR

5300

9500

FHU R-021

TOMBS

VGSI and ILS glidepath not coincident (VGSI Angle 3.00/TCH 80).

CHYTA FHU 6.5 RADAR

KAGEY FHU 12.8 RADAR

5300

9500

FHU R-021

TOMBS

VGSI and ILS glidepath not coincident (VGSI Angle 3.00/TCH 80).

CHYTA FHU 6.5 RADAR

KAGEY FHU 12.8 RADAR

5300

9500

FHU R-021

TOMBS

VGSI and ILS glidepath not coincident (VGSI Angle 3.00/TCH 80).

CHYTA FHU 6.5 RADAR

KAGEY FHU 12.8 RADAR

5300

9500

FHU R-021

TOMBS

VGSI and ILS glidepath not coincident (VGSI Angle 3.00/TCH 80).

CHYTA FHU 6.5 RADAR

KAGEY FHU 12.8 RADAR

5300

9500

FHU R-021

TOMBS

VGSI and ILS glidepath not coincident (VGSI Angle 3.00/TCH 80).

CHYTA FHU 6.5 RADAR

KAGEY FHU 12.8 RADAR

5300

9500

FHU R-021

TOMBS

VGSI and ILS glidepath not coincident (VGSI Angle 3.00/TCH 80).

CHYTA FHU 6.5 RADAR

KAGEY FHU 12.8 RADAR

5300

9500

FHU R-021

TOMBS

VGSI and ILS glidepath not coincident (VGSI Angle 3.00/TCH 80).

CHYTA FHU 6.5 RADAR

KAGEY FHU 12.8 RADAR

5300

9500

FHU R-021

TOMBS

VGSI and ILS glidepath not coincident (VGSI Angle 3.00/TCH 80).

CHYTA FHU 6.5 RADAR

KAGEY FHU 12.8 RADAR

5300

9500

FHU R-021

TOMBS

VGSI and ILS glidepath not coincident (VGSI Angle 3.00/TCH 80).

CHYTA FHU 6.5 RADAR

KAGEY FHU 12.8 RADAR

5300

9500

FHU R-021

TOMBS

VGSI and ILS glidepath not coincident (VGSI Angle 3.00/TCH 80).

CHYTA FHU 6.5 RADAR

KAGEY FHU 12.8 RADAR

5300

9500

FHU R-021

TOMBS

VGSI and ILS glidepath not coincident (VGSI Angle 3.00/TCH 80).

CHYTA FHU 6.5 RADAR

KAGEY FHU 12.8 RADAR

5300

9500

FHU R-021

TOMBS

VGSI and ILS glidepath not coincident (VGSI Angle 3.00/TCH 80).

CHYTA FHU 6.5 RADAR

KAGEY FHU 12.8 RADAR

5300

9500

FHU R-021

TOMBS

VGSI and ILS glidepath not coincident (VGSI Angle 3.00/TCH 80).

CHYTA FHU 6.5 RADAR

KAGEY FHU 12.8 RADAR

5300

9500

FHU R-021

TOMBS

VGSI and ILS glidepath not coincident (VGSI Angle 3.00/TCH 80).

CHYTA FHU 6.5 RADAR

KAGEY FHU 12.8 RADAR

5300

9500

FHU R-021

TOMBS

VGSI and ILS glidepath not coincident (VGSI Angle 3.00/TCH 80).

CHYTA FHU 6.5 RADAR

KAGEY FHU 12.8 RADAR

5300

9500

FHU R-021

TOMBS

VGSI and ILS glidepath not coincident (VGSI Angle 3.00/TCH 80).

CHYTA FHU 6.5 RADAR

KAGEY FHU 12.8 RADAR

5300

9500

FHU R-021

TOMBS

VGSI and ILS glidepath not coincident (VGSI Angle 3.00/TCH 80).

CHYTA FHU 6.5 RADAR

KAGEY FHU 12.8 RADAR

5300

9500

FHU R-021

TOMBS

VGSI and ILS glidepath not coincident (VGSI Angle 3.00/TCH 80).

CHYTA FHU 6.5 RADAR

KAGEY FHU 12.8 RADAR

5300

9500

FHU R-021

TOMBS

VGSI and ILS glidepath not coincident (VGSI Angle 3.00/TCH 80).

CHYTA FHU 6.5 RADAR

KAGEY FHU 12.8 RADAR

5300

9500

FHU R-021

TOMBS

VGSI and ILS glidepath not coincident (VGSI Angle 3.00/TCH 80).

CHYTA FHU 6.5 RADAR

KAGEY FHU 12.8 RADAR

5300

9500

FHU R-021

TOMBS

VGSI and ILS glidepath not coincident (VGSI Angle 3.00/TCH 80).

CHYTA FHU 6.5 RADAR

KAGEY FHU 12.8 RADAR

5300

9500

FHU R-021

TOMBS

VGSI and ILS glidepath not coincident (VGSI Angle 3.00/TCH 80).

CHYTA FHU 6.5 RADAR

KAGEY FHU 12.8 RADAR

5300

9500

FHU R-021

TOMBS

VGSI and ILS glidepath not coincident (VGSI Angle 3.00/TCH 80).

CHYTA FHU 6.5 RADAR

KAGEY FHU 12.8 RADAR

5300

9500

FHU R-021

TOMBS

VGSI and ILS glidepath not coincident (VGSI Angle 3.00/TCH 80).

CHYTA FHU 6.5 RADAR

KAGEY FHU 12.8 RADAR

5300

9500

FHU R-021

TOMBS

VGSI and ILS glidepath not coincident (VGSI Angle 3.00/TCH 80).

CHYTA FHU 6.5 RADAR

KAGEY FHU 12.8 RADAR

5300

9500

FHU R-021

TOMBS

VGSI and ILS glidepath not coincident (VGSI Angle 3.00/TCH 80).

CHYTA FHU 6.5 RADAR

KAGEY FHU 12.8 RADAR

5300

9500

FHU R-021

TOMBS

VGSI and ILS glidepath not coincident (VGSI Angle 3.00/TCH 80).

CHYTA FHU 6.5 RADAR

KAGEY FHU 12.8 RADAR

5300

9500

FHU R-021

TOMBS

VGSI and ILS glidepath not coincident (VGSI Angle 3.00/TCH 80).

CHYTA FHU 6.5 RADAR

KAGEY FHU 12.8 RADAR

5300

9500

FHU R-021

TOMBS

VGSI and ILS glidepath not coincident (VGSI Angle 3.00/TCH 80).

CHYTA FHU 6.5 RADAR

KAGEY FHU 12.8 RADAR

5300

9500

FHU R-021

TOMBS

VGSI and ILS glidepath not coincident (VGSI Angle 3.00/TCH 80).

CHYTA FHU 6.5 RADAR

KAGEY FHU 12.8 RADAR

5300

9500

FHU R-021

TOMBS

VGSI and ILS glidepath not coincident (VGSI Angle 3.00/TCH 80).

CHYTA FHU 6.5 RADAR

KAGEY FHU 12.8 RADAR

5300

9500

FHU R-021

TOMBS

VGSI and ILS glidepath not coincident (VGSI Angle 3.00/TCH 80).

CHYTA FHU 6.5 RADAR

KAGEY FHU 12.8 RADAR

5300

9500

FHU R-021

TOMBS

VGSI and ILS glidepath not coincident (VGSI Angle 3.00/TCH 80).

CHYTA FHU 6.5 RADAR

KAGEY FHU 12.8 RADAR

5300

9500

FHU R-021

TOMBS

VGSI and ILS glidepath not coincident (VGSI Angle 3.00/TCH 80).

CHYTA FHU 6.5 RADAR

KAGEY FHU 12.8 RADAR

5300

9500

FHU R-021

TOMBS

VGSI and ILS glidepath not coincident (VGSI Angle 3.00/TCH 80).

CHYTA FHU 6.5 RADAR

KAGEY FHU 12.8 RADAR

5300

9500

FHU R-021

TOMBS

VGSI and ILS glidepath not coincident (VGSI Angle 3.00/TCH 80).

CHYTA FHU 6.5 RADAR

KAGEY FHU 12.8 RADAR

5300

9500

FHU R-021

TOMBS

VGSI and ILS glidepath not coincident (VGSI Angle 3.00/TCH 80).

CHYTA FHU 6.5 RADAR

KAGEY FHU 12.8 RADAR

5300

9500

FHU R-021

TOMBS

VGSI and ILS glidepath not coincident (VGSI Angle 3.00/TCH 80).

CHYTA FHU 6.5 RADAR

KAGEY FHU 12.8 RADAR

5300

9500

FHU R-021

TOMBS

VGSI and ILS glidepath not coincident (VGSI Angle 3.00/TCH 80).

CHYTA FHU 6.5 RADAR

KAGEY FHU 12.8 RADAR

5300

9500

FHU R-021

TOMBS

VGSI and ILS glidepath not coincident (VGSI Angle 3.00/TCH 80).

CHYTA FHU 6.5 RADAR

KAGEY FHU 12.8 RADAR

5300

9500

FHU R-021

TOMBS

VGSI and ILS glidepath not coincident (VGSI Angle 3.00/TCH 80).

CHYTA FHU 6.5 RADAR

KAGEY FHU 12.8 RADAR

SW-4, 07 AUG 2025 to 04 SEP 2025

SW-4, 07 AUG 2025 to 04 SEP 2025