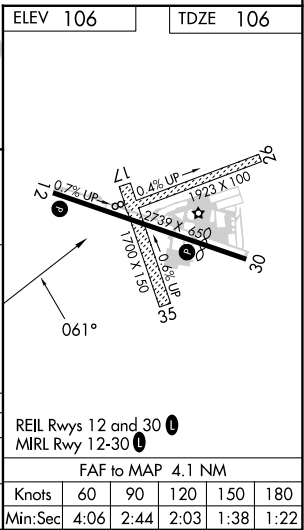
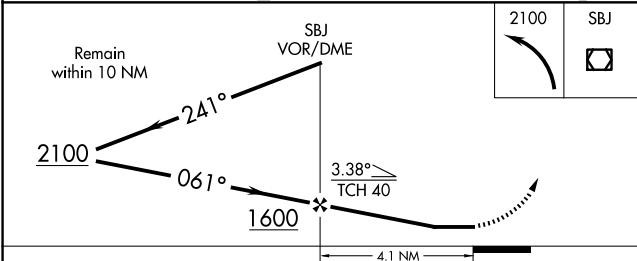
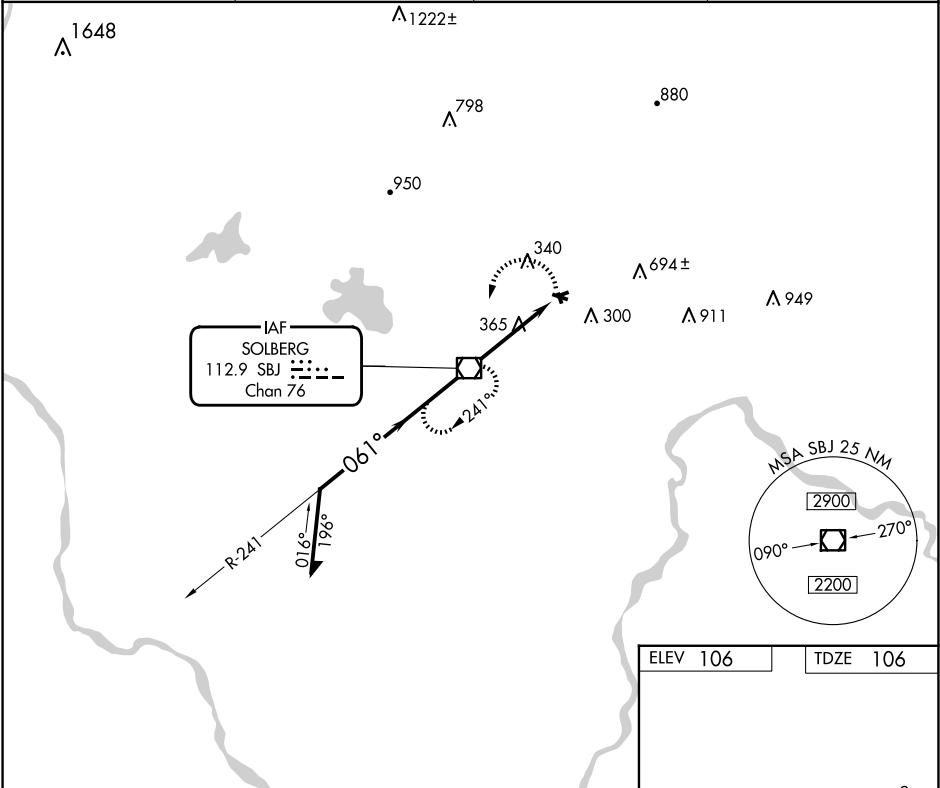


VOR/DME SBJ	APP CRS	Rwy Idg	1923
112.9	061°	TDZE	106
Chan 76		Apt Elev	106

VOR RWY 8

SOMERSET (SMQ)

<div><div>▼</div><div>▲</div></div> <div>Circling Rwy 8, 17, 26, 30 and 35 NA at night. Rwy 8 helicopter visibility reduction below 1 SM NA. Straight-in Rwy 8 NA at night.</div>	MISSED APPROACH: Climbing left turn to 2100 direct SBJ VOR/DME and hold.		
ASOS 120.6	NEWARK APP CON 132.8 379.9	UNICOM 123.0 (CTAF)	118.325 0



NE-2, 07 AUG 2025 to 04 SEP 2025

NE-2, 07 AUG 2025 to 04 SEP 2025