

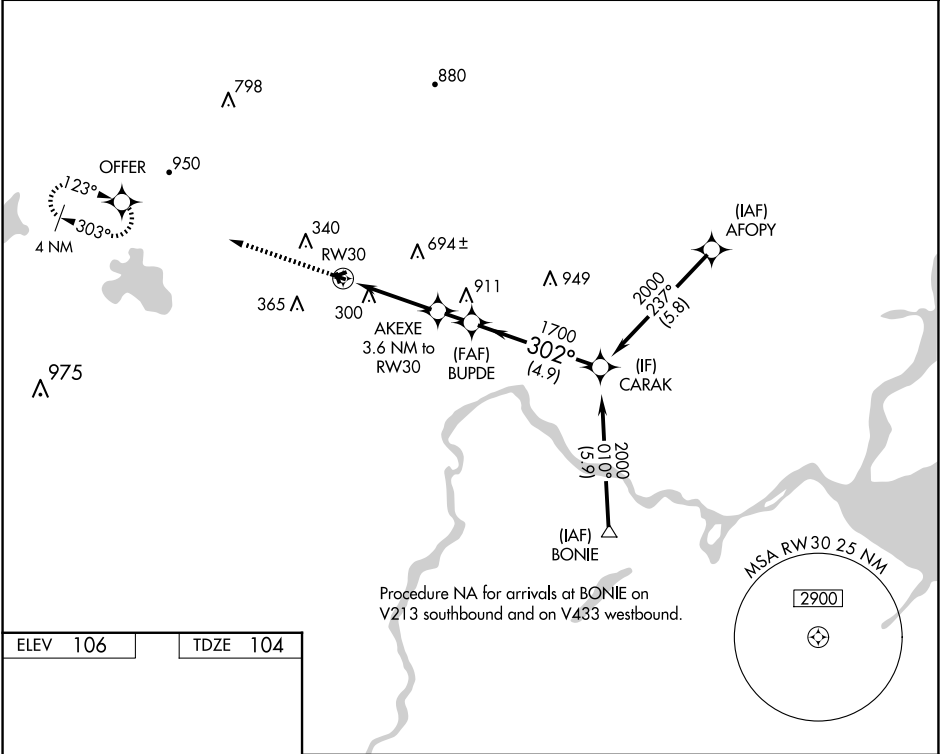
APP CRS	Rwy Idg	2539
302°	TDZE	104
	Apt Elev	106

RNAV (GPS) RWY 30

SOMERSET (SMQ)

RNP APCH - GPS.	MISSED APPROACH: Climb to 2500 direct OFFER and hold.
<div><div>▼</div><div>▲</div></div> <div>Rwy 30 helicopter visibility reduction below 1 SM NA. Circling Rwy 8, 17, 26, 30 and 35 NA at night. Straight-in Rwy 30 NA at night.</div>	

ASOS 120.6	NEWARK APP CON 132.8 379.9	UNICOM 123.0 (CTAF)	118.325 0
---------------	-------------------------------	------------------------	-----------



REIL Rwys 12 and 30
MIRL Rwy 12-30

Visual Segment - Obstacles.

	3.6 NM		1.3 NM	4.9 NM	
CATEGORY	A	B	C	D	
LNAV MDA	960-1 856 (900-1)	960-1¼ 856 (900-1¼)	NA		
C CIRCLING	960-1¼	854 (900-1¼)	NA		