

MERIDIAN, MISSISSIPPI

TACAN Y RWY 1L

TACAN NMM
Chan **56**

APCH CRS
025°

Rwy Idg
TDZE **254**
Arpt Elev **316**

AL-5079 [USN]

MERIDIAN NAS (MC CAIN FIELD) (KNMM)

RADAR required.

ALSF-1

MISSED APPROACH: Climb to 2100 direct NMM TACAN then via R-051 to ROBNY and hold.

ATIS ★
290.525

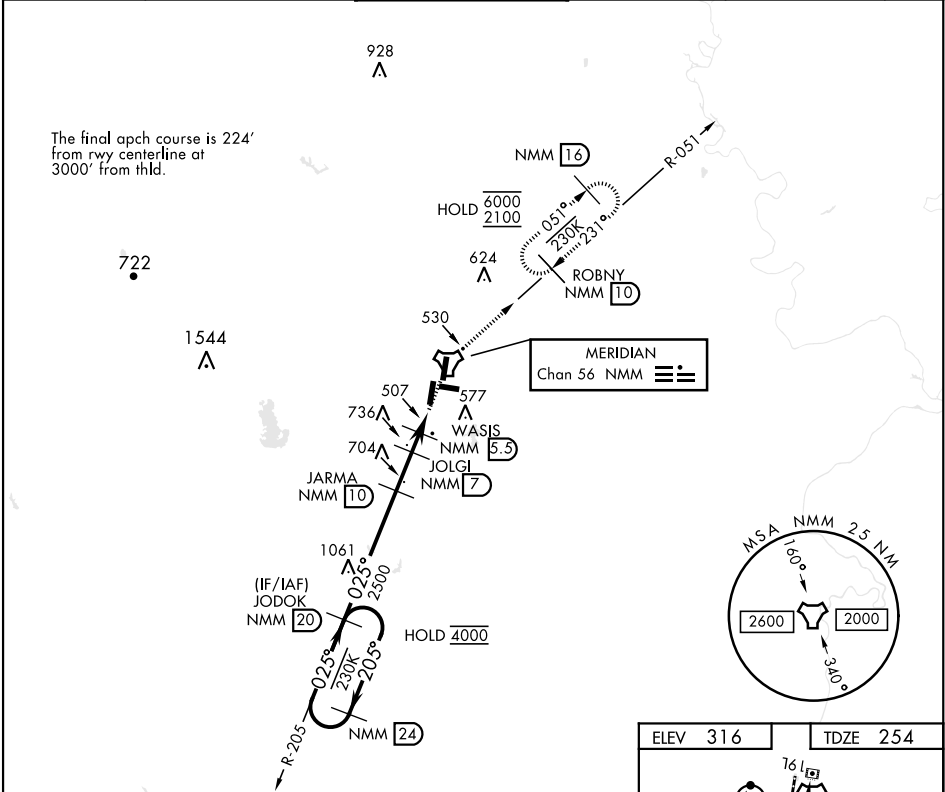
APP CON
120.95 276.4

NAVY MC CAIN TOWER ★
126.2 340.2

GND CON
336.4

CLNC DEL
301.0

ASR/
PAR



EMERG SAFE ALT 100 NM 3700

JODOK (NMM 20)

JARMA (NMM 10)

JOLGI (NMM 7)

WASIS (NMM 5.5)

AGLEY (NMM 3.9)

TACAN

2100 NMM

NMM R-051

CATEGORY	A	B	C	D	E
S-1L *	760-1/2	506 (500-1/2)	760-1	506 (500-1)	
CIRCLING	820-1 504 (600-1)	840-1 524 (600-1)	840-1 1/2 524 (600-1 1/2)	880-2 564 (600-2)	1080-2 3/4 764 (800-2 3/4)

ELEV 316

TDZE 254

TWR 436

1R

1L

025°

Wave-Off Lgt Rwy 1L, 19L
HIRL all rwys

MERIDIAN, MISSISSIPPI 32°33' N -88°33' W MERIDIAN NAS (MC CAIN FIELD) (KNMM)

Amtd 3 08SEP22

TACAN Y RWY 1L

SC-4, 07 AUG 2025 to 04 SEP 2025

SC-4, 07 AUG 2025 to 04 SEP 2025