

MERIDIAN, MISSISSIPPI

RNAV (GPS) RWY 19L

APCH CRS	Rwy Idg	8000
191°	TDZE	316
	Arprt Elev	316

AL-5079 (USN)

MERIDIAN NAS (MC CAIN FLD) (KNMM)

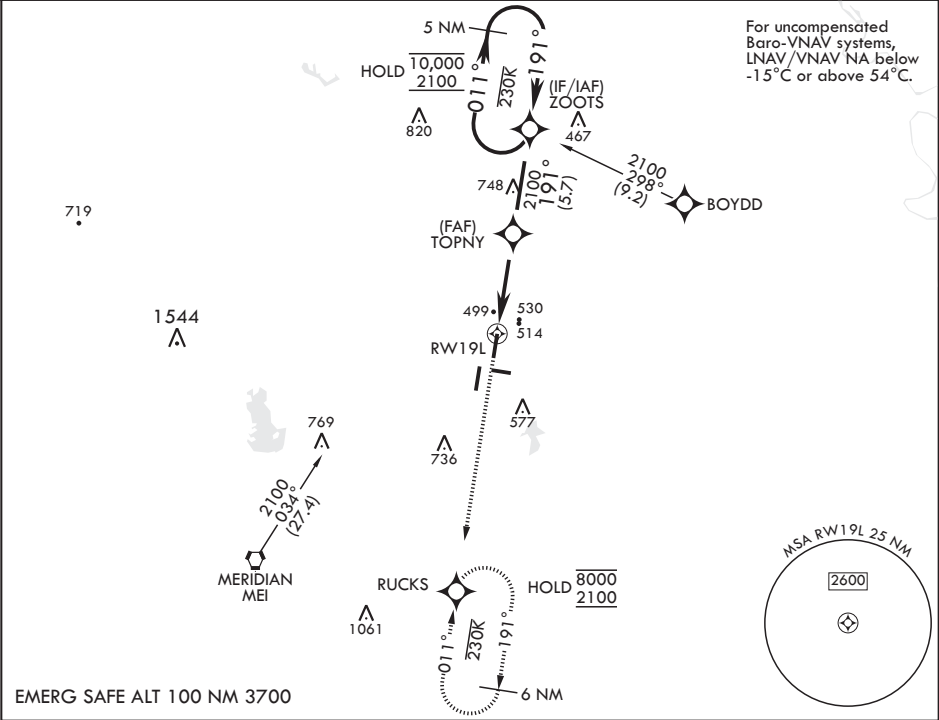
RNP APCH.

▼ * When ALS inop, increase CAT AB vis to 1 mile, increase CAT CDE to 1 3/8 miles.
** When ALS inop, increase vis to 1 3/8 miles.



MISSED APPROACH: Climb to 2100 direct RUCKS and hold.

ATIS★ 290.525	APP CON 120.5 269.325 S 379.275 N 120.95 276.4 W 121.275 348.7 E	MC CAIN TOWER★ 126.2 340.2 RWY 01L, 19L AND 28 126.2 360.2 RWY 01R, 19R AND 10	MC CAIN GND CON 336.4	CLNC DEL 301.0	ASR/PAR
------------------	--	--	--------------------------	-------------------	---------



2100

RUCKS

TOPNY

ZOOT

5 NM holding pattern

10,000/2100

GP 3.00°

TCH 49

CATEGORY	A	B	C	D	E
LNAV/VNAV DA**	800-1		484	(500-1)	
LNAV MDA*	800-½	484 (500-½)	800-1	484	(500-1)
CIRCLING	820-1 504 (600-1)	840-1 524 (600-1)	840-1½ 524 (600-1½)	880-2 564 (600-2)	1080-2¾ 764 (800-2¾)

191°

761

011°

8003 x 200

6402 x 200

861

BCN

01

1L

1R

28

Wave-Off Lights Rwy 1L, 19L

MERIDIAN, MISSISSIPPI

32°33'N - 88°33'W

MERIDIAN NAS (MC CAIN FLD) (KNMM)

Amtr 4 08SEP22

RNAV (GPS) RWY 19L

SC-4, 07 AUG 2025 to 04 SEP 2025

SC-4, 07 AUG 2025 to 04 SEP 2025