
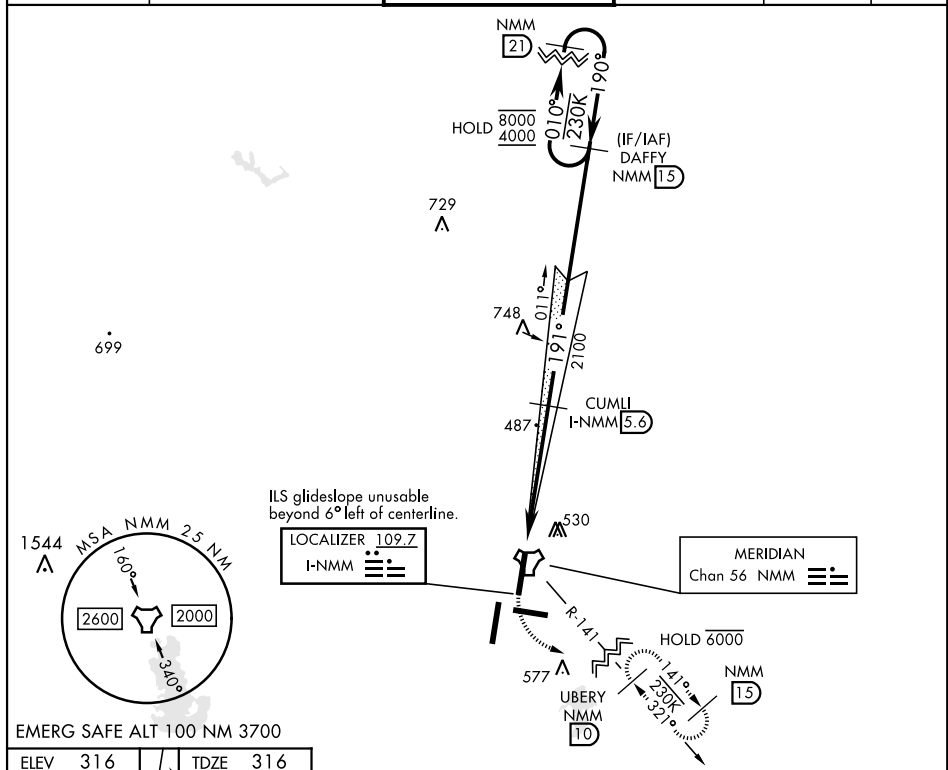


ILS Y or LOC/DME Y RWY 19L

LOC I-NMM 109.7	APCH CRS 191°	Rwy Idg 8000 TDZE 316 Arpt Elev 316	AL-5079 [USN]	MERIDIAN NAS (MC CAIN FIELD) (KNMM)			
RADAR required. ▼ * When ALS inop, increase vis to ¾ mile. ** When ALS inop, increase CAT AB vis to 1 mile, CAT CD vis to 1½ miles.			MALSR 	MISSED APPROACH: Climb to 800, then climbing left turn to 2100 to intercept NMM R-141 to UBERY and hold.			
ATIS ★ 290.525	APP CON 120.95 276.4		NAVY MC CAIN TOWER ★ 126.2 340.2		GND CON 336.4	CLNC DEL 301.0	ASR/PAR



EMERG SAFE ALT 100 NM 3700

ELEV 316 TDZE 316

Diagram of a runway layout showing various navigation aids and dimensions. The layout includes a runway labeled 1L, 19L with a width of 8003 x 200. A taxiway labeled 1R is shown with a width of 6402 x 200. A tower (TWR) is located near the runway. A distance of 76 is marked from the runway to a point labeled A5. A distance of 191 is marked from the runway to a point labeled A1. A distance of 10 is marked from the runway to a point labeled 28. A distance of 8000 x 200 is marked from the runway to a point labeled 161. A distance of 8003 x 200 is marked from the runway to a point labeled 1L. A distance of 6402 x 200 is marked from the runway to a point labeled 28. A distance of 10 is marked from the runway to a point labeled 1R. A distance of 76 is marked from the runway to a point labeled A5. A distance of 191 is marked from the runway to a point labeled A1. A distance of 10 is marked from the runway to a point labeled 28. A distance of 8000 x 200 is marked from the runway to a point labeled 161. A distance of 8003 x 200 is marked from the runway to a point labeled 1L. A distance of 6402 x 200 is marked from the runway to a point labeled 28. A distance of 10 is marked from the runway to a point labeled 1R. A distance of 76 is marked from the runway to a point labeled A5. A distance of 191 is marked from the runway to a point labeled A1. A distance of 10 is marked from the runway to a point labeled 28. A distance of 8000 x 200 is marked from the runway to a point labeled 161. A distance of 8003 x 200 is marked from the runway to a point labeled 1L. A distance of 6402 x 200 is marked from the runway to a point labeled 28. A distance of 10 is marked from the runway to a point labeled 1R. A distance of 76 is marked from the runway to a point labeled A5. A distance of 191 is marked from the runway to a point labeled A1. A distance of 10 is marked from the runway to a point labeled 28. A distance of 8000 x 200 is marked from the runway to a point labeled 161. A distance of 8003 x 200 is marked from the runway to a point labeled 1L. A distance of 6402 x 200 is marked from the runway to a point labeled 28. A distance of 10 is marked from the runway to a point labeled 1R. A distance of 76 is marked from the runway to a point labeled A5. A distance of 191 is marked from the runway to a point labeled A1. A distance of 10 is marked from the runway to a point labeled 28. A distance of 8000 x 200 is marked from the runway to a point labeled 161. A distance of 8003 x 200 is marked from the runway to a point labeled 1L. A distance of 6402 x 200 is marked from the runway to a point labeled 28. A distance of 10 is marked from the runway to a point labeled 1R. A distance of 76 is marked from the runway to a point labeled A5. A distance of 191 is marked from the runway to a point labeled A1. A distance of 10 is marked from the runway to a point labeled 28. A distance of 8000 x 200 is marked from the runway to a point labeled 161. A distance of 8003 x 200 is marked from the runway to a point labeled 1L. A distance of 6402 x 200 is marked from the runway to a point labeled 28. A distance of 10 is marked from the runway to a point labeled 1R. A distance of 76 is marked from the runway to a point labeled A5. A distance of 191 is marked from the runway to a point labeled A1. A distance of 10 is marked from the runway to a point labeled 28. A distance of 8000 x 200 is marked from the runway to a point labeled 161. A distance of 8003 x 200 is marked from the runway to a point labeled 1L. A distance of 6402 x 200 is marked from the runway to a point labeled 28. A distance of 10 is marked from the runway to a point labeled 1R. A distance of 76 is marked from the runway to a point labeled A5. A distance of 191 is marked from the runway to a point labeled A1. A distance of 10 is marked from the runway to a point labeled 28. A distance of 8000 x 200 is marked from the runway to a point labeled 161. A distance of 8003 x 200 is marked from the runway to a point labeled 1L. A distance of 6402 x 200 is marked from the runway to a point labeled 28. A distance of 10 is marked from the runway to a point labeled 1R. A distance of 76 is marked from the runway to a point labeled A5. A distance of 191 is marked from the runway to a point labeled A1. A distance of 10 is marked from the runway to a point labeled 28. A distance of 8000 x 200 is marked from the runway to a point labeled 161. A distance of 8003 x 200 is marked from the runway to a point labeled 1L. A distance of 6402 x 200 is marked from the runway to a point labeled 28. A distance of 10 is marked from the runway to a point labeled 1R. A distance of 76 is marked from the runway to a point labeled A5. A distance of 191 is marked from the runway to a point labeled A1. A distance of 10 is marked from the runway to a point labeled 28. A distance of 8000 x 200 is marked from the runway to a point labeled 161. A distance of 8003 x 200 is marked from the runway to a point labeled 1L. A distance of 6402 x 200 is marked from the runway to a point labeled 28. A distance of 10 is marked from the runway to a point labeled 1R. A distance of 76 is marked from the runway to a point labeled A5. A distance of 191 is marked from the runway to a point labeled A1. A distance of 10 is marked from the runway to a point labeled 28. A distance of 8000 x 200 is marked from the runway to a point labeled 161. A distance of 8003 x 200 is marked from the runway to a point labeled 1L. A distance of 6402 x 200 is marked from the runway to a point labeled 28. A distance of 10 is marked from the runway to a point labeled 1R. A distance of 76 is marked from the runway to a point labeled A5. A distance of 191 is marked from the runway to a point labeled A1. A distance of 10 is marked from the runway to a point labeled 28. A distance of 8000 x 200 is marked from the runway to a point labeled 161. A distance of 8003 x 200 is marked from the runway to a point labeled 1L. A distance of 6402 x 200 is marked from the runway to a point labeled 28. A distance of 10 is marked from the runway to a point labeled 1R. A distance of 76 is marked from the runway to a point labeled A5. A distance of 191 is marked from the runway to a point labeled A1. A distance of 10 is marked from the runway to a point labeled 28. A distance of 8000 x 200 is marked from the runway to a point labeled 161. A distance of 8003 x 200 is marked from the runway to a point labeled 1L. A distance of 6402 x 200 is marked from the runway to a point labeled 28. A distance of 10 is marked from the runway to a point labeled 1R. A distance of 76 is marked from the runway to a point labeled A5. A distance of 191 is marked from the runway to a point labeled A1. A distance of 10 is marked from the runway to a point labeled 28. A distance of 8000 x 200 is marked from the runway to a point labeled 161. A distance of 8003 x 200 is marked from the runway to a point labeled 1L. A distance of 6402 x 200 is marked from the runway to a point labeled 28. A distance of 10 is marked from the runway to a point labeled 1R. A distance of 76 is marked from the runway to a point labeled A5. A distance of 191 is marked from the runway to a point labeled A1. A distance of 10 is marked from the runway to a point labeled 28. A distance of 8000 x 200 is marked from the runway to a point labeled 161. A distance of 8003 x 200 is marked from the runway to a point labeled 1L. A distance of 6402 x 200 is marked from the runway to a point labeled 28. A distance of 10 is marked from the runway to a point labeled 1R. A distance of 76 is marked from the runway to a point labeled A5. A distance of 191 is marked from the runway to a point labeled A1. A distance of 10 is marked from the runway to a point labeled 28. A distance of 8000 x 200 is marked from the runway to a point labeled 161. A distance of 8003 x 200 is marked from the runway to a point labeled 1L. A distance of 6402 x 200 is marked from the runway to a point labeled 28. A distance of 10 is marked from the runway to a point labeled 1R. A distance of 76 is marked from the runway to a point labeled A5. A distance of 191 is marked from the runway to a point labeled A1. A distance of 10 is marked from the runway to a point labeled 28. A distance of 8000 x 200 is marked from the runway to a point labeled 161. A distance of 8003 x 200 is marked from the runway to a point labeled 1L. A distance of 6402 x 200 is marked from the runway to a point labeled 28. A distance of 10 is marked from the runway to a point labeled 1R. A distance of 76 is marked from the runway to a point labeled A5. A distance of 191 is marked from the runway to a point labeled A1. A distance of 10 is marked from the runway to a point labeled 28. A distance of 8000 x 200 is marked from the runway to a point labeled 161. A distance of 8003 x 200 is marked from the runway to a point labeled 1L. A distance of 6402 x 200 is marked from the runway to a point labeled 28. A distance of 10 is marked from the runway to a point labeled 1R. A distance of 76 is marked from the runway to a point labeled A5. A distance of 191 is marked from the runway to a point labeled A1. A distance of 10 is marked from the runway to a point labeled 28. A distance of 8000 x 200 is marked from the runway to a point labeled 161. A distance of 8003 x 200 is marked from the runway to a point labeled 1L. A distance of 6402 x 200 is marked from the runway to a point labeled 28. A distance of 10 is marked from the runway to a point labeled 1R. A distance of 76 is marked from the runway to a point labeled A5. A distance of 191 is marked from the runway to a point labeled A1. A distance of 10 is marked from the runway to a point labeled 28. A distance of 8000 x 200 is marked from the runway to a point labeled 161. A distance of 8003 x 200 is marked from the runway to a point labeled 1L. A distance of 6402 x 200 is marked from the runway to a point labeled 28. A distance of 10 is marked from the runway to a point labeled 1R. A distance of 76 is marked from the runway to a point labeled A5. A distance of 191 is marked from the runway to a point labeled A1. A distance of 10 is marked from the runway to a point labeled 28. A distance of 8000 x 200 is marked from the runway to a point labeled 161. A distance of 8003 x 200 is marked from the runway to a point labeled 1L. A distance of 6402 x 200 is marked from the runway to a point labeled 28. A distance of 10 is marked from the runway to a point labeled 1R. A distance of 76 is marked from the runway to a point labeled A5. A distance of 191 is marked from the runway to a point labeled A1. A distance of 10 is marked from the runway to a point labeled 28. A distance of 8000 x 200 is marked from the runway to a point labeled 161. A distance of 8003 x 200 is marked from the runway to a point labeled 1L. A distance of 6402 x 200 is marked from the runway to a point labeled 28. A distance of 10 is marked from the runway to a point labeled 1R. A distance of 76 is marked from the runway to a point labeled A5. A distance of 191 is marked from the runway to a point labeled A1. A distance of 10 is marked from the runway to a point labeled 28. A distance of 8000 x 200 is marked from the runway to a point labeled 161. A distance of 8003 x 200 is marked from the runway to a point labeled 1L. A distance of 6402 x 200 is marked from the runway to a point labeled 28. A distance of 10 is marked from the runway to a point labeled 1R. A distance of 76 is marked from the runway to a point labeled A5. A distance of 191 is marked from the runway to a point labeled A1. A distance of 10 is marked from the runway to a point labeled 28. A distance of 8000 x 200 is marked from the runway to a point labeled 161. A distance of 8003 x 200 is marked from the runway to a point labeled 1L. A distance of 6402 x 200 is marked from the runway to a point labeled 28. A distance of 10 is marked from the runway to a point labeled 1R. A distance of 76 is marked from the runway to a point labeled A5. A distance of 191 is marked from the runway to a point labeled A1. A distance of 10 is marked from the runway to a point labeled 28. A distance of 8000 x 200 is marked from the runway to a point labeled 161. A distance of 8003 x 200 is marked from the runway to a point labeled 1L. A distance of 6402 x 200 is marked from the runway to a point labeled 28. A distance of 10 is marked from the runway to a point labeled 1R. A distance of 76 is marked from the runway to a point labeled A5. A distance of 191 is marked from the runway to a point labeled A1. A distance of 10 is marked from the runway to a point labeled 28. A distance of 8000 x 200 is marked from the runway to a point labeled 161. A distance of 8003 x 200 is marked from the runway to a point labeled 1L. A distance of 6402 x 200 is marked from the runway to a point labeled 28. A distance of 10 is marked from the runway to a point labeled 1R. A distance of 76 is marked from the runway to a point labeled A5. A distance of 191 is marked from the runway to a point labeled A1. A distance of 10 is marked from the runway to a point labeled 28. A distance of 8000 x 200 is marked from the runway to a point labeled 161. A distance of 8003 x 200 is marked from the runway to a point labeled 1L. A distance of 6402 x 200 is marked from the runway to a point labeled 28. A distance of 10 is marked from the runway to a point labeled 1R. A distance of 76 is marked from the runway to a point labeled A5. A distance of 191 is marked from the runway to a point labeled A1. A distance of 10 is marked from the runway to a point labeled 28. A distance of 8000 x 200 is marked from the runway to a point labeled 161. A distance of 8003 x 200 is marked from the runway to a point labeled 1L. A distance of 6402 x 200 is marked from the runway to a point labeled 28. A distance of 10 is marked from the runway to a point labeled 1R. A distance of 76 is marked from the runway to a point labeled A5. A distance of 191 is marked from the runway to a point labeled A1. A distance of 10 is marked from the runway to a point labeled 28. A distance of 8000 x 200 is marked from the runway to a point labeled 161. A distance of 8003 x 200 is marked from the runway to a point labeled 1L. A distance of 6402 x 200 is marked from the runway to a point labeled 28. A distance of 10 is marked from the runway to a point labeled 1R. A distance of 76 is marked from the runway to a point labeled A5. A distance of 191 is marked from the runway to a point labeled A1. A distance of 10 is marked from the runway to a point labeled 28. A distance of 8000 x 200 is marked from the runway to a point labeled 161. A distance of 8003 x 200 is marked from the runway to a point labeled 1L. A distance of 6402 x 200 is marked from the runway to a point labeled 28. A distance of 10 is marked from the runway to a point labeled 1R. A distance of 76 is marked from the runway to a point labeled A5. A distance of 191 is marked from the runway to a point labeled A1. A distance of 10 is marked from the runway to a point labeled 28. A distance of 8000 x 200 is marked from the runway to a point labeled 161. A distance of 8003 x 200 is marked from the runway to a point labeled 1L. A distance of 6402 x 200 is marked from the runway to a point labeled 28. A distance of 10 is marked from the runway to a point labeled 1R. A distance of 76 is marked from the runway to a point labeled A5. A distance of 191 is marked from the runway to a point labeled A1. A distance of 10 is marked from the runway to a point labeled 28. A distance of 8000 x 200 is marked from the runway to a point labeled 161. A distance of 8003 x 200 is marked from the runway to a point labeled 1L. A distance of 6402 x 200 is marked from the runway to a point labeled 28. A distance of 10 is marked from the runway to a point labeled 1R. A distance of 76 is marked from the runway to a point labeled A5. A distance of 191 is marked from the runway to a point labeled A1. A distance of 10 is marked from the runway to a point labeled 28. A distance of 8000 x 200 is marked from the runway to a point labeled 161. A distance of 8003 x 200 is marked from the runway to a point labeled 1L. A distance of 6402 x 200 is marked from the runway to a point labeled 28. A distance of 10 is marked from the runway to a point labeled 1R. A distance of 76 is marked from the runway to a point labeled A5. A distance of 191 is marked from the runway to a point labeled A1. A distance of 10 is marked from the runway to a point labeled 28. A distance of 8000 x 200 is marked from the runway to a point labeled 161. A distance of 8003 x 200 is marked from the runway to a point labeled 1L. A distance of 6402 x 200 is marked from the runway to a point labeled 28. A distance of 10 is marked from the runway to a point labeled 1R. A distance of 76 is marked from the runway to a point labeled A5. A distance of 191 is marked from the runway to a point labeled A1. A distance of 10 is marked from the runway to a point labeled 28. A distance of 8000 x 200 is marked from the runway to a point labeled 161. A distance of 8003 x 200 is marked from the runway to a point labeled 1L. A distance of 6402 x 200 is marked from the runway to a point labeled 28. A distance of 10 is marked from the runway to a point labeled 1R. A distance of 76 is marked from the runway to a point labeled A5. A distance of 191 is marked from the runway to a point labeled A1. A distance of 10 is marked from the runway to a point labeled 28. A distance of 8000 x 200 is marked from the runway to a point labeled 161. A distance of 8003 x 200 is marked from the runway to a point labeled 1L. A distance of 6402 x 200 is marked from the runway to a point labeled 28. A distance of 10 is marked from the runway to a point labeled 1R. A distance of 76 is marked from the runway to a point labeled A5. A distance of 191 is marked from the runway to a point labeled A1. A distance of 10 is marked from the runway to a point labeled 28. A distance of 8000 x 200 is marked from the runway to a point labeled 161. A distance of 8003 x 200 is marked from the runway to a point labeled 1L. A distance of 6402 x 200 is marked from the runway to a point labeled 28. A distance of 10 is marked from the runway to a point labeled 1R. A distance of 76 is marked from the runway to a point labeled A5. A distance of 191 is marked from the runway to a point labeled A1. A distance of 10 is marked from the runway to a point labeled 28. A distance of 8000 x 200 is marked from the runway to a point labeled 161. A distance of 8003 x 200 is marked from the runway to a point labeled 1L. A distance of 6402 x 200 is marked from the runway to a point labeled 28. A distance of 10 is marked from the runway to a point labeled 1R. A distance of 76 is marked from the runway to a point labeled A5. A distance of 191 is marked from the runway to a point labeled A1. A distance of 10 is marked from the runway to a point labeled 28. A distance of 8000 x 200 is marked from the runway to a point labeled 161. A distance of 8003 x 200 is marked from the runway to a point labeled 1L. A distance of 6402 x 200 is marked from the runway to a point labeled 28. A distance of 10 is marked from the runway to a point labeled 1R. A distance of 76 is marked from the runway to a point labeled A5. A distance of 191 is marked from the runway to a point labeled A1. A distance of 10 is marked from the runway to a point labeled 28. A distance of 8000 x 200 is marked from the runway to a point labeled 161. A distance of 8003 x 200 is marked from the runway to a point labeled 1L. A distance of 6402 x 200 is marked from the runway to a point labeled 28. A distance of 10 is marked from the runway to a point labeled 1R. A distance of 76 is marked from the runway to a point labeled A5. A distance of 191 is marked from the runway to a point labeled A1. A distance of 10 is marked from the runway to a point labeled 28. A distance of 8000 x 200 is marked from the runway to a point labeled 161. A distance of 8003 x 200 is marked from the runway to a point labeled 1L. A distance of 6402 x 200 is marked from the runway to a point labeled 28. A distance of 10 is marked from the runway to a point labeled 1R. A distance of 76 is marked from the runway to a point labeled A5. A distance of 191 is marked from the runway to a point labeled A1. A distance of 10 is marked from the runway to a point labeled 28. A distance of 8000 x 200 is marked from the runway to a point labeled 161. A distance of 8003 x 200 is marked from the runway to a point labeled 1L. A distance of 6402 x 200 is marked from the runway to a point labeled 28. A distance of 10 is marked from the runway to a point labeled 1R. A distance of 76 is marked from the runway to a point labeled A5. A distance of 191 is marked from the runway to a point labeled A1. A distance of 10 is marked from the runway to a point labeled 28. A distance of 8000 x 200 is marked from the runway to a point labeled 161. A distance of 8003 x 200 is marked from the runway to a point labeled 1L. A distance of 6402 x 200 is marked from the runway to a point labeled 28. A distance of 10 is marked from the runway to a point labeled 1R. A distance of 76 is marked from the runway to a point labeled A5. A distance of 191 is marked from the runway to a point labeled A1. A distance of 10 is marked from the runway to a point labeled 28. A distance of 8000 x 200 is marked from the runway to a point labeled 161. A distance of 8003 x 200 is marked from the runway to a point labeled 1L. A distance of 6402 x 200 is marked from the runway to a point labeled 28. A distance of 10 is marked from the runway to a point labeled 1R. A distance of 76 is marked from the runway to a point labeled A5. A distance of 191 is marked from the runway to a point labeled A1. A distance of 10 is marked from the runway to a point labeled 28. A distance of 8000 x 200 is marked from the runway to a point labeled 161. A distance of 8003 x 200 is marked from the runway to a point labeled 1L. A distance of 6402 x 200 is marked from the runway to a point labeled 28. A distance of 10 is marked from the runway to a point labeled 1R. A distance of 76 is marked from the runway to a point labeled A5. A distance of 191 is marked from the runway to a point labeled A1. A distance of 10 is marked from the runway to a point labeled 28. A distance of 8000 x 200 is marked from the runway to a point labeled 161. A distance of 8003 x 200 is marked from the runway to a point labeled 1L. A distance of 6402 x 200 is marked from the runway to a point labeled 28. A distance of 10 is marked from the runway to a point labeled 1R. A distance of 76 is marked from the runway to a point labeled A5. A distance of 191 is marked from the runway to a point labeled A1. A distance of 10 is marked from the runway to a point labeled 28. A distance of 8000 x 200 is marked from the runway to a point labeled 161. A distance of 8003 x 200 is marked from the runway to a point labeled 1L. A distance of 6402 x 200 is marked from the runway to a point labeled 28. A distance of 10 is marked from the runway to a point labeled 1R. A distance of 76 is marked from the runway to a point labeled A5. A distance of 191 is marked from the runway to a point labeled A1. A distance of 10 is marked from the runway to a point labeled 28. A distance of 8000 x 200 is marked from the runway to a point labeled 161. A distance of 8003 x 200 is marked from the runway to a point labeled 1L. A distance of 6402 x 200 is marked from the runway to a point labeled 28. A distance of 10 is marked from the runway to a point labeled 1R. A distance of 76 is marked from the runway to a point labeled A5. A distance of 191 is marked from the runway to a point labeled A1. A distance of 10 is marked from the runway to a point labeled 28. A distance of 8000 x 200 is marked from the runway to a point labeled 161. A distance of 8003 x 200 is marked from the runway to a point labeled 1L. A distance of 6402 x 200 is marked from the runway to a point labeled 28. A distance of 10 is marked from the runway to a point labeled 1R. A distance of 76 is marked from the runway to a point labeled A5. A distance of 191 is marked from the runway to a point labeled A1. A distance of 10 is marked from the runway to a point labeled 28. A distance of 8000 x 200 is marked from the runway to a point labeled 161. A distance of 8003 x 200 is marked from the runway to a point labeled 1L. A distance of 6402 x 200 is marked from the runway to a point labeled 28. A distance of 10 is marked from the runway to a point labeled 1R. A distance of 76 is marked from the runway to a point labeled A5. A distance of 191 is marked from the runway to a point labeled A1. A distance of 10 is marked from the runway to a point labeled 28. A distance of 8000 x 200 is marked from the runway to a point labeled 161. A distance of 8003 x 200 is marked from the runway to a point labeled 1L. A distance of 6402 x 200 is marked from the runway to a point labeled 28. A distance of 10 is marked from the runway to a point labeled 1R. A distance of 76 is marked from the runway to a point labeled A5. A distance of 191 is marked from the runway to a point labeled A1. A distance of 10 is marked from the runway to a point labeled 28. A distance of 8000 x 200 is marked from the runway to a point labeled 161. A distance of 8003 x 200 is marked from the runway to a point labeled 1L. A distance of 6402 x 200 is marked from the runway to a point labeled 28. A distance of 10 is marked from the runway to a point labeled 1R. A distance of 76 is marked from the runway to a point labeled A5. A distance of 191 is marked from the runway to a point labeled A1. A distance of 10 is marked from the runway to a point labeled 28. A distance of 8000 x 200 is marked from the runway to a point labeled 161. A distance of 8003 x 200 is marked from the runway to a point labeled 1L. A distance of 6402 x 200 is marked from the runway to a point labeled 28. A distance of 10 is marked from the runway to a point labeled 1R. A distance of 76 is marked from the runway to a point labeled A5. A distance of 191 is marked from the runway to a point labeled A1. A distance of 10 is marked from the runway to a point labeled 28. A distance of 8000 x 200 is marked from the runway to a point labeled 161. A distance of 8003 x 200 is marked from the runway to a point labeled 1L. A distance of 6402 x 200 is marked from the runway to a point labeled 28. A distance of 10 is marked from the runway to a point labeled 1R. A distance of 76 is marked from the runway to a point labeled A5. A distance of 191 is marked from the runway to a point labeled A1. A distance of 10 is marked from the runway to a point labeled 28. A distance of 8000 x 200 is marked from the runway to a point labeled 161. A distance of 8003 x 200 is marked from the runway to a point labeled 1L. A distance of 6402 x 200 is marked from the runway to a point labeled 28. A distance of 10 is marked from the runway to a point labeled 1R. A distance of 76 is marked from the runway to a point labeled A5. A distance of 191 is marked from the runway to a point labeled A1. A distance of 10 is marked from the runway to a point labeled 28. A distance of 8000 x 200 is marked from the runway to a point labeled 161. A distance of 8003 x 200 is marked from the runway to a point labeled 1L. A distance of 6402 x 200 is marked from the runway to a point labeled 28. A distance of 10 is marked from the runway to a point labeled 1R. A distance of 76 is marked from the runway to a point labeled A5. A distance of 191 is marked from the runway to a point labeled A1. A distance of 10 is marked from the runway to a point labeled 28. A distance of 8000 x 200 is marked from the runway to a point labeled 161. A distance of 8003 x 200 is marked from the runway to a point labeled 1L. A distance of 6402 x 200 is marked from the runway to a point labeled 28. A distance of 10 is marked from the runway to a point labeled 1R. A distance of 76 is marked from the runway to a point labeled A5. A distance of 191 is marked from the runway to a point labeled A1. A distance of 10 is marked from the runway to a point labeled 28. A distance of 8000 x 200 is marked from the runway to a point labeled 161. A distance of 8003 x 200 is marked from the runway to a point labeled 1L. A distance of 6402 x 200 is marked from the runway to a point labeled 28. A distance of 10 is marked from the runway to a point labeled 1R. A distance of 76 is marked from the runway to a point labeled A5. A distance of 191 is marked from the runway to a point labeled A1. A distance of 10 is marked from the runway to a point labeled 28. A distance of 8000 x 200 is marked from the runway to a point labeled 161. A distance of 8003 x 200 is marked from the runway to a point labeled 1L. A distance of 6402 x 200 is marked from the runway to a point labeled 28. A distance of 10 is marked from the runway to a point labeled 1R. A distance of 76 is marked from the runway to a point labeled A5. A distance of 191 is marked from the runway to a point labeled A1. A distance of 10 is marked from the runway to a point labeled 28. A distance of 8000 x 200 is marked from the runway to a point labeled 161. A distance of 8003 x 200 is marked from the runway to a point labeled 1L. A distance of 6402 x 200 is marked from the runway to a point labeled 28. A distance of 10 is marked from the runway to a point labeled 1R. A distance of 76 is marked from the runway to a point labeled A5. A distance of 191 is marked from the runway to a point labeled A1. A distance of 10 is marked from the runway to a point labeled 28. A distance of 8000 x 200 is marked from the runway to a point labeled 161. A distance of 8003 x 200 is marked from the runway to a point labeled 1L. A distance of 6402 x 200 is marked from the runway to a point labeled 28. A distance of 10 is marked from the runway to a point labeled 1R. A distance of 76 is marked from the runway to a point labeled A5. A distance of 191 is marked from the runway to a point labeled A1. A distance of 10 is marked from the runway to a point labeled 28. A distance of 8000 x 200 is marked from the runway to a point labeled 161. A distance of 8003 x 200 is marked from the runway to a point labeled 1L. A distance of 6402 x 200 is marked from the runway to a point labeled 28. A distance of 10 is marked from the runway to a point labeled 1R. A distance of 76 is marked from the runway to a point labeled A5. A distance of 191 is marked from the runway to a point labeled A1. A distance of 10 is marked from the runway to a point labeled 28. A distance of 8000 x 200 is marked from the runway to a point labeled 161. A distance of 8003 x 200 is marked from the runway to a point labeled 1L. A distance of 6402 x 200 is marked from the runway to a point labeled 28. A distance of 10 is marked from the runway to a point labeled 1R. A distance of 76 is marked from the runway to a point labeled A5. A distance of 191 is marked from the runway to a point labeled A1. A distance of 10 is marked from the runway to a point labeled 28. A distance of 8000 x 200 is marked from the runway to a point labeled 161. A distance of 8003 x 200 is marked from the runway to a point labeled 1L. A distance of 6402 x 200 is marked from the runway to a point labeled 28. A distance of 10 is marked from the runway to a point labeled 1R. A distance of 76 is marked from the runway to a point labeled A5. A distance of 191 is marked from the runway to a point labeled A1. A distance of 10 is marked from the runway to a point labeled 28. A distance of 8000 x 200 is marked from the runway to a point labeled 161. A distance of 8003 x 200 is marked from the runway to a point labeled 1L. A distance of 6402 x 200 is marked from the runway to a point labeled 28. A distance of 10 is marked from the runway to a point labeled 1R. A distance of 76 is marked from the runway to a point labeled A5. A distance of 191 is marked from the runway to a point labeled A1. A distance of 10 is marked from the runway to a point labeled 28. A distance of 8000 x 200 is marked from the runway to a point labeled 161. A distance of 8003 x 200 is marked from the runway to a point labeled 1L. A distance of 6402 x 200 is marked from the runway to a point labeled 28. A distance of 10 is marked from the runway to a point labeled 1R. A distance of 76 is marked from the runway to a point labeled A5. A distance of 191 is marked from the runway to a point labeled A1. A distance of 10 is marked from the runway to a point labeled 28. A distance of 8000 x 200 is marked from the runway to a point labeled 161. A distance of 8003 x 200 is marked from the runway to a point labeled 1L. A distance of 6402 x 200 is marked from the runway to a point labeled 28. A distance of 10 is marked from the runway to a point labeled 1R. A distance of 76 is marked from the runway to a point labeled A5. A distance of 191 is marked from the runway to a point labeled A1. A distance of 10 is marked from the runway to a point labeled 28. A distance of 8000 x 200 is marked from the runway to a point labeled 161. A distance of 8003 x 200 is marked from the runway to a point labeled 1L. A distance of 6402 x 200 is marked from the runway to a point labeled 28. A distance of 10 is marked from the runway to a point labeled 1R. A distance of 76 is marked from the runway to a point labeled A5. A distance of 191 is marked from the runway to a point labeled A1. A distance of 10 is marked from the runway to a point labeled 28. A distance of 8000 x 200 is marked from the runway to a point labeled 161. A distance of 8003 x 200 is marked from the runway to a point labeled 1L. A distance of 6402 x 200 is marked from the runway to a point labeled 28. A distance of 10 is marked from the runway to a point labeled 1R. A distance of 76 is marked from the runway to a point labeled A5. A distance of 191 is marked from the runway to a point labeled A1. A distance of 10 is marked from the runway to a point labeled 28. A distance of 8000 x 200 is marked from the runway to a point labeled 161. A distance of 8003 x 200 is marked from the runway to a point labeled 1L. A distance of 6402 x 200 is marked from the runway to a point labeled 28. A distance of 10 is marked from the runway to a point labeled 1R. A distance of 76 is marked from the runway to a point labeled A5. A distance of 191 is marked from the runway to a point labeled A1. A distance of 10 is marked from the runway to a point labeled 28. A distance of 8000 x 200 is marked from the runway to a point labeled 161. A distance of 8003 x 200 is marked from the runway to a point labeled 1L. A distance of 6402 x 200 is marked from the runway to a point labeled 28. A distance of 10 is marked from the runway to a point labeled 1R. A distance of 76 is marked from the runway to a point labeled A5. A distance of 191 is marked from the runway to a point labeled A1. A distance of 10 is marked from the runway to a point labeled 28. A distance of 8000 x 200 is marked from the runway to a point labeled 161. A distance of 8003 x 200 is marked from the runway to a point labeled 1L. A distance of 6402 x 200 is marked from the runway to a point labeled 28. A distance of 10 is marked from the runway to a point labeled 1R. A distance of 76 is marked from the runway to a point labeled A5. A distance of 191 is marked from the runway to a point labeled A1. A distance of 10 is marked from the runway to a point labeled 28. A distance of 8000 x 200 is marked from the runway to a point labeled 161. A distance of 8003 x 200 is marked from the runway to a point labeled 1L. A distance of 6402 x 200 is marked from the runway to a point labeled 28. A distance of 10 is marked from the runway to a point labeled 1R. A distance of 76 is marked from the runway to a point labeled A5. A distance of 191 is marked from the runway to a point labeled A1. A distance of 10 is marked from the runway to a point labeled 28. A distance of 8000 x 200 is marked from the runway to a point labeled 161. A distance of 8003 x 200 is marked from the runway to a point labeled 1L. A distance of 6402 x 200 is marked from the runway to a point labeled 28. A distance of 10 is marked from the runway to a point labeled 1R. A distance of 76 is marked from the runway to a point labeled A5. A distance of 191 is marked from the runway to a point labeled A1. A distance of 10 is marked from the runway to a point labeled 28. A distance of 8000 x 200 is marked from the runway to a point labeled 161. A distance of 8003 x 200 is marked from the runway to a point labeled 1L. A distance of 6402 x 200 is marked from the runway to a point labeled 28. A distance of 10 is marked from the runway to a point labeled 1R. A distance of 76 is marked from the runway to a point labeled A5. A distance of 191 is marked from the runway to a point labeled A1. A distance of 10 is marked from the runway to a point labeled 28. A distance of 8000 x 200 is marked from the runway to a point labeled 161. A distance of 8003 x 200 is marked from the runway to a point labeled 1L. A distance of 6402 x 200 is marked from the runway to a point labeled 28. A distance of 10 is marked from the runway to a point labeled 1R. A distance of 76 is marked from the runway to a point labeled A5. A distance of 191 is marked from the runway to a point labeled A1. A distance of 10 is marked from the runway to a point labeled 28. A distance of 8000 x 200 is marked from the runway to a point labeled 161. A distance of 8003 x 200 is marked from the runway to a point labeled 1L. A distance of 6402 x 200 is marked from the runway to a point labeled 28. A distance of 10 is marked from the runway to a point labeled 1R. A distance of 76 is marked from the runway to a point labeled A5. A distance of 191 is marked from the runway to a point labeled A1. A distance of 10 is marked from the runway to a point labeled 28. A distance of 8000 x 200 is marked from the runway to a point labeled 161. A distance of 8003 x 200 is marked from the runway to a point labeled 1L. A distance of 6402 x 200 is marked from the runway to a point labeled 28. A distance of 10 is marked from the runway to a point labeled 1R. A distance of 76 is marked from the runway to a point labeled A5. A distance of 191 is marked from the runway to a point labeled A1. A distance of 10 is marked from the runway to a point labeled 28. A distance of 8000 x 200 is marked from the runway to a point labeled 161. A distance of 8003 x 200 is marked from the runway to a point labeled 1L. A distance of 6402 x 200 is marked from the runway to a point labeled 28. A distance of 10 is marked from the runway to a point labeled 1R. A distance of 76 is marked from the runway to a point labeled A5. A distance of 191 is marked from the runway to a point labeled A1. A distance of 10 is marked from the runway to a point labeled 28. A distance

MERIDIAN, MISSISSIPPI

32°33'N-88°33'W

MERIDIAN NAS (MC CAIN FIELD) (KNMM)

ILS Y or LOC/DME Y RWY 19L