

ILS W or LOC/DME W RWY 19L

LOC/DME I-NMM 109.7 Chan 34	APCH CRS 191°	Rwy Idg 8000 TDZE 316 Arpt Elev 316
---	-------------------------	--

AL-5079 [USN]

MERIDIAN NAS (MC CAIN FIELD) (KNMM)

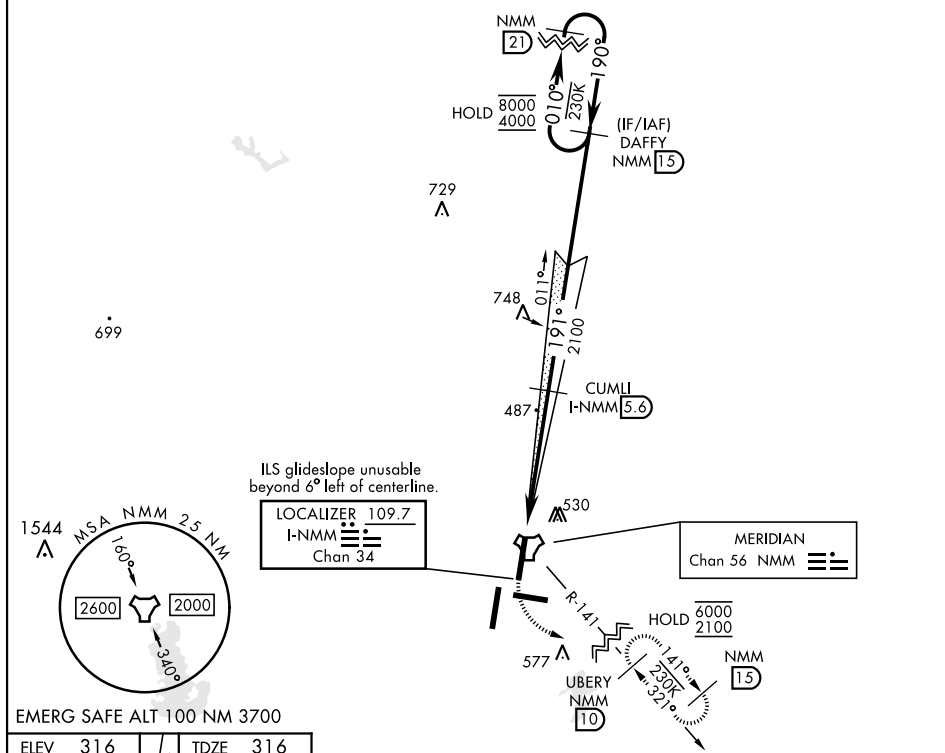
RADAR required

T * When ALS inop, increase vis to $\frac{3}{4}$ mile.
** When ALS inop, increase CAT AB vis to 1 mile,
CAT CD vis to $1\frac{1}{4}$ miles.

MALSR
A5

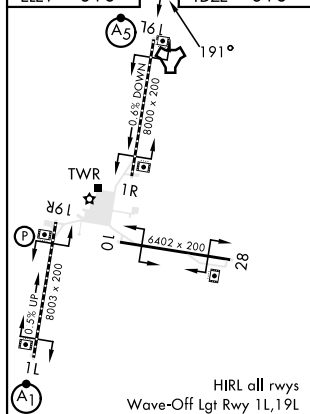
MISSED APPROACH: Climb to 800, then climbing left turn to 2100 to intercept NMM R-141 to UBERY and hold.

ATIS ★ 290.525	APP CON 120.95 276.4	NAVY MC CAIN TOWER ★ 126.2 340.2	GND CON 336.4	CLNC DEL 301.0	ASR/PAR
-------------------	-------------------------	-------------------------------------	------------------	-------------------	---------



EMERG SAFE ALT 100 NM 3700

FILEV	316	/	TDZE	316
-------	-----	---	------	-----



CATEGORY	A	B	C	D
S-ILS 19L *	516-½		200	(200-½)
S-LOC 19L **	740-½	424 (500-½)	740-¾	424 (500-¾)
CIRCLING	820-1 504 (600-1)	840-1 524 (600-1)	840-1½ 524 (600-1½)	880-2 564 (600-2)

MERIDIAN, MISSISSIPPI

32°33'N-88°33'W

MERIDIAN NAS (MC CAIN FIELD) (KNMM)

ILS W or LOC/DME W RWY 19L

Orig 01DEC22

SC-4, 07 AUG 2025 to 04 SEP 2025