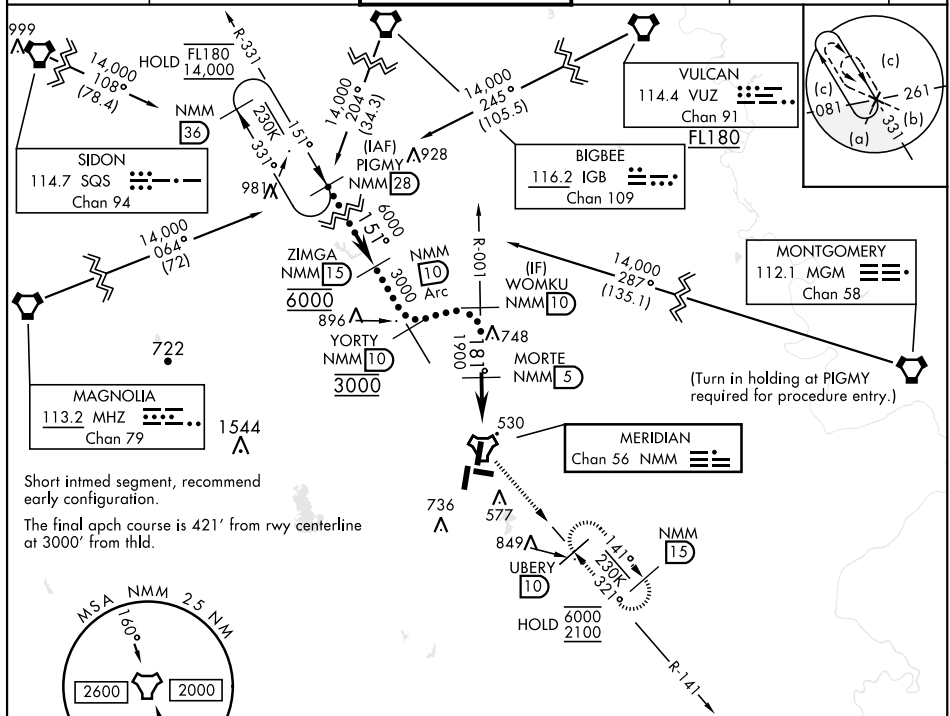


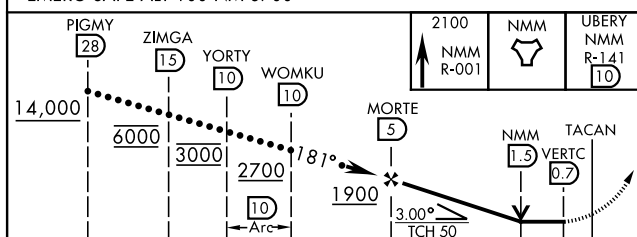
HI-TACAN Z RWY 19L

TACAN NMM Chan 56	APCH CRS 181°	Rwy Idg 8000 TDZE 316 Arpt Elev 316	AL-5079 [USN]	MERIDIAN NAS (MC CAIN FIELD) (KNMM)
DME required.			MALSR 	MISSED APPROACH: Climb to 2100 via NMM R-001 to TACAN then via R-141 to UBERY and hold.
* When ALS inop, increase vis to 1 1/2 miles.				

ATIS ★ 290.525	APP CON 120.95 276.4	NAVY MC CAIN TOWER ★ 126.2 340.2	GND CON 336.4	CLNC DEL 301.0	ASR/ PAR
-------------------	-------------------------	-------------------------------------	------------------	-------------------	-------------



EMERG SAFE ALT 100 NM 3700



			4.3 NM		0.5
CATEGORY	C	D	E		
S-19L *	780-1		464	(500-1)	
CIRCLING	840-1½ 524 (600-1½)	880-2 564 (600-2)	1080-2¾ 764 (800-2¾)		

