

HI-ILS Z or LOC/DME Z RWY 19L

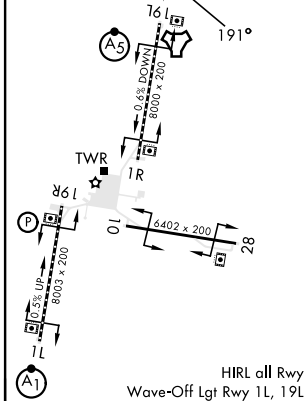
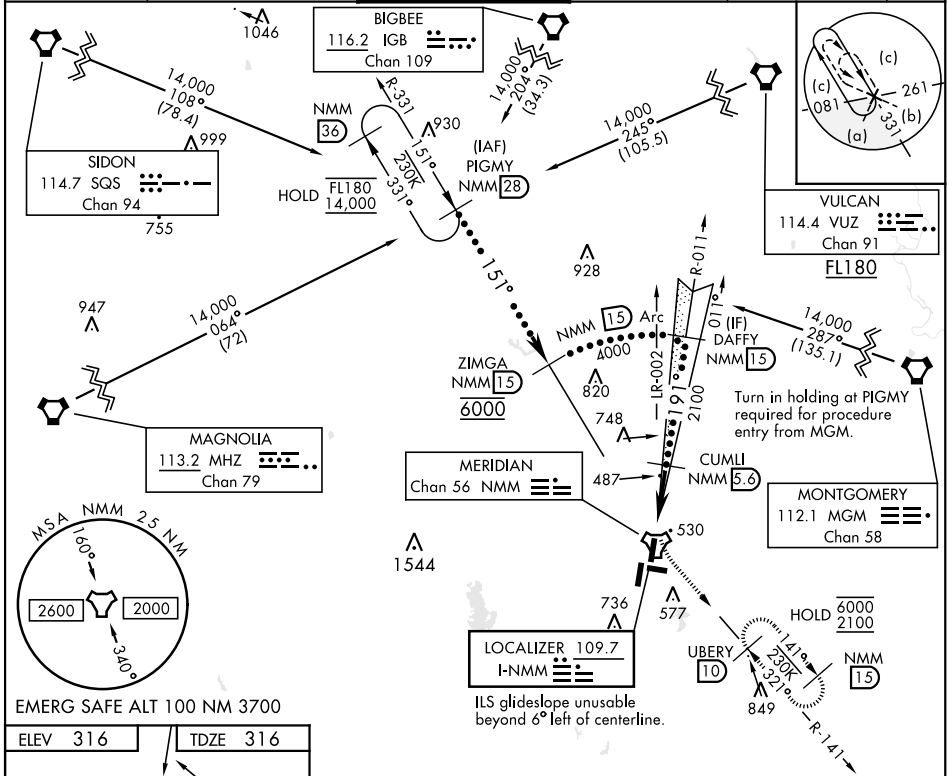
LOC I-NMM 109.7	APCH CRS 191°	Rwy Idg TDZE Arpt Elev 8000 316 316
---------------------------	-------------------------	---

AL-5079 [USN]

MERIDIAN NAS (MC CAIN FIELD) (KNMM)

<p>⚠ *When ALS inop, increase vis to $\frac{3}{4}$ mile. **When ALS inop, increase vis to $1\frac{1}{4}$ miles.</p>	<p>MALSR (A5)</p>	<p>MISSED APPROACH: Climb to 800 then climbing left turn to 2100 intercept NMM R-141 to UBERY and hold.</p>
--	------------------------------	---

ATIS ★ 290.525	APP CON 120.95 276.4	NAVY MC CAIN TOWER ★ 126.2 340.2	GND CON 336.4	CLNC DEL 301.0	ASR/ PAR
--------------------------	--------------------------------	--	-------------------------	--------------------------	-------------



800	2100	UBERY	PIGMY
NMM R-141	NMM 10	NMM 15	NMM 28
TACAN	NMM 1.3	DAFFY	ZIMGA
FAXAR	NMM 0.7	CUMLI	NMM 5.6
0.5	4.9 NM	2100	14,000
CATEGORY	C	D	E
S-ILS 19L *	516- $\frac{1}{2}$	200	(200- $\frac{1}{2}$)
S-LOC 19L **	740- $\frac{3}{4}$	424	(500- $\frac{3}{4}$)
CIRCLING	840-1 $\frac{1}{2}$ 524 (600-1 $\frac{1}{2}$)	880-2 564 (600-2)	1080-2 $\frac{3}{4}$ 764 (800-2 $\frac{3}{4}$)

MERIDIAN, MISSISSIPPI

32° 33' N - 88° 33' W

MERIDIAN NAS (MC CAIN FIELD) (KNMM)

Orig 03NOV22

HI-ILS Z or LOC/DME Z RWY 19L