

APP CRS
283°

Rwy Ldg
5849

TDZE
906

Apt Elev
912

RNAV (GPS) RWY 28

WAUKESHA COUNTY (U/S)

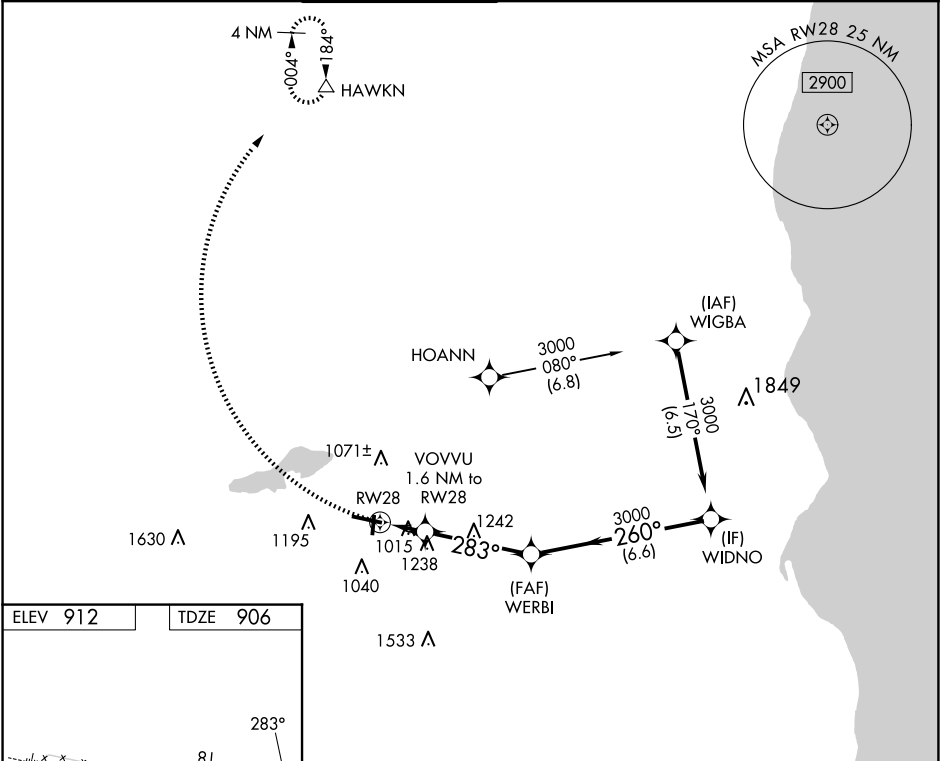
RNP APCH - GPS.

⚠

Rwy 28 helicopter visibility reduction below 1 SM NA. When local altimeter setting not received, use MWC altimeter setting and increase all MDAs 60 feet and LNAV visibility Cats C and D ¼ SM, and Circling visibility Cats C and D ¼ SM.

MISSED APPROACH: Climbing right turn to 3000 direct HAWKN and hold.

ATIS 118.875	MILWAUKEE APP CON 125.35 307.0	WAUKESHA TOWER ★ 123.7 (CTAF) 0	GND CON 121.6	CLNC DEL 121.6	CLNC DEL 128.7 (When twr closed)	UNICOM 122.95
-----------------	-----------------------------------	------------------------------------	------------------	-------------------	--	------------------



ELEV 912 TDZE 906

HIRL Rwy 10-28 0
MIRL Rwy 18-36 0
REIL Rwy 28 0
REIL Rwy 18 and 36

3000 HAWKN

VGSI and descent angles not coincident (VGSI Angle 3.75/TCH 37).

VOVVU 1.6 NM to RW28

WERBI

WIDNO

3000

260°

3000

1.6 NM

3.9 NM

6.6 NM

CATEGORY	A	B	C	D
LNAV MDA	1500-1 594 (600-1)		1500-1¾ 594 (600-1¾)	
CIRCLING	1500-1 588 (600-1)		1540-1¾ 628 (700-1¾)	1640-2¼ 728 (800-2¼)

EC-3, 07 AUG 2025 to 04 SEP 2025

EC-3, 07 AUG 2025 to 04 SEP 2025