

WAAS CH 53411 W10A	APP CRS 103°	Rwy Idg TDZE Apt Elev 911
--	------------------------	--

RNAV (GPS) RWY 10

WAUKESHA COUNTY (UES)

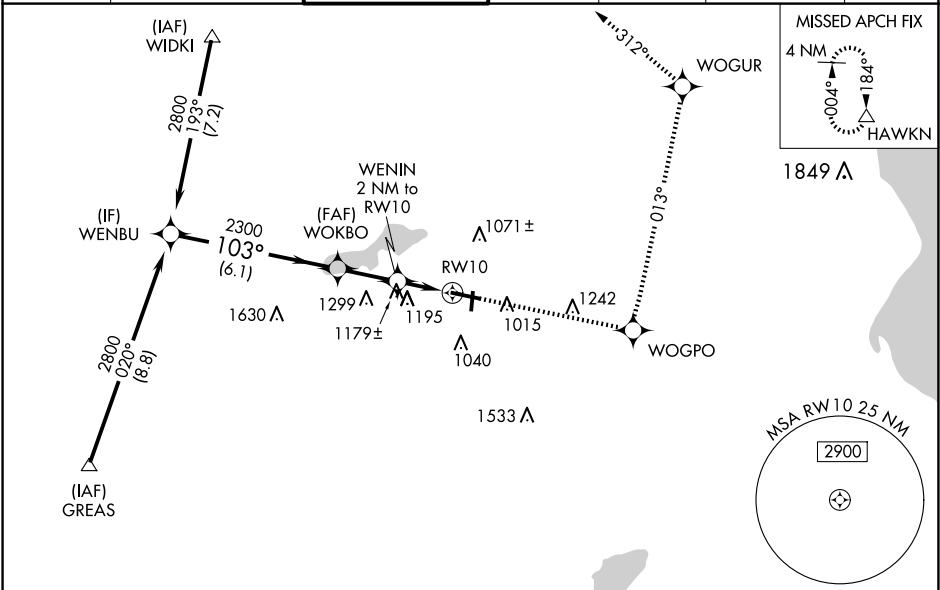
⚠

Baro-VNAV NA when using Lawrence J Timmerman altimeter setting. For uncompensated Baro-VNAV systems, LNAV/VNAV NA below -16°C (4°F) or above 54°C (130°F). DME/DME RNP-0.3 NA. When local altimeter setting not received, use Lawrence J Timmerman altimeter setting: increase LPV DA to 1147 feet, LNAV/VNAV DA to 1583 feet and all Cats visibility ¼ SM; increase all MDAs 60 feet and Circling Cat C and D visibility ¼ SM.

MALSR

MISSED APPROACH: Climb to 3000 direct WOGPO and left turn on track 013° to WOGUR and track 312° to HAWKN and hold.

ATIS 118.875	MILWAUKEE APP CON 125.35 307.0	WAUKESHA TOWER ★ 123.7 (CTAF) 0	GND CON 121.6	CLNC DEL 121.6	CLNC DEL 128.7 (When twr closed)	UNICOM 122.95
------------------------	--	--	-------------------------	--------------------------	---	-------------------------



Procedure NA for arrivals at GREAS via V63 southwest bound.

Procedure Turn NA	3000	WOGPO	tr 013°	WOGUR	tr 312°	HAWKN
WENBU	2800	WOKBO	WENIN 2 NM to RW10	RW10	*LNAV only	
GP 3.00° TCH 53	2800	2300	*1580			
	6.1 NM	2.2 NM	2 NM			
CATEGORY	A	B	C	D		
LPV DA		1101-½	200 (200-½)			
LNAV/VNAV DA		1537-1¾	636 (700-1¾)			
LNAV MDA	1440-½	539 (600-½)	1440-1 539 (600-1)	1440-1¼ 539 (600-1¼)		
CIRCLING	1460-1 549 (600-1)	1500-1 589 (600-1)	1540-1¾ 629 (700-1¾)	1640-2¼ 729 (800-2¼)		

ELEV 911

TDZE 901

Diagram illustrating the final approach segment of the RNAV (GPS) RWY 10 procedure. Key waypoints and altitudes include: WOGPO (1242), WOGUR (1215), and HAWKN (1849). Distances are marked in NM (e.g., 0.1 NM, 0.1 NM, 0.1 NM). A diagram of the runway and taxiway layout is shown, including the runway (RWY 10-28), taxiway (TWY 28), and runway (RWY 18-36).