

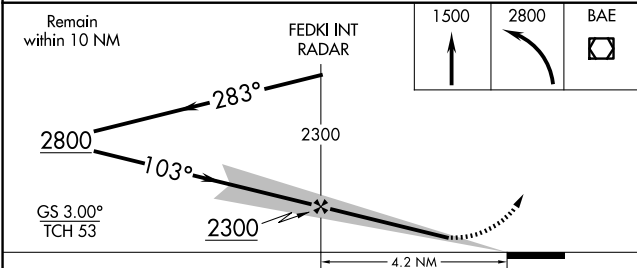
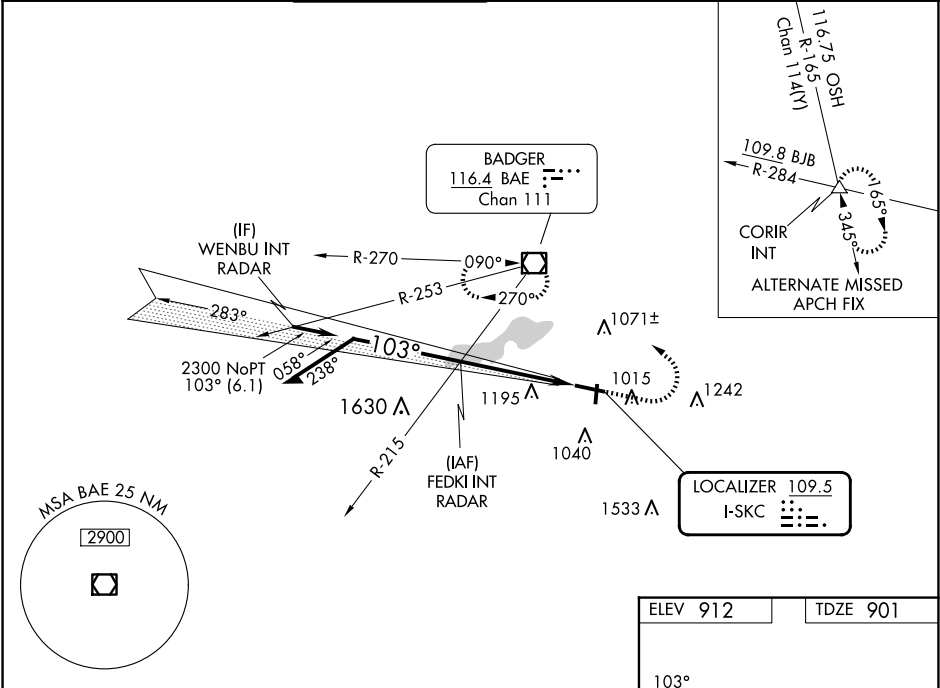


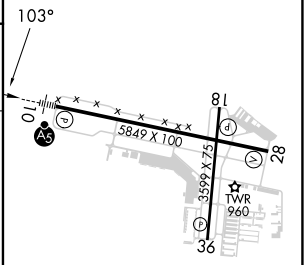



LOC I-SKC 109.5	APP CRS 103°	Rwy Ldg TDZE Apt Elev	5849 901 912
---------------------------	------------------------	-----------------------------	---

ILS or LOC RWY 10

WAUKESHA COUNTY (U/S)

RADAR required for procedure entry.				MALSR 		MISSED APPROACH: Climb to 1500 then climbing left turn to 2800 direct BAE VOR/DME and hold, continue climb-in-hold to 2800.	
For inop ALS, increase S-LOC 10 visibility to 1½ SM. When local altimeter setting not received, use MWC altimeter setting and increase S-ILS 10 DA to 1149 feet; increase all MDAs 60 feet and S-LOC 10 visibility Cats C and D ½ SM, and Circling visibility Cats C and D ¼ SM.							
ATIS 118.875	MILWAUKEE APP CON 125.35 307.0	WAUKESHA TOWER ★ 123.7 (CTAF) 	GND CON 121.6	CLNC DEL 121.6	CLNC DEL 128.7 (When twr closed)	UNICOM 122.95	



ELEV 912	TDZE 901
	
HIRL Rwy 10-28 	
MIRL Rwy 18-36 	
REIL Rwy 28 	
REIL Rwy 18 and 36	
FAF to MAP 4.2 NM	
Knots	60 90 120 150 180
Min:Sec	4:12 2:48 2:06 1:41 1:24