

CLEAN, NEW YORK

AL-5072 (FAA)

23222

WAAS CH 53401 W04A	APP CRS 043°	Rwy Idg 4500 TDZE 2132 Apt Elev 2135
--	------------------------	---

APP CRS
043°

Rwy Idg	4500
TDZE	2132
Apt Elev	2135

RNAV (GPS) RWY 4

CATTARAUGUS COUNTY-OLEAN (OLE)

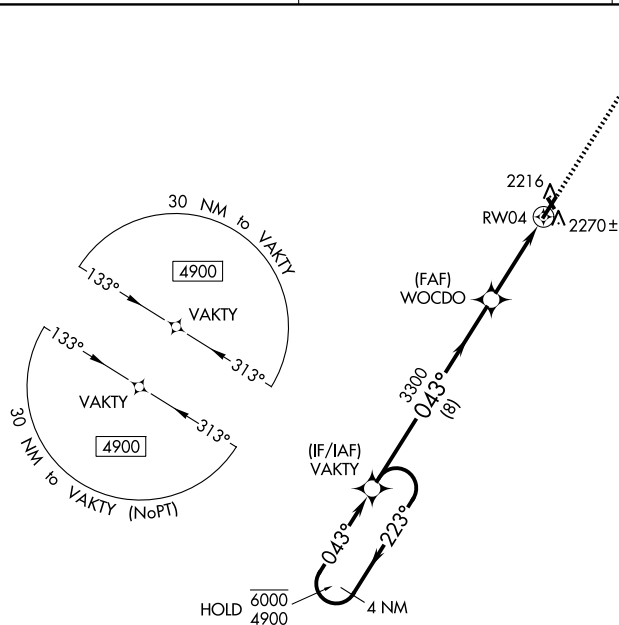
RNP APCH-GPS.

T Circling NA to Rwy 16 and 34. Rwy 4 helicopter visibility reduction below $\frac{3}{4}$ SM NA. When VGSI inop, Circling Rwy 22 NA at night. For uncompensated Baro-VNAV systems, LNAV/VNAV NA below -19°C or above 54°C.

MISSED APPROACH: Climb to 4500 direct UGASE and hold.

AWOS-3
118.375

CLEVELAND CENTER
124.325 353.85

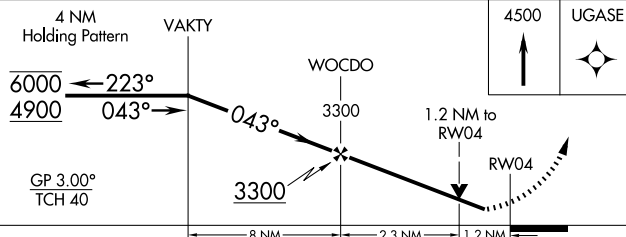
UNICOM
122.8 (CTAF) **L**

MISSED APCH FIX

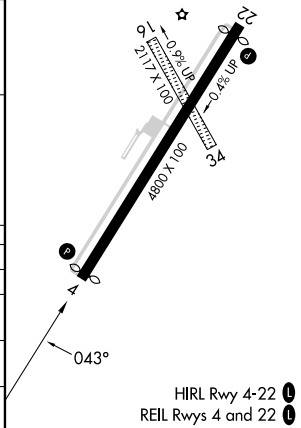


2709
A

ELEV 2135	D	TDZE 2132
-----------	----------	-----------



CATEGORY		A	B	C	D
LPV	DA	2382-3 $\frac{3}{4}$		250 (300-3 $\frac{3}{4}$)	
LNAV/ VNAV	DA	2549-1 $\frac{1}{8}$		417 (500-1 $\frac{1}{8}$)	
LNAV	MDA	2560-1	428 (500-1)	2560-1 $\frac{1}{4}$	428 (500-1 $\frac{1}{4}$)
C CIRCLING		2620-1	485 (500-1)	2680-1 $\frac{1}{2}$ 545 (600-1 $\frac{1}{2}$)	2720-2 585 (600-2)



OLEAN, NEW YORK
Amdt 2B 10AUG23

42°14'N - 78°22'W

CATTARAUGUS COUNTY-OLEAN (OLE) RNAV (GPS) RWY 4

NE-2, 07 AUG 2025 to 04 SEP 2025