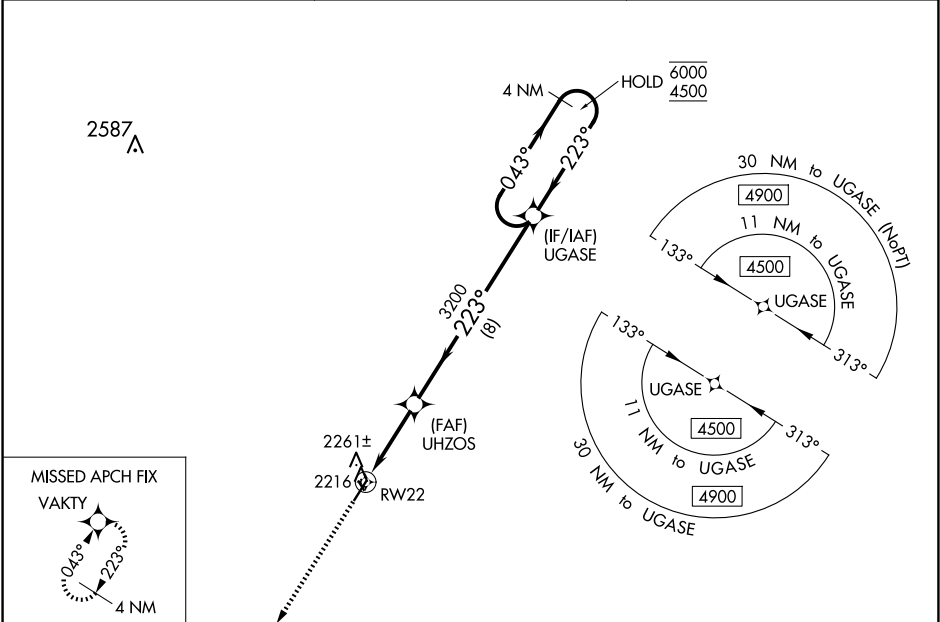


WAAS CH 99401 W22A	APP CRS 223°	Rwy Idg TDZE Apt Elev	4500 2132 2135
--	------------------------	-----------------------------	---

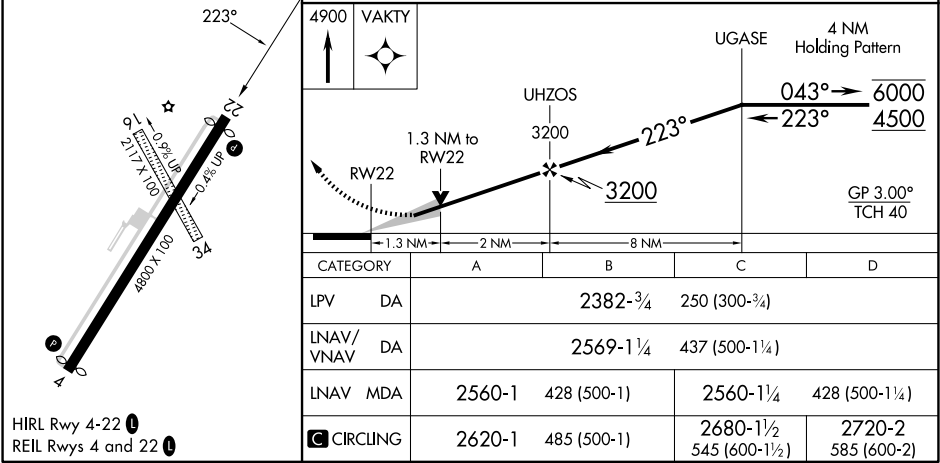
RNAV (GPS) RWY 22

CATTARAUGUS COUNTY-OLEAN (OLE)

RNP APCH-GPS. <div><div></div><div>Circling NA to Rwys 16 and 34. For uncompensated Baro-VNAV systems, LNAV/VNAV NA below -19°C or above 54°C. When VGSI inop, Straight-in/Circling Rwy 22 procedure NA at night.</div></div>		MISSED APPROACH: Climb to 4900 direct VAKTY and hold.
AWOS-3 118.375	CLEVELAND CENTER 124.325 353.85	UNICOM 122.8 (CTAF) 0



ELEV 2135	D	TDZE 2132
-----------	----------	-----------



HIRL Rwy 4-22 0	REIL Rwys 4 and 22 0
-----------------	----------------------