

TACAN RWY 12

TACAN	MJ	APCH CRS	Rwy ldg
Chan	79	117°	TDZE 10,000
			Arpt Elev 4351

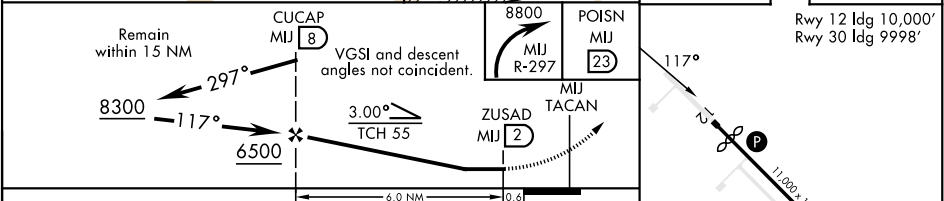
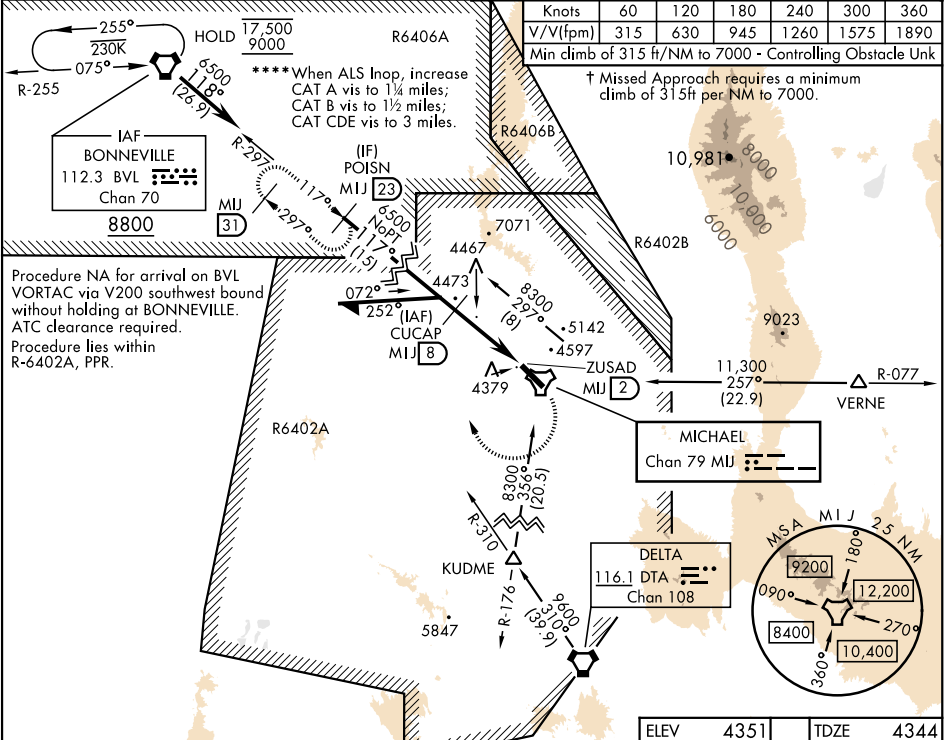
[USA]

MICHAEL AAF (KDPG)

▼ \*When ALS Inop, increase CAT CDE vis to 1¾ miles.  
\*\*When ALS Inop, increase CAT B vis to 1¼ miles;  
CAT CDE vis to 2½ miles.  
\*\*\*When ALS Inop, increase CAT CDE vis to 1¾ miles.

MISSED APPROACH: Climbing right turn to 8800  
via MJ TACAN R-297 to POISN/MJ 23 DME and hold.

CLOVER CON	CTAF
134.1 363.5	0 126.2 270.3



CATEGORY	A	B	C	D	E
S-12*†	4800-1		456		(500-1)
S-12**	5160-1 809 (900-1)	816 809 (900-1¼)	5160-2 809 (900-2½)	816 1529 (1600-3)	(900-2) 1769 (1800-3)
✶ CIRCLING	5160-1 809 (900-1)	5160-1¼ 809 (900-1¼)	5160-2½ 809 (900-2½)	5880-3 1529 (1600-3)	6120-3 1769 (1800-3)
KENV - ENV (WENDOVER) ALTIMETER SETTING MINIMUMS					
S-12***†	4960-1	616 (700-1)	4960-1½	616	(700-1½)
S-12****	5320-1 976 (1000-1)	5320-1¼ 976 (1000-1¼)	5320-2½	976	(1000-2½)
✶ CIRCLING	5320-1¼ 969 (1000-1¼)	5320-1½ 969 (1000-1½)	5320-3 969 (1000-3)	6040-3 1689 (1700-3)	6280-3 1929 (2000-3)

TACAN RWY 12

SW-4, 07 AUG 2025 to 04 SEP 2025

SW-4, 07 AUG 2025 to 04 SEP 2025