

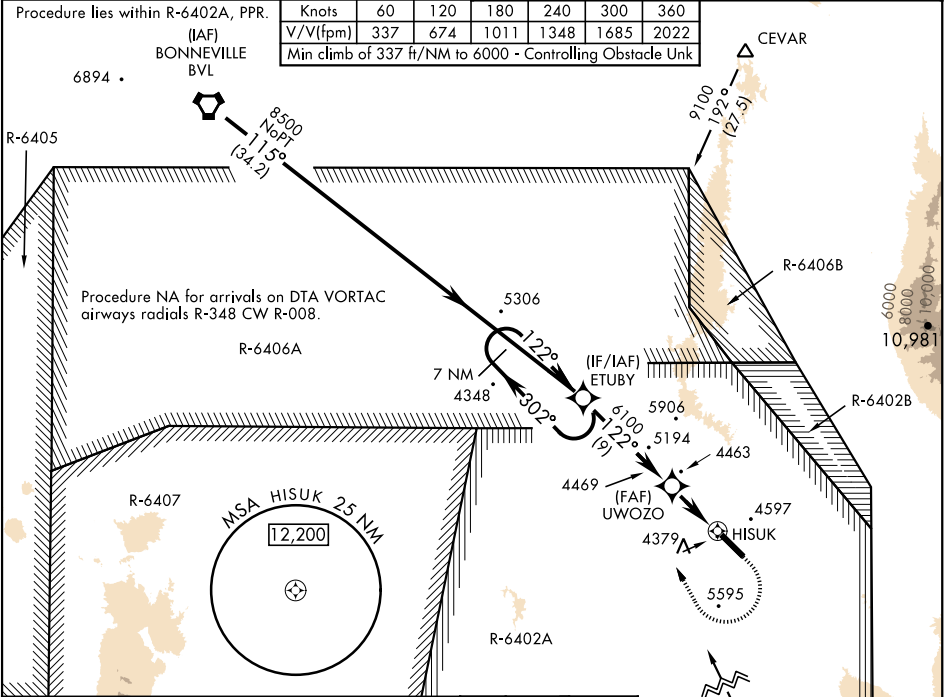
APCH CRS	Rwy ldg
122°	10,000
	TDZE
	4344
	Arprt Elev
	4351

[USA]

MICHAEL AAF (KDPG)

<p>NA</p> <p>* Obtain local altimeter setting on CTAF; when not received, use Wendover altimeter setting. DME/DME RNP-0.3 NA.</p>	<p>MISSED APPROACH: Climb to 4760 then climbing right turn to 8500 direct ETUBY and hold, continue climb in hold to 8500.</p>
---	---

<p>CLOVER CON</p> <p>134.1 363.5</p>	<p>CTAF</p> <p>126.2 270.3</p>
--------------------------------------	--------------------------------



	7 NM Holding Pattern		VDP NA with Wendover altimeter setting minimums. VGSI and descent angles not coincident		
	ETUBY		UWOZO		HISUK
	8500		6100		
	302°		122°		4.6 NM
	122°		122°		0.8
	3.00°		TCH 55		
CATEGORY	A	B	C	D	E
RNAV MDA	4640-1	294 (300-1)	5140-2½	794 (800-2½)	
CIRCLING	4800-1	4920-1	5160-2½	5880-3	NA
	449 (500-1)	569 (600-1)	809 (900-2½)	1529 (1600-3)	
BELOW MINIMA REQUIRES MISSED APPROACH CLIMB GRADIENT OF 337 ft/NM					
RNAV MDA	NA	4640-1	294	(300-1)	
* WENDOVER ALTIMETER SETTING MINIMUMS					
RNAV MDA	4800-1	454 (500-1)	5300-3	954 (1000-3)	
CIRCLING	4960-1	5080-1	5320-3	6040-3	NA
	609 (700-1)	729 (800-1)	969 (1000-3)	1689 (1700-3)	
BELOW MINIMA REQUIRES MISSED APPROACH CLIMB GRADIENT OF 337 ft/NM					
RNAV MDA	NA	4800-3	454	(500-3)	

SW-4, 07 AUG 2025 to 04 SEP 2025

SW-4, 07 AUG 2025 to 04 SEP 2025