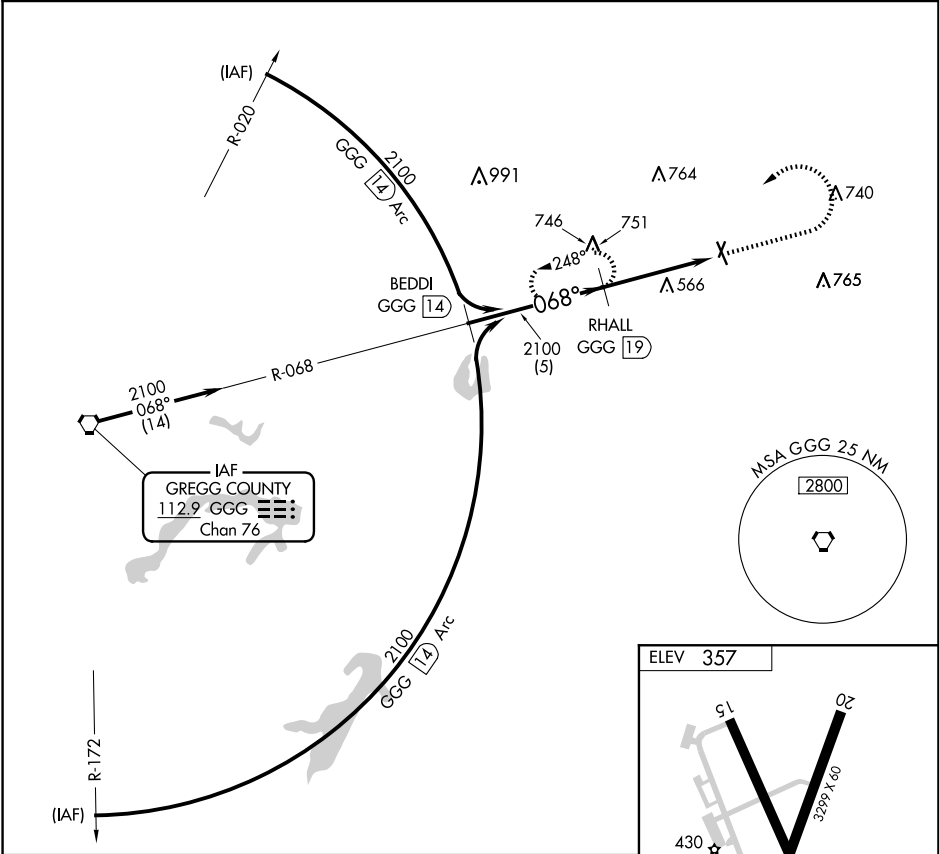


VORTAC GGG 112.9 Chan 76	APP CRS 068°	Rwy Idg TDZE Apt Elev	N/A N/A 357
--	------------------------	-----------------------------	--

VOR/DME-A
HARRISON COUNTY (ASL)

<p>⚠ When local altimeter setting not received, use Longview altimeter setting and increase all MDA 60 feet; increase Cat B visibility to 1½. Night Landing: Rwy 2, 15, 20 NA. Helicopter visibility reduction below 1 SM NA.</p>	<p>MISSED APPROACH: Climb to 2100 then left turn via GGG R-068 to RHALL/GGG 19 DME and hold.</p>
---	--

AWOS-3PT 118.675	SHREVEPORT APP CON 119.9 335.55	UNICOM 122.8 (CTAF) 0
----------------------------	---	--



BEDDI GGG 14		RHALL GGG 19		2100	GGG 23.3
2100		068°		2100	
Procedure Turn NA					
5 NM		4.3 NM			
CATEGORY	A	B	C	D	
CIRCLING	1300-1¼	943 (1000-1¼)	NA		

ELEV 357

REIL Rwy 15 and 33 **0**
MIRL Rwy 15-33 **0**