
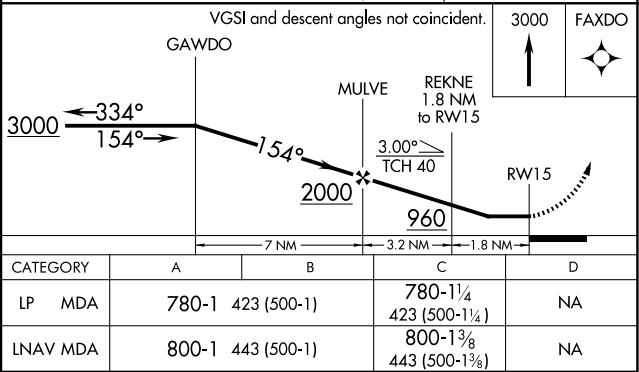
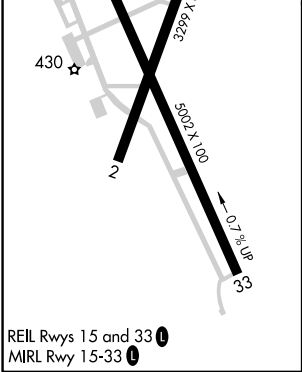
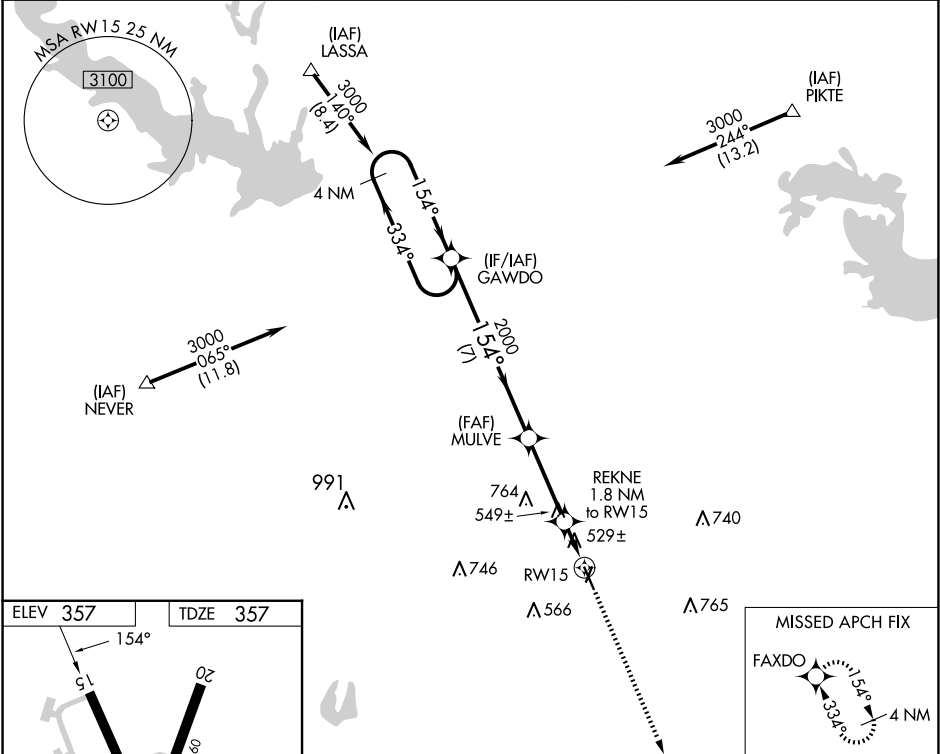


WAAS CH 90426 W15A	APP CRS 154°	Rwy Idg TDZE Apt Elev	5002 357 357
--	------------------------	-----------------------------	---

RNAV (GPS) RWY 15

HARRISON COUNTY (ASL)

RNP APCH.		MISSED APPROACH: Climb to 3000 direct FAXDO and hold.
 NA	Rwy 15 helicopter visibility reduction below 1 SM NA. When local altimeter setting not received, use Longview altimeter setting and increase all MDA 60 feet; increase LP Cat C visibility 1/8 mile. Procedure NA at night.	
AWOS-3PT 118.675	SHREVEPORT APP CON 119.9 335.55	UNICOM 122.8 (CTAF) 0



SC-2, 07 AUG 2025 to 04 SEP 2025

SC-2, 07 AUG 2025 to 04 SEP 2025