

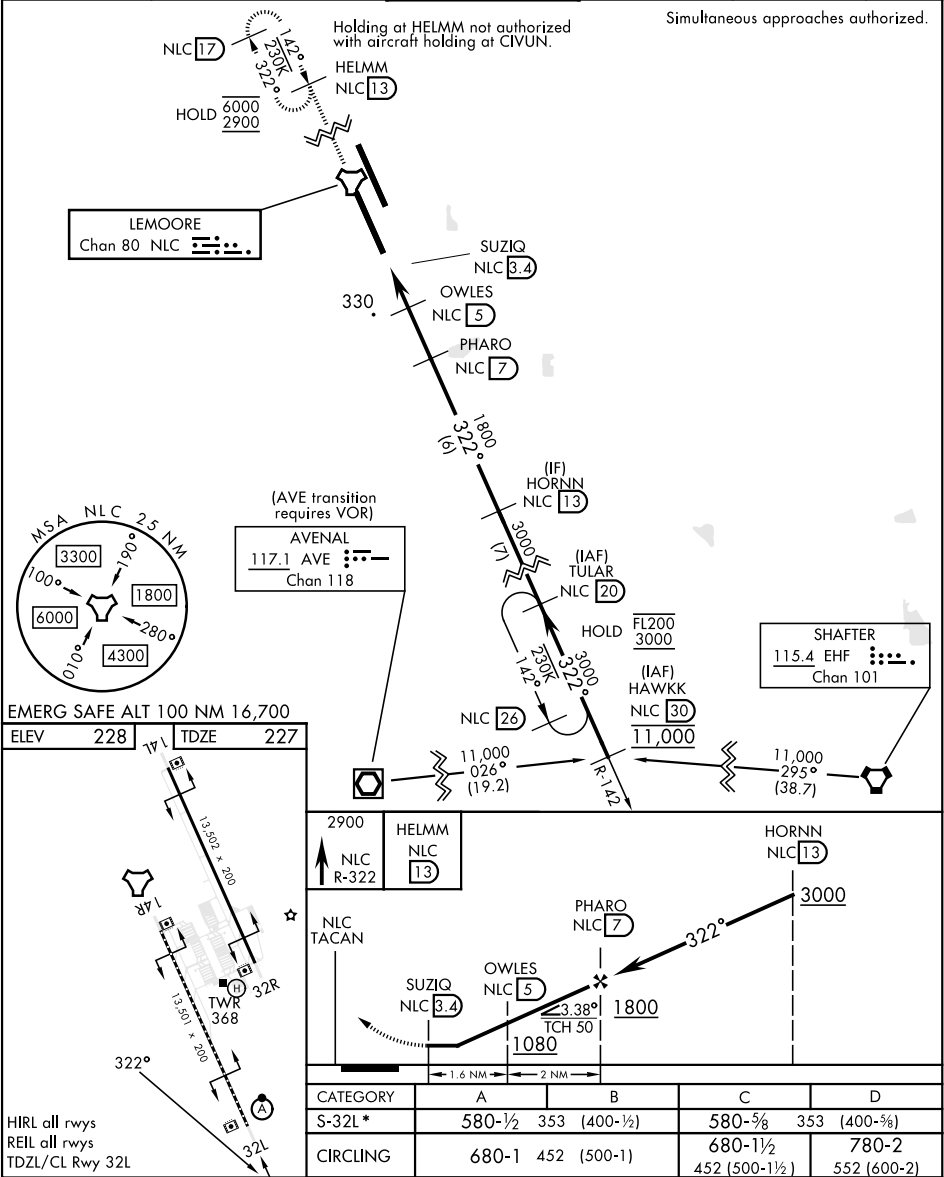
TACAN Y RWY 32L

TACAN NLC	APCH CRS	Rwy Idg
Chan 80	322°	13,501
	TDZE	227
	Arprt Elev	228

[USN]

LEMOORE NAS (REEVES FIELD) (KNLC)

* When ALS inop, increase vis to 1 mile.		ALS F-2	MISSED APPROACH: Climb to 2900 via NLC R-322 to HELMM and hold.		
ATIS ★	APP CON	TOWER ★	GND CON	CLNC DEL	ASR/PAR
121.575 327.15	124.1 269.025 (N) 118.15 269.025 (S)	128.3 340.2	121.65 305.2	124.1 371.9	



TACAN Y RWY 32L

SW-2, 07 AUG 2025 to 04 SEP 2025

SW-2, 07 AUG 2025 to 04 SEP 2025