

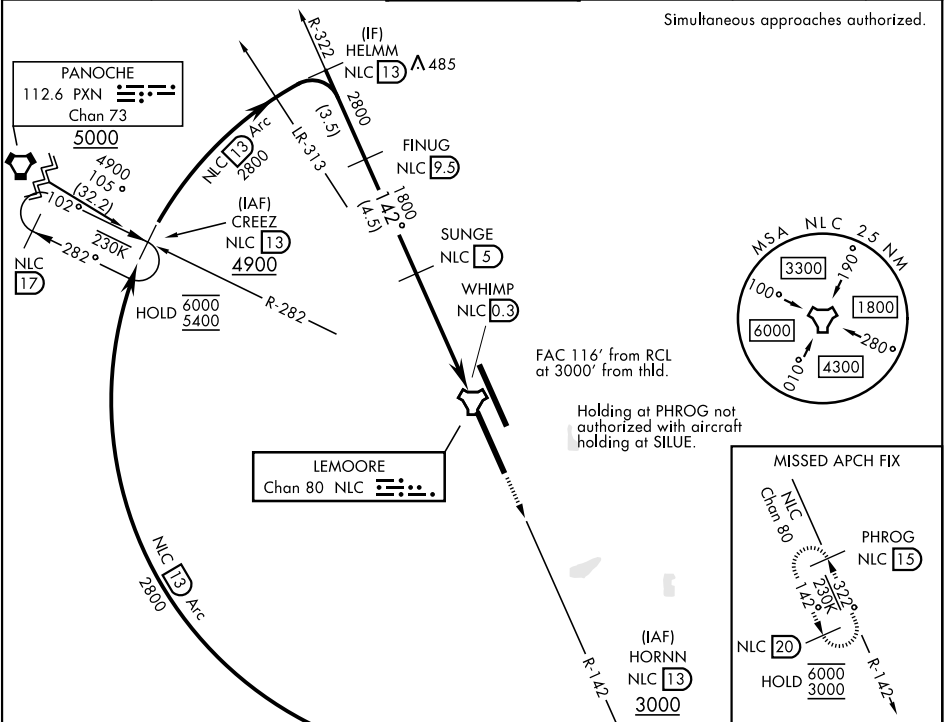
TACAN Y RWY 14R

TACAN Chan 80	NLC 142°	APCH CRS Rwy Idg 13,501 TDZE 228 Arprt Elev 228
------------------	-------------	--

[USN]

LEMOORE NAS (REEVES FIELD) (KNLC)

ATIS★ 121.575 327.15			APP CON 124.1 269.025 (N) 118.15 269.025 (S)		TOWER★ 128.3 360.2		GND CON 121.65 305.2		CLNC DEL 124.1 371.9		ASR/PAR
-------------------------	--	--	--	--	-----------------------	--	-------------------------	--	-------------------------	--	---------



EMERG SAFE ALT 100 NM 16,700					ELEV 228		TDZE 228	
<div><div>HELMM NLC 13</div><div>FINUG NLC 9.5</div><div>SUNGE NLC 5</div><div>WHIMP NLC 0.3</div><div>TACAN</div></div>					<div>3000 NLC R-142</div> <div>PHROG NLC 15</div>		<div>142°</div> <div>13.502 x 200</div> <div>13.501 x 200</div> <div>32R</div> <div>32L</div> <div>32L</div>	
<div><div>2800</div><div>2800</div><div>1800</div><div>2.60°</div><div>TCH 50</div><div>4.7 NM</div></div>								
CATEGORY	A		B		C		D	
S-14R	680-1	452	(500-1)		680-1 3/8	452	(500-1 3/8)	
CIRCLING	680-1	452	(500-1)		680-1 1/2	780-2		
					452 (500-1 1/2)	552 (600-2)		
					HIRL all rwys		REIL all rwys	
					TDZL/CL Rwy 32L			

TACAN Y RWY 14R

SW-2, 07 AUG 2025 to 04 SEP 2025

SW-2, 07 AUG 2025 to 04 SEP 2025